

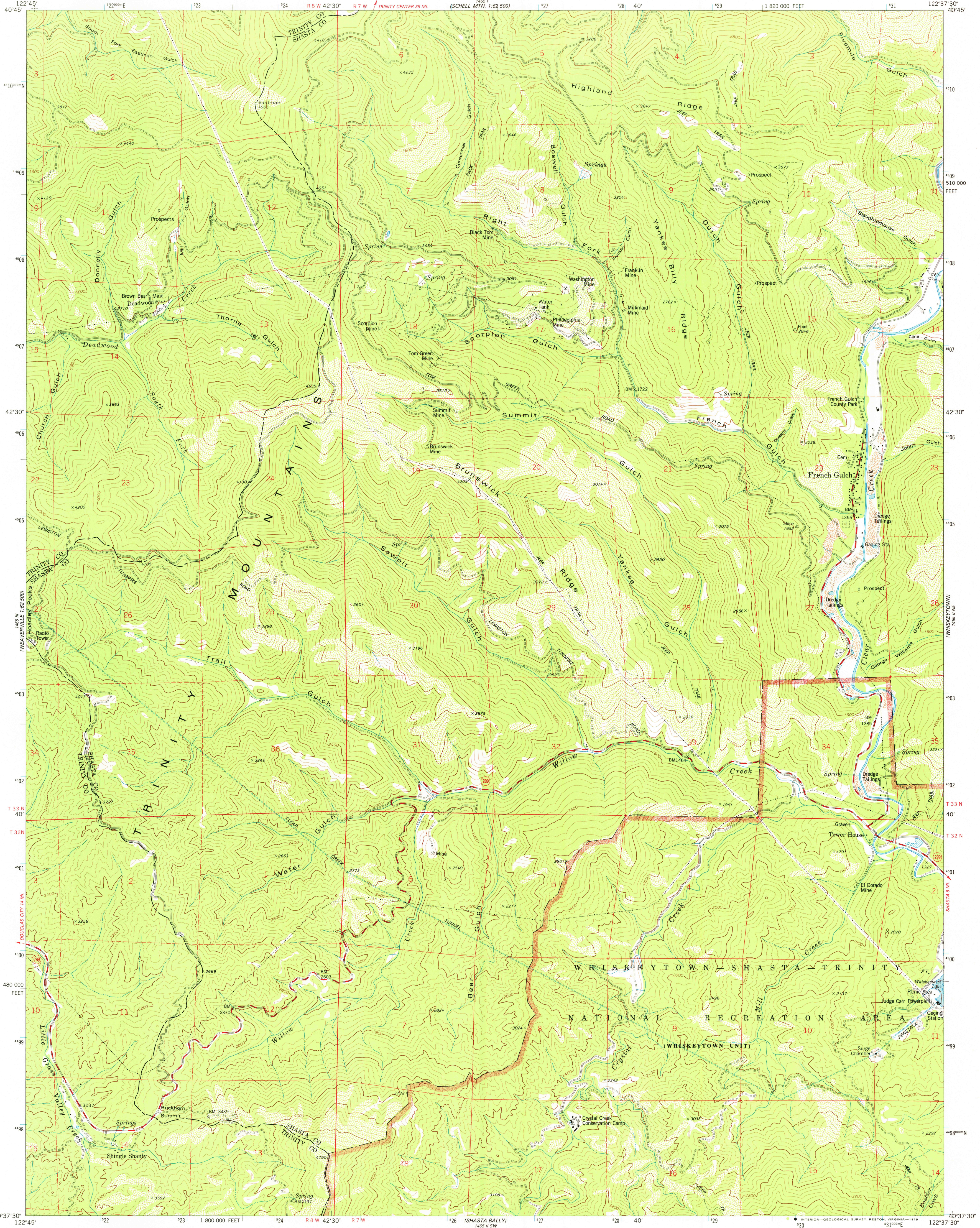
1:62,500  
1:62,500  
1:62,500

UNITED STATES  
DEPARTMENT OF THE INTERIOR  
GEOLOGICAL SURVEY

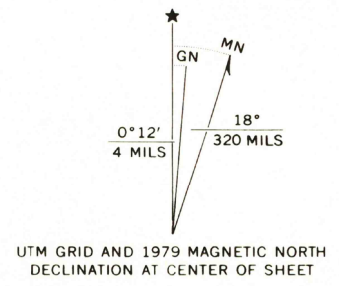


FRENCH GULCH QUADRANGLE  
CALIFORNIA  
7.5 MINUTE SERIES (TOPOGRAPHIC)  
NW 1/4 FRENCH GULCH 15' QUADRANGLE

1:62,500  
1:62,500  
1:62,500



Mapped, edited, and published by the Geological Survey  
Control by USGS and NOS/NOAA  
Topography by photogrammetric methods from aerial photographs taken 1973. Field checked 1974  
Map edited 1979  
Projection and 10,000-foot grid ticks: California coordinate system, zone 1 (Lambert conformal conic)  
1000-meter Universal Transverse Mercator grid ticks, zone 10, shown in blue. 1927 North American datum  
To place on the predicted North American Datum 1983, move the projection lines 18 meters north and 94 meters east as shown by dashed corner ticks  
There may be private inholdings within the boundaries of the National or State reservations shown on this map



SCALE 1:24,000  
CONTOUR INTERVAL 80 FEET  
NATIONAL GEODETIC VERTICAL DATUM OF 1929  
THIS MAP COMPLIES WITH NATIONAL MAP ACCURACY STANDARDS  
FOR SALE BY U.S. GEOLOGICAL SURVEY, DENVER, COLORADO 80225, OR RESTON, VIRGINIA 22092  
A FOLDER DESCRIBING TOPOGRAPHIC MAPS AND SYMBOLS IS AVAILABLE ON REQUEST

ROAD CLASSIFICATION  
Primary highway, hard surface  
Secondary highway, hard surface  
Interstate Route  
U.S. Route  
State Route  
Light-duty road, hard or improved surface  
Unimproved road  
Interior-Geological Survey, Reston, Virginia—1979  
FRENCH GULCH, CALIF.  
NW 1/4 FRENCH GULCH 15' QUADRANGLE  
N4037.5—W12237.5/7.5  
1979  
DMA 1465 II NW—SERIES V895

OCT 10 1979