

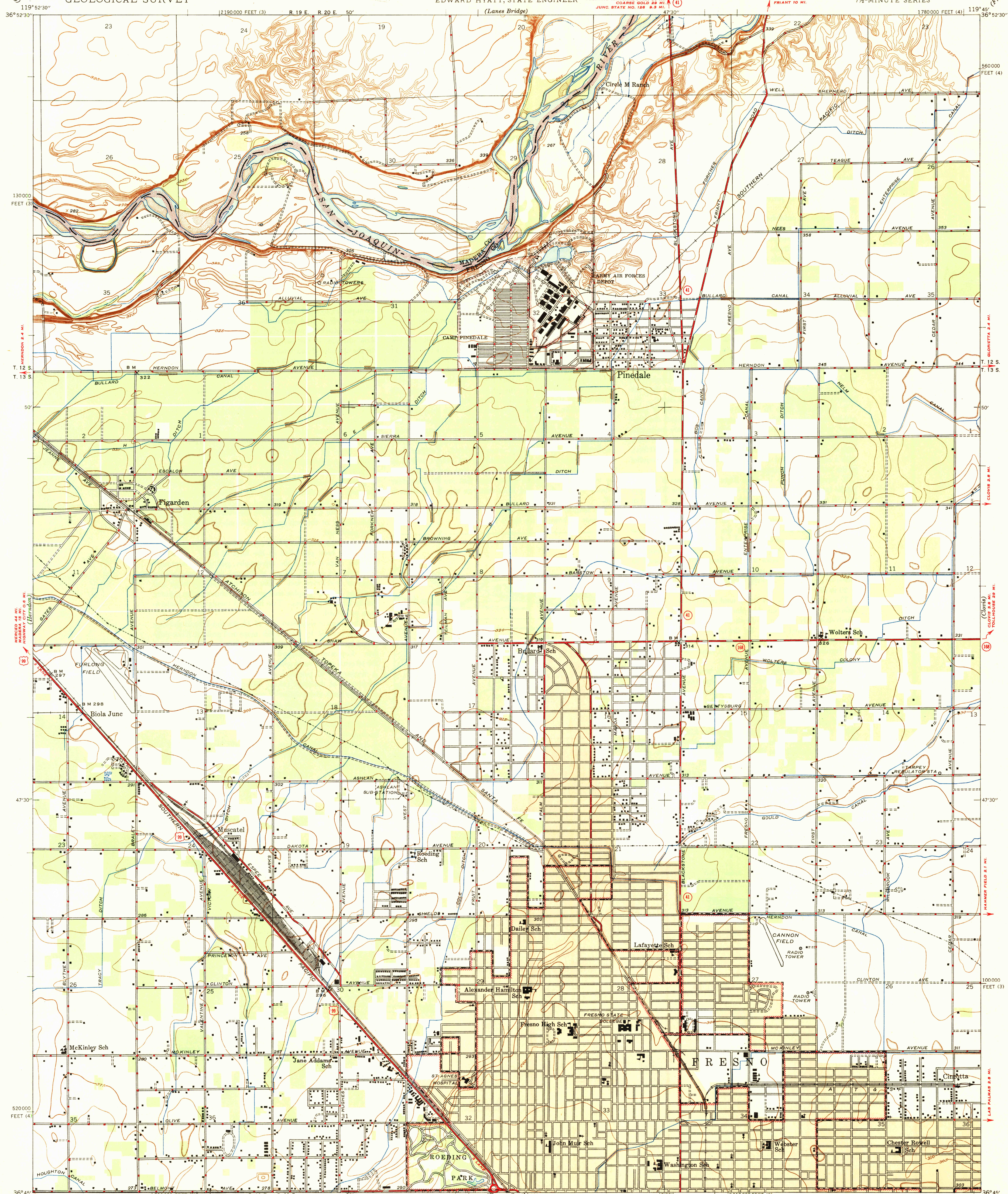
(7498)

UNITED STATES  
DEPARTMENT OF THE INTERIOR  
GEOLOGICAL SURVEY

U.S.G.S.  
FILE COPY  
Topographic and Publishing

STATE OF CALIFORNIA  
EARL WARREN, GOVERNOR  
C. H. PURCELL, DIRECTOR OF PUBLIC WORKS  
EDWARD HYATT, STATE ENGINEER

CALIFORNIA  
FRESNO NORTH QUADRANGLE  
7 1/2-MINUTE SERIES



Map by the Geological Survey  
1921  
revised in 1946

Gray tint indicates area in which  
only landmark buildings are shown

ROAD CLASSIFICATION  
1946  
Dependable hard-surface road  
Heavy-duty road  
Secondary hard-surface road  
All-weather road  
More than two lanes indicated along road with tick at point of change

APPROXIMATE MEAN  
DECLINATION, 1946

Scale 1:24,000  
Contour interval 5 feet  
Datum is mean sea level

USGS  
Historical File  
Topographic Division

FRESNO NORTH, CALIF.

Edition of 1947

NAME CHANGED FROM BULLARD (1:31680)  
N3645-W11945/7.5

JUL 17 1947

2220