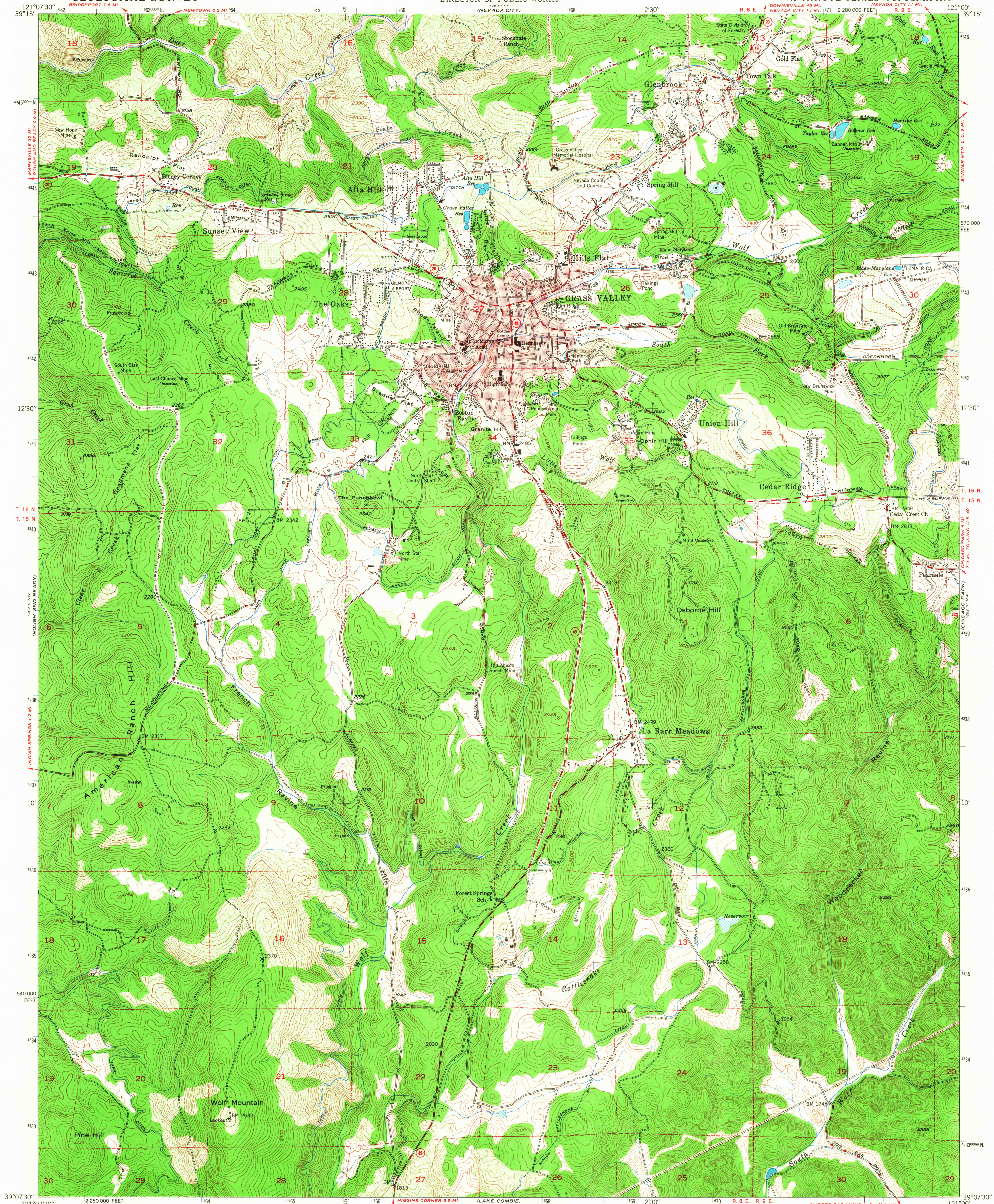


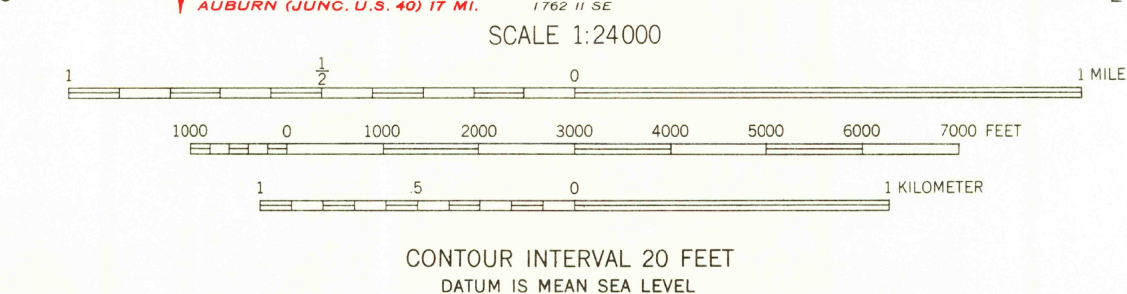
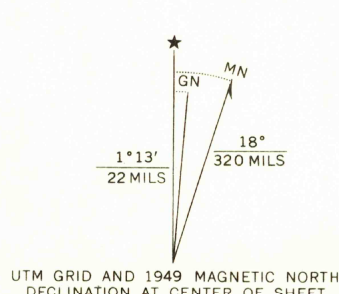
UNITED STATES
DEPARTMENT OF THE INTERIOR
GEOLOGICAL SURVEY

STATE OF CALIFORNIA
REPRESENTED BY THE
DIRECTOR OF PUBLIC WORKS
(NEVADA CITY)

GRASS VALLEY QUADRANGLE
CALIFORNIA NEVADA CO.
7.5 MINUTE SERIES (TOPOGRAPHIC)



Mapped, edited, and published by the Geological Survey
Control by USGS and USC&GS
Topography from aerial photographs by multiplex methods
Aerial photographs taken 1947. Field check 1949
Polyconic projection. 1927 North American datum
10,000-foot grid based on California coordinate system,
zone 2
Red tint indicates area in which only
landmark buildings are shown
Unchecked elevations are shown in brown
Dashed land lines indicate approximate location
1000-meter Universal Transverse Mercator grid ticks,
zone 10, shown in blue



USGS
Historical File
Topographic Division

ROAD CLASSIFICATION
HARD-SURFACE ALL WEATHER ROADS DRY WEATHER ROADS
Heavy-duty 4 LANE Improved dirt 4 LANE
Medium-duty 4 LANE Unimproved dirt 4 LANE
Loose-surface, graded, or narrow hard-surface 4 LANE
U. S. Route State Route

U.S.G.S.
FILE COPY
TOPOGRAPHIC DIVISION

GRASS VALLEY, CALIF.
N3907.5-W12100/7.5
1949
AMS 1762 II NE-SERIES V895

THIS MAP COMPLIES WITH NATIONAL MAP ACCURACY STANDARDS.
FOR SALE BY U. S. GEOLOGICAL SURVEY, DENVER, COLORADO 80225, OR WASHINGTON, D. C. 20242
A FOLDER DESCRIBING TOPOGRAPHIC MAPS AND SYMBOLS IS AVAILABLE ON REQUEST

5140
SEP 1969