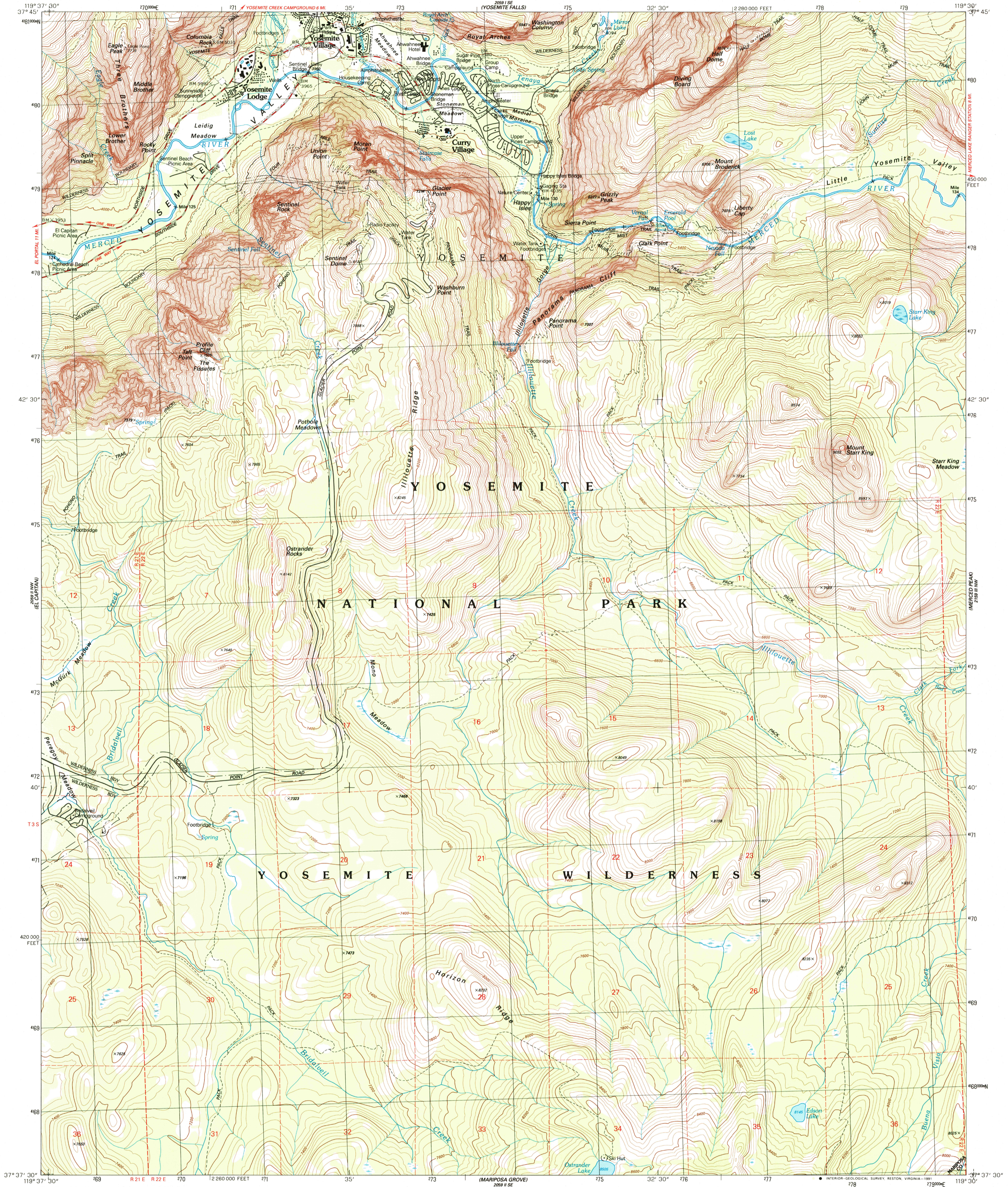
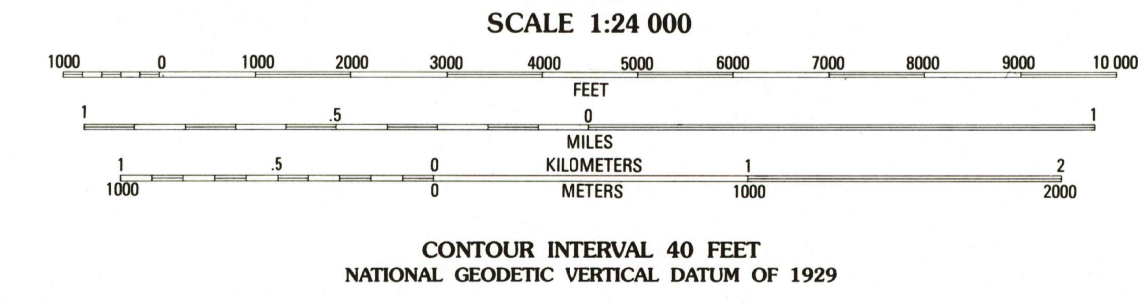
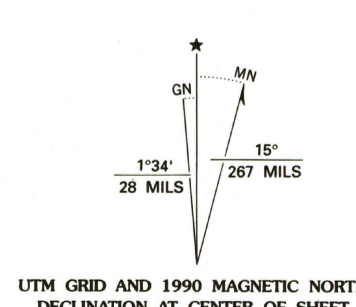


UNITED STATES
DEPARTMENT OF THE INTERIOR
GEOLOGICAL SURVEY

HALF DOME QUADRANGLE
CALIFORNIA
7.5 MINUTE SERIES (TOPOGRAPHIC)



Produced by the United States Geological Survey
Control by USGS and NOS/NOAA
Compiled by photogrammetric methods from aerial photographs taken 1984 and 1985. Field checked 1986. Map edited 1990
Projection and 10,000-foot grid ticks: California coordinate system, zone 3 (Lambert conformal conic)
1000-meter Universal Transverse Mercator grid, zone 11
1927 North American Datum
To place on the predicted North American Datum 1983 move the projection lines 11 meters north and 87 meters east as shown by dashed corner ticks
Where omitted, land lines have not been established or are not shown because of insufficient data
There may be private inholdings within the boundaries of the National or State reservations shown on this map



ROAD CLASSIFICATION

Primary highway, hard surface	Light-duty road, hard or improved surface
Secondary highway, hard surface	Unimproved road
Interstate Route	U.S. Route
	State Route

HALF DOME, CALIF.
37119-F5-TF-024
1990
DMA 2059 II NE-SERIES 8V95

USGS AND HISTORICAL MAP ARCHIVES
MAY 24 1994
REC'D FILE COPY

QUADRANGLE LOCATION

THIS MAP COMPLIES WITH NATIONAL MAP ACCURACY STANDARDS
FOR SALE BY U.S. GEOLOGICAL SURVEY, DENVER, COLORADO 80225, OR RESTON, VIRGINIA 22092
A FOLDER DESCRIBING TOPOGRAPHIC MAPS AND SYMBOLS IS AVAILABLE ON REQUEST