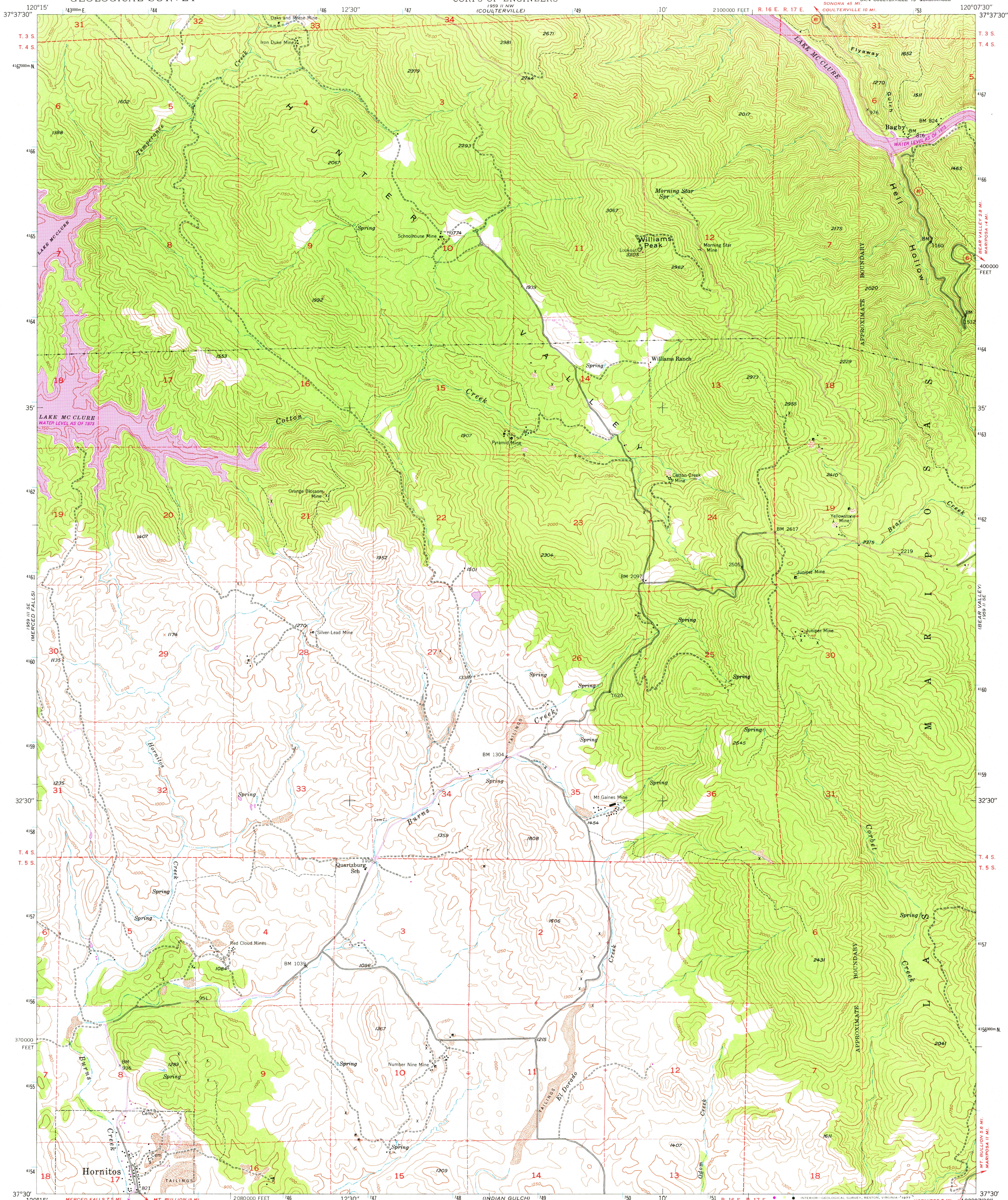


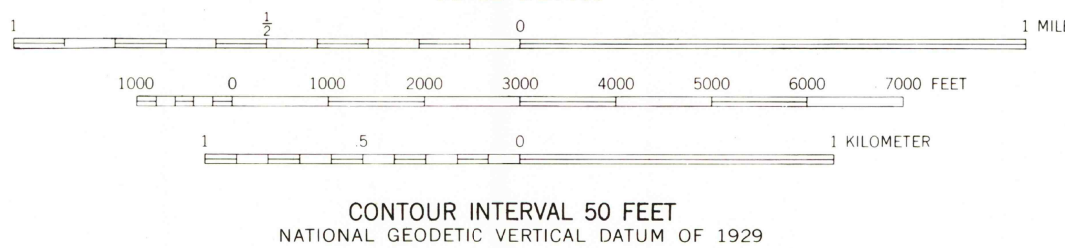
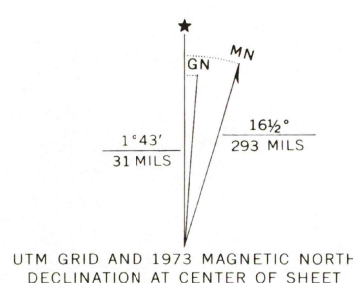
UNITED STATES
DEPARTMENT OF THE INTERIOR
GEOLOGICAL SURVEY

UNITED STATES
DEPARTMENT OF THE ARMY
CORPS OF ENGINEERS

HORNITOS QUADRANGLE
CALIFORNIA—MARIPOSA CO.
7.5 MINUTE SERIES (TOPOGRAPHIC)



Control by USGS and USC & GS
Topography from aerial photographs by multiplex methods
Aerial photographs taken 1945 Field check 1947
Polyconic projection. 1927 North American datum
10,000-foot grid based on California coordinate system,
Zone 3
1000-meter Universal Transverse Mercator grid ticks,
zone 10, shown in blue
Dashed land lines indicate approximate locations
Revisions shown in purple compiled from aerial photographs
taken 1973. This information not field checked



ROAD CLASSIFICATION
Light duty Unimproved dirt

USGS
Historical File
Topographic Division

HORNITOS, CALIF.
SW/4 COULTERVILLE 15' QUADRANGLE
N3730-W12007.5/7.5

1947
PHOTOREVISED 1973
AMS 1959 II SW—SERIES V895

MAR 23 1977
4400