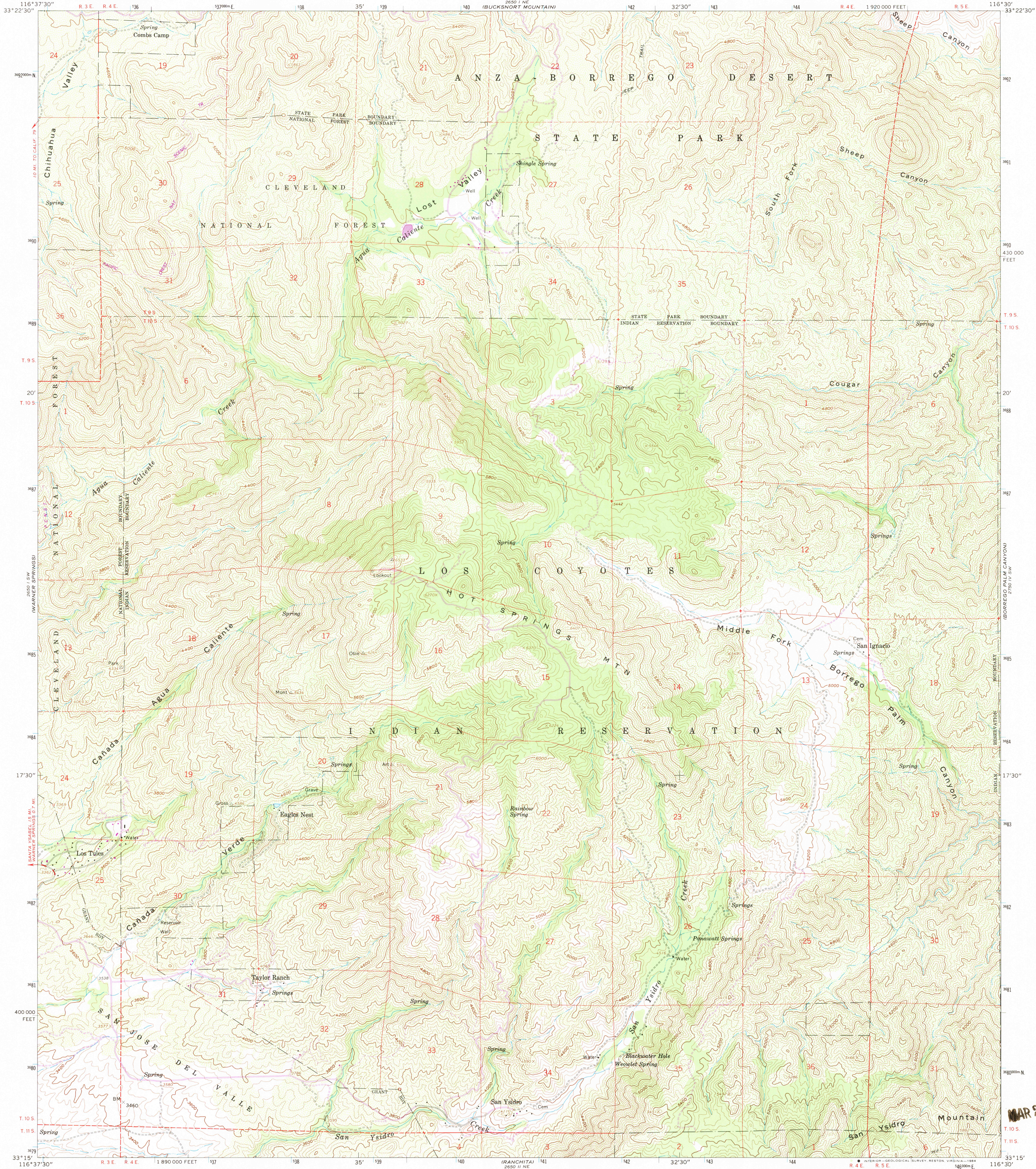


UNITED STATES
DEPARTMENT OF THE INTERIOR
GEOLOGICAL SURVEY

HOT SPRINGS MTN. QUADRANGLE
CALIFORNIA—SAN DIEGO CO.
7.5 MINUTE SERIES (TOPOGRAPHIC)
SE 1/4 WARNER SPRINGS 15' QUADRANGLE



Mapped, edited and published by the Geological Survey
Control by USGS, NOS/NOAA, and USCE
Topography from aerial photographs by photogrammetric methods
Aerial photographs taken 1955. Field check 1960
Polyconic projection. 1927 North American Datum
10,000-foot grid based on California coordinate system, zone 6
1000-meter Universal Transverse Mercator grid ticks,
zone 11, shown in blue
Dashed land lines indicate approximate locations
Land lines omitted in T. 9 S.—R. 5 E., and in parts of
T. 9 S. R. 4 E., T. 10 S.—R. 5 E., because of insufficient data
To place on the predicted North American Datum 1983
move the projection lines 2 meters south and
79 meters east as shown by dashed corner ticks

There may be private inholdings within the boundaries
of the National or State reservations shown on this map

SCALE 1:24 000
1 0 1000 2000 3000 4000 5000 6000 7000 FEET
1 5 10 15 20 25 30 35 40 45 50 KILOMETER
CONTOUR INTERVAL 40 FEET
NATIONAL GEODETIC VERTICAL DATUM OF 1929



ROAD CLASSIFICATION
Medium-duty ——— Light-duty ———
Unimproved dirt ———

HOT SPRINGS MTN., CALIF.
SE 1/4 WARNER SPRINGS 15' QUADRANGLE
33116-C5-TF-024

1960
PHOTOREVISED 1982
DMA 2650 1 SE—SERIES Y895

Revisions shown in purple and woodland compiled from
aerial photographs taken 1980 and other source data
Partial field check by U.S. Forest Service. Map edited 1982

MAR 23 1984