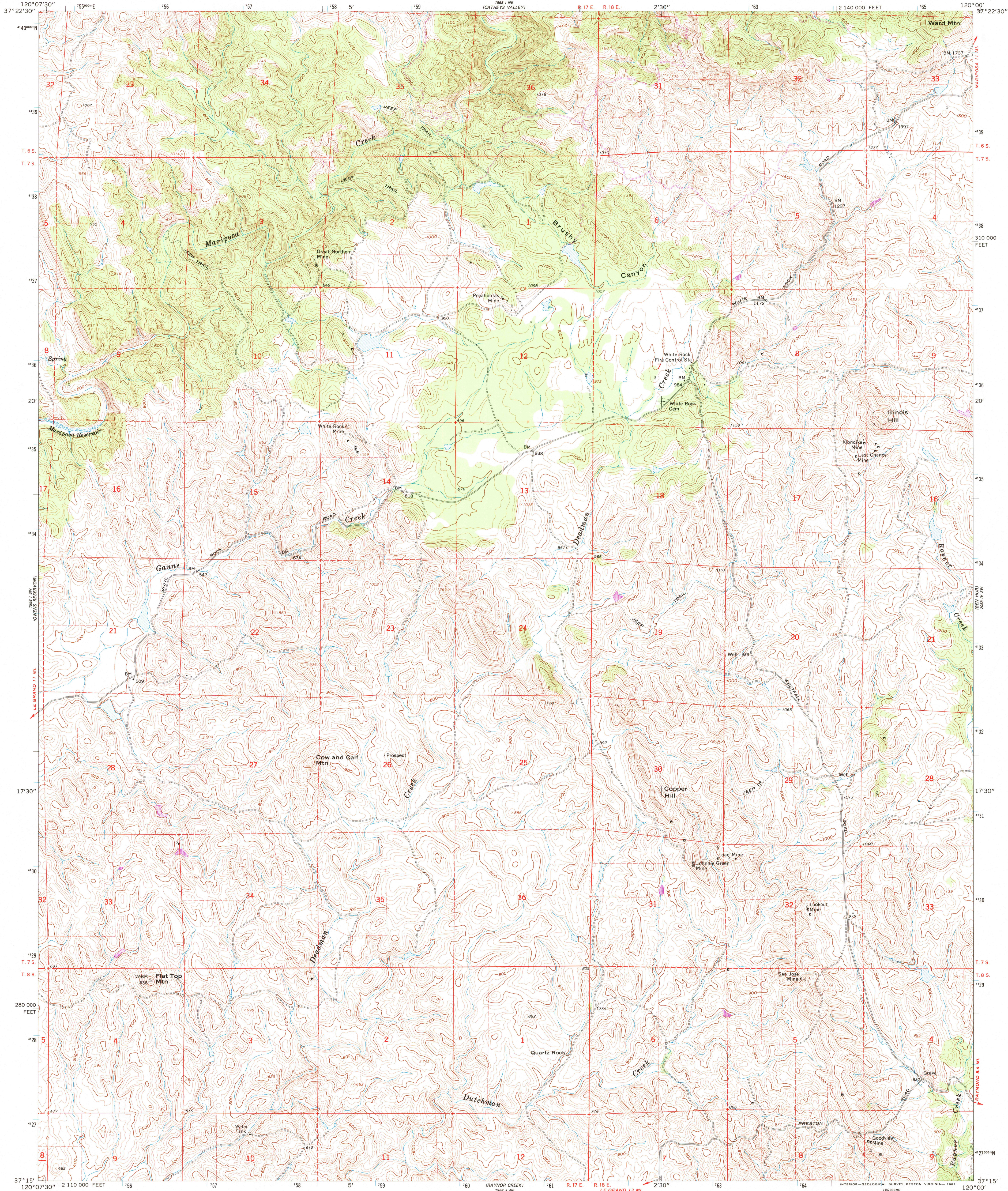


UNITED STATES
DEPARTMENT OF THE INTERIOR
GEOLOGICAL SURVEY

ILLINOIS HILL QUADRANGLE
CALIFORNIA-MARIPOSA CO.
7.5 MINUTE SERIES (TOPOGRAPHIC)
SE/4 INDIAN GULCH 15' QUADRANGLE



Mapped, edited, and published by the Geological Survey in cooperation with California Department of Water Resources

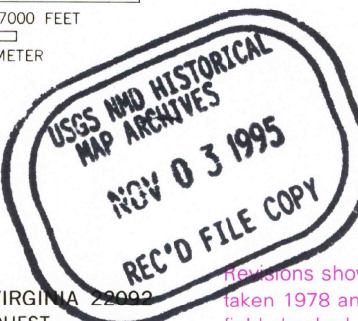
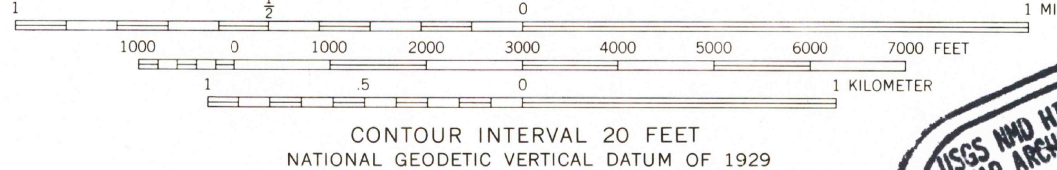
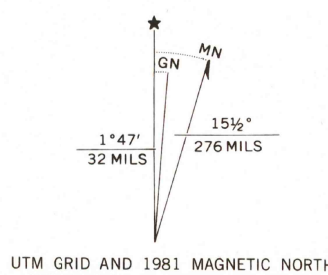
Control by USGS and NOS/NOAA

Topography by photogrammetric methods from aerial photographs taken 1959. Field checked 1962

Polyconic projection. 1927 North American datum 10,000-foot grid based on California coordinate system, zone 3 1000-meter Universal Transverse Mercator grid ticks, zone 10, shown in blue

To place on the predicted North American Datum 1983 move the projection lines 10 meters north and 89 meters east as shown by dashed corner ticks

Area covered by dashed light-blue pattern is subject to controlled inundation



ROAD CLASSIFICATION
Light-duty ————— Unimproved dirt =

ILLINOIS HILL, CALIF.
SE/4 INDIAN GULCH 15' QUADRANGLE
N3715—W12000/7.5

1962
PHOTOGRAPHED 1981
DMA 1958 I SE—SERIES V895

THIS MAP COMPLIES WITH NATIONAL MAP ACCURACY STANDARDS
FOR SALE BY U. S. GEOLOGICAL SURVEY, DENVER, COLORADO 80225, OR RESTON, VIRGINIA 20192
A FOLDER DESCRIBING TOPOGRAPHIC MAPS AND SYMBOLS IS AVAILABLE ON REQUEST

Persons shown in purple compiled from aerial photographs taken 1978 and other source data. This information not field checked. Map edited 1981

