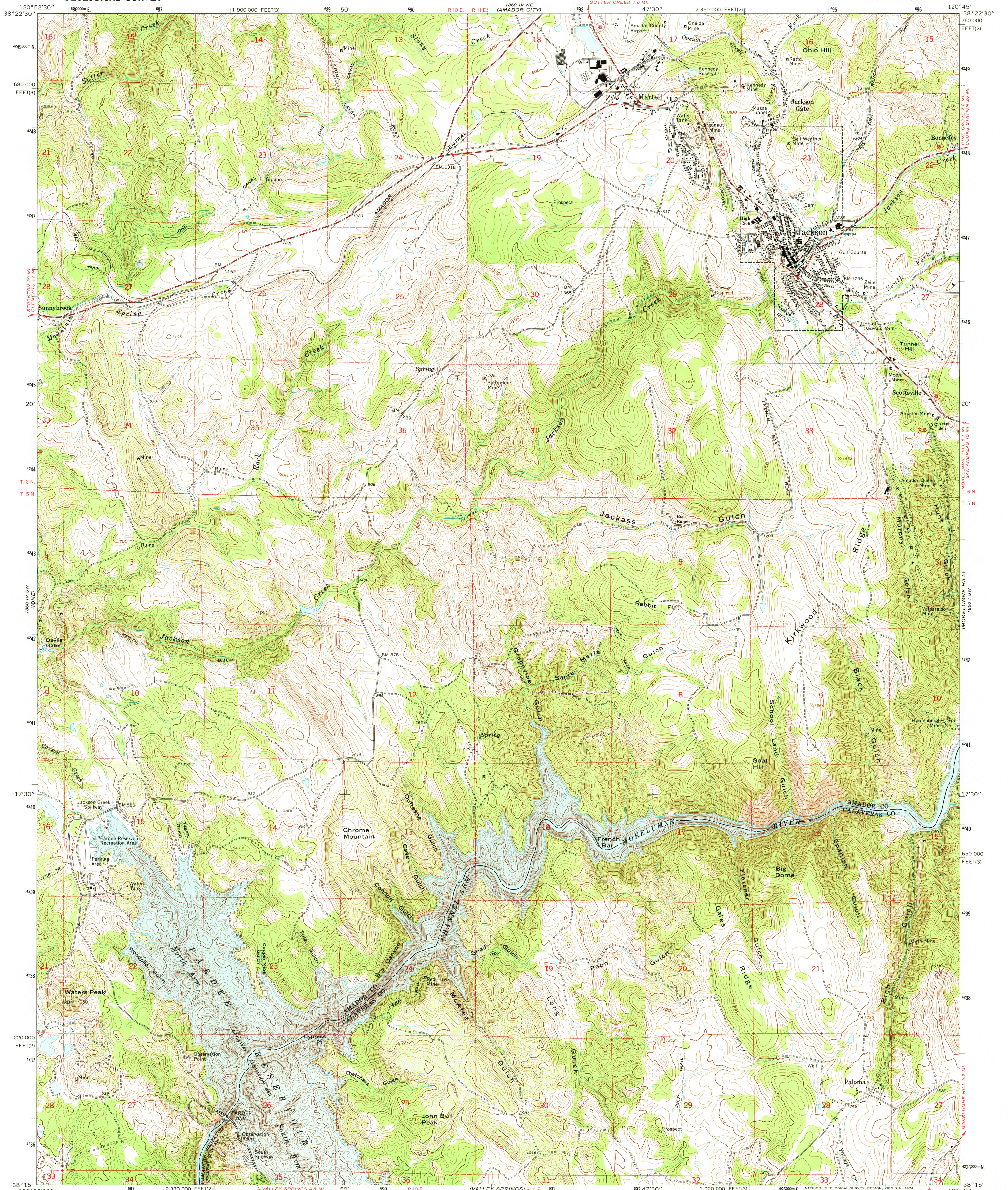


UNITED STATES
DEPARTMENT OF THE INTERIOR
GEOLOGICAL SURVEY

JACKSON QUADRANGLE
CALIFORNIA
7.5 MINUTE SERIES (TOPOGRAPHIC)
SE 4 SUTTER CREEK 15' QUADRANGLE



Mapped, edited, and published by the Geological Survey
in cooperation with California Department of Water Resources

Control by USGS and USC&GS

Topography by photogrammetric methods from aerial
photographs taken 1959. Field checked 1962

Underwater contours by East Bay Municipal Utility District

Polyconic projection. 1927 North American datum

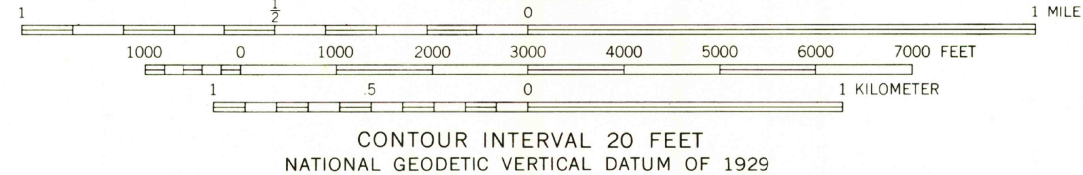
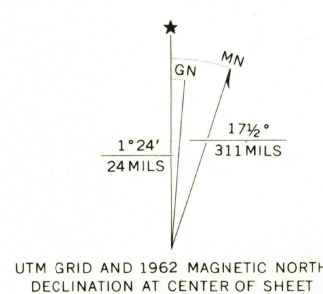
10,000-foot grids based on California coordinate system,
zones 2 and 3

1000-meter Universal Transverse Mercator grid ticks,
zone 10, shown in blue

Dashed blue line indicates area to be submerged by
Camanche Reservoir at elevation 236

Fine red dashed lines indicate selected fence lines

Map photosinspected 1973
No major culture or drainage change observed



THIS MAP COMPLIES WITH NATIONAL MAP ACCURACY STANDARDS
FOR SALE BY U. S. GEOLOGICAL SURVEY, DENVER, COLORADO 80225, OR RESTON, VIRGINIA 22092
A FOLDER DESCRIBING TOPOGRAPHIC MAPS AND SYMBOLS IS AVAILABLE ON REQUEST



ROAD CLASSIFICATION
Medium-duty ——— Light-duty ———
Unimproved dirt = = = = =
○ State Route

USGS
Historical File
Topographic Division

JACKSON, CALIF.
SE 4 SUTTER CREEK 15' QUADRANGLE
N 3815—W 12045/7.5
PHOTOINSPECTED 1973
AMS 1860 IV SE—SERIES V895

NOV 0 5 1974

3450