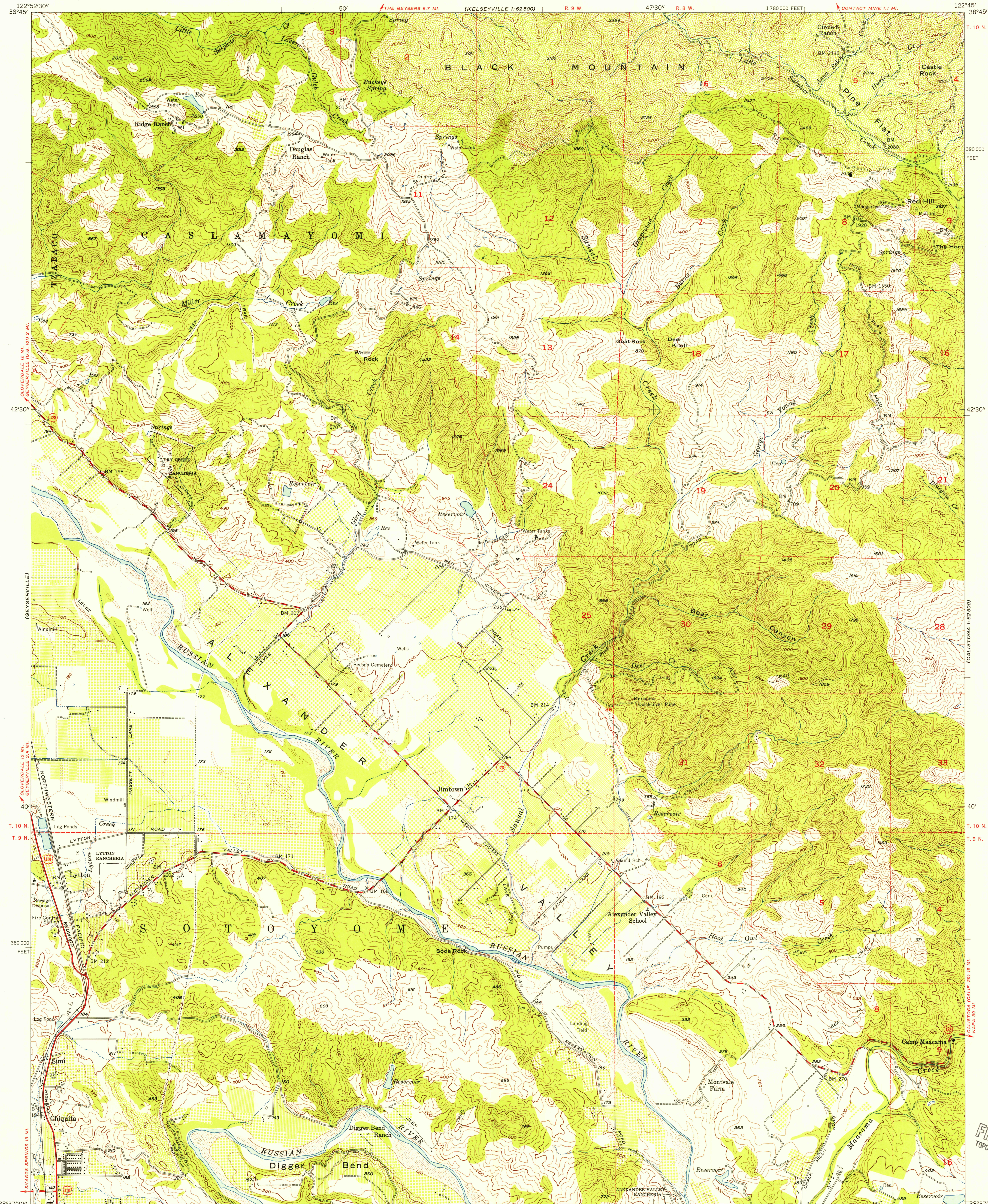


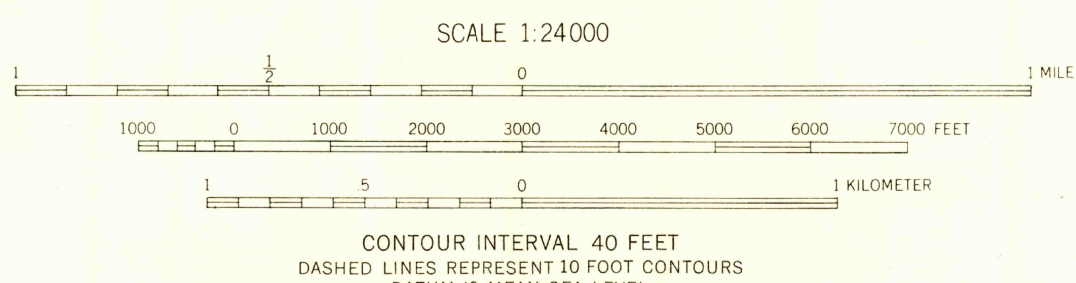
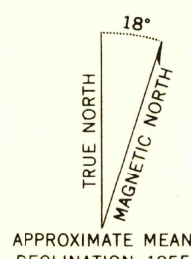
UNITED STATES  
DEPARTMENT OF THE INTERIOR  
GEOLOGICAL SURVEY

STATE OF CALIFORNIA  
GOODWIN J. KNIGHT, GOVERNOR  
FRANK B. DURKEE, DIRECTOR OF PUBLIC WORKS  
HARVEY O. BANKS, STATE ENGINEER

JIMTOWN QUADRANGLE  
CALIFORNIA—SONOMA CO.  
7.5 MINUTE SERIES (TOPOGRAPHIC)  
NE/4 HEALDSBURG 15' QUADRANGLE



Mapped, edited, and published by the Geological Survey  
Control by USGS and USC&GS  
Topography from aerial photographs by multiplex methods  
and by planimetric surveys 1955. Aerial photographs taken 1953  
Polyconic projection. 1927 North American datum  
10,000-foot grid based on California coordinate system, zone 2  
Dashed land lines indicate approximate locations  
Unchecked elevations are shown in brown



USGS  
Historical File  
Topographic Division

| ROAD CLASSIFICATION |                 |
|---------------------|-----------------|
| Heavy-duty          | Light-duty      |
| Medium-duty         | Unimproved dirt |
| U.S. Route          | State Route     |



JIMTOWN, CALIF.  
NE/4 HEALDSBURG 15' QUADRANGLE  
N 3837.5-W 12245/7.5

1955  
JUN 22 1956