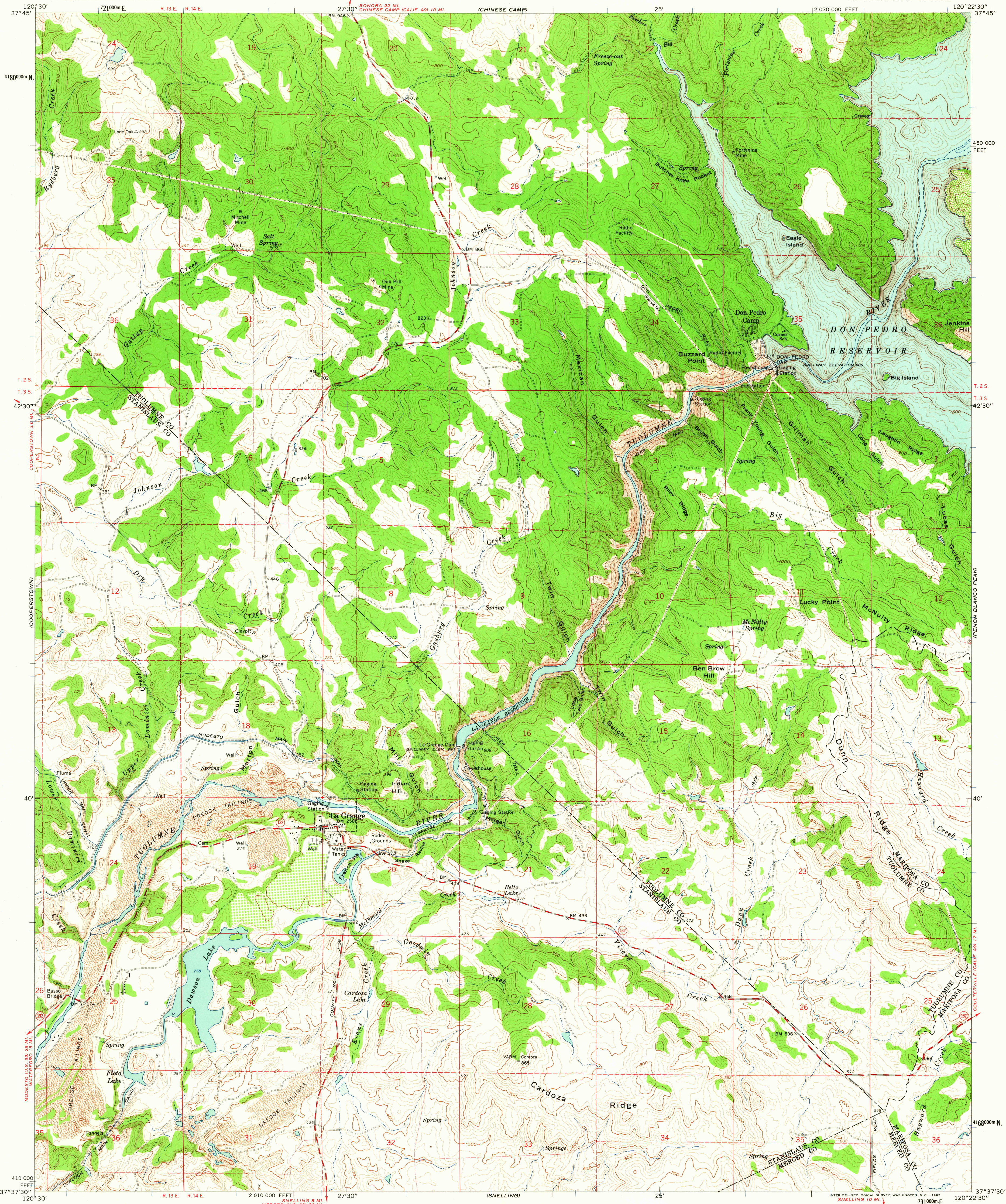
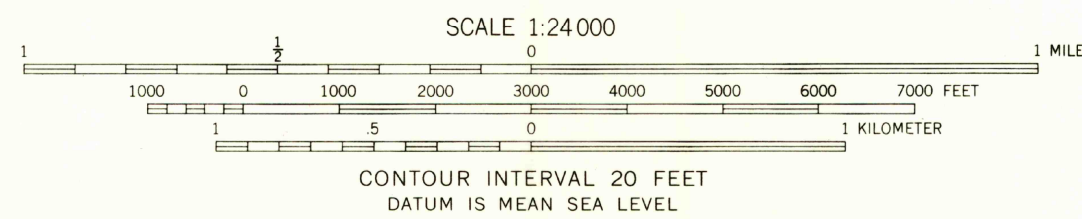
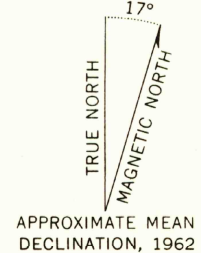


UNITED STATES
DEPARTMENT OF THE INTERIOR
GEOLOGICAL SURVEY

LA GRANGE QUADRANGLE
CALIFORNIA
7.5 MINUTE SERIES (TOPOGRAPHIC)
NW 1/4 MERCER FALLS 15' QUADRANGLE



Maped, edited, and published by the Geological Survey in cooperation with California Department of Water Resources Control by USGS and USC&GS
Topography by photogrammetric methods from aerial photographs taken 1959. Field checked 1962
Underwater contours by Turlock Irrigation District
Polyconic projection. 1927 North American datum
10,000-foot grid based on California coordinate system, zone 3
1000-meter Universal Transverse Mercator grid ticks, zone 10, shown in blue
Fine red dashed lines indicate selected fence lines



ROAD CLASSIFICATION
Medium-duty ——— Light-duty ———
Unimproved dirt ———
State Route ———



LA GRANGE, CALIF.
NW 1/4 MERCER FALLS 15' QUADRANGLE
N3737.5-W12022.5/7.5

1962

THIS MAP COMPLIES WITH NATIONAL MAP ACCURACY STANDARDS
FOR SALE BY U.S. GEOLOGICAL SURVEY, DENVER 25, COLORADO OR WASHINGTON 25, D. C.
A FOLDER DESCRIBING TOPOGRAPHIC MAPS AND SYMBOLS IS AVAILABLE ON REQUEST

DOCT 24 1963

3595