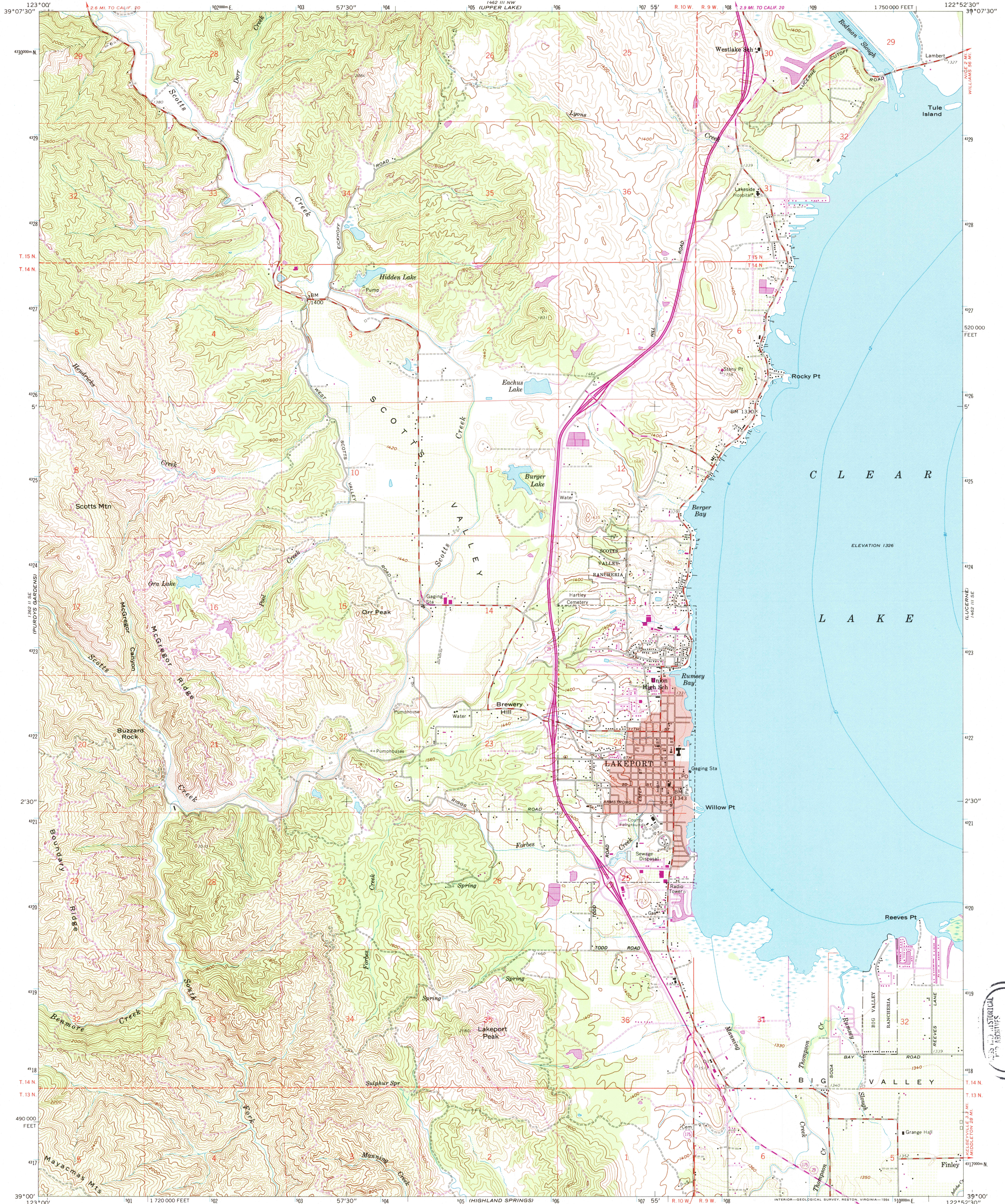


UNITED STATES  
DEPARTMENT OF THE INTERIOR  
GEOLOGICAL SURVEY

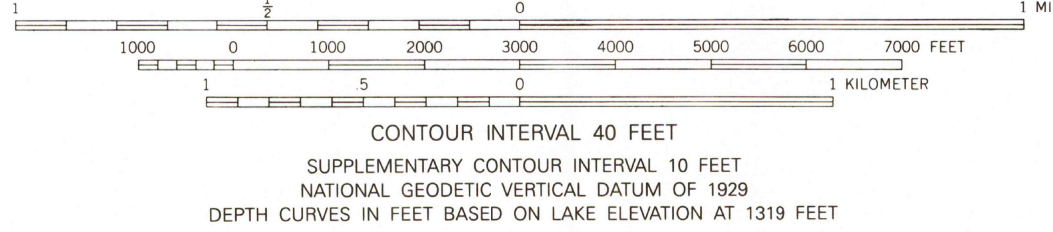
LAKEPORT QUADRANGLE  
CALIFORNIA-LAKE CO.  
7.5 MINUTE SERIES (TOPOGRAPHIC)



Produced by the United States Geological Survey in cooperation with California Department of Water Resources

Control by USGS and NOS/NOAA  
Compiled from aerial photographs taken 1957. Topography by plane-table surveys 1958  
Hydrography compiled from NOS/NOAA data  
North American Datum of 1927 (NAD 27). Projection and 10000-foot ticks: California Coordinate System, zone 2 (Lambert Conformal Conic)  
Blue 1000-meter Universal Transverse Mercator ticks, zone 10  
North American Datum of 1983 (NAD 83) is shown by dashed corner ticks. The values of the shift between NAD 27 and NAD 83 for 7.5-minute intersections are obtainable from National Geodetic Survey NADCON software  
There may be private inholdings within the boundaries of the National or State reservations shown on this map

UTM GRID AND 1984 MAGNETIC NORTH DECLINATION AT CENTER OF SHEET  
Red tint indicates areas in which only landmark buildings are shown  
Photinspected from 1991 source; no major culture or drainage changes observed. Boundaries and names verified 1994



THIS MAP COMPLIES WITH NATIONAL MAP ACCURACY STANDARDS  
FOR SALE BY U.S. GEOLOGICAL SURVEY  
DENVER, COLORADO 80225, OR RESTON, VIRGINIA 22092  
A FOLDER DESCRIBING TOPOGRAPHIC MAPS AND SYMBOLS IS AVAILABLE ON REQUEST

Revisions shown in purple compiled from aerial photographs taken 1975. This information not field checked. Map edited 1978



ROAD CLASSIFICATION  
Primary highway, all weather, hard surface  
Secondary highway, all weather, hard surface  
Light-duty road, all weather, improved surface  
Unimproved road, fair or dry weather  
Interstate Route  
U. S. Route  
State Route

LAKEPORT, CA  
39122-A8-TF-024  
1958  
PHOTOREVISED 1978  
MINOR REVISION 1994  
DMA 1462 III SW-SERIES V895

APR 17 1996  
ASTORIA  
SERIES  
FILE COPY

