

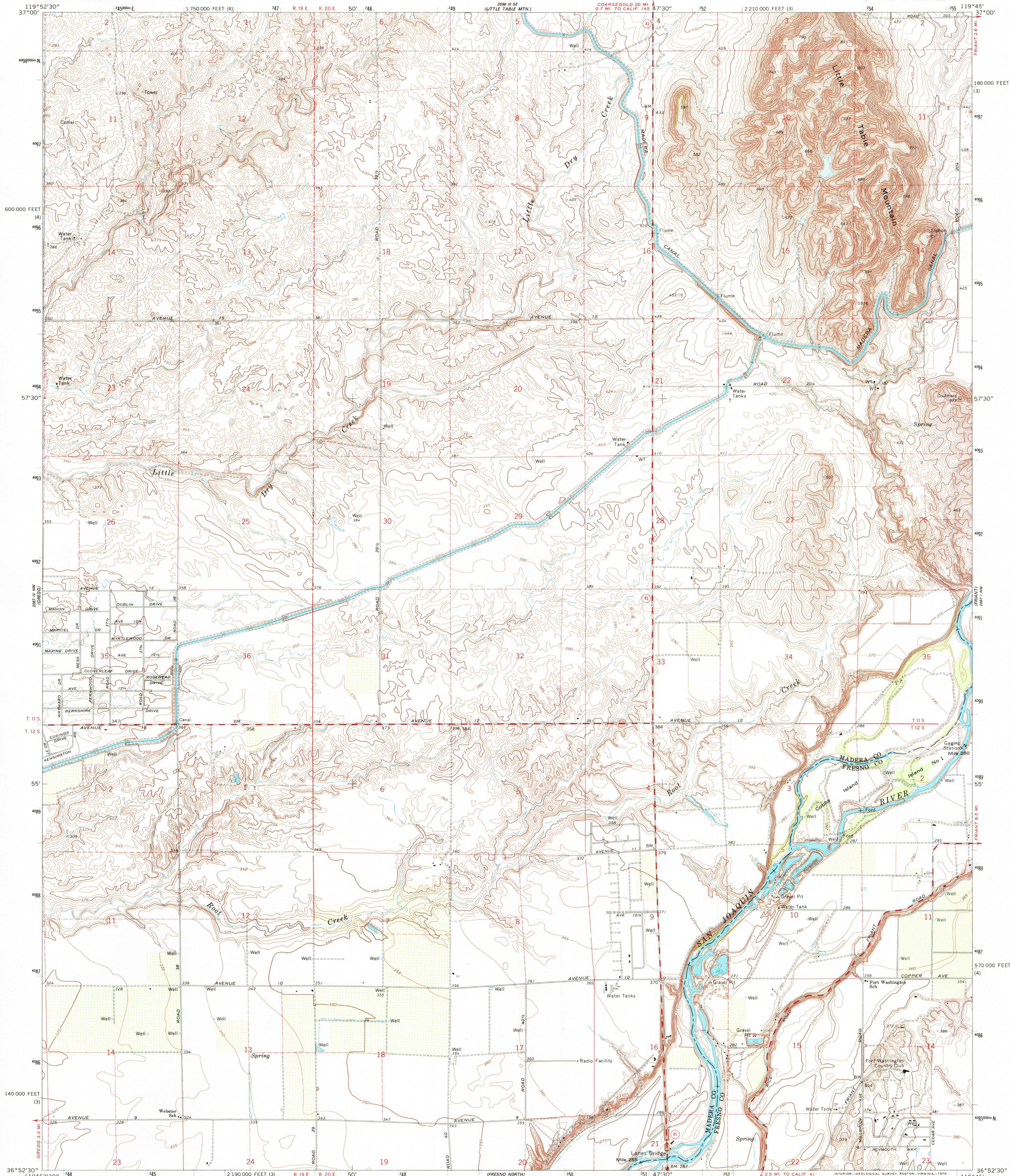
Scale 1:24,000
(1 inch = 2,000 feet)



U.S. DEPARTMENT OF THE INTERIOR
U.S. GEOLOGICAL SURVEY

LANES BRIDGE QUADRANGLE
CALIFORNIA
7.5 MINUTE SERIES (TOPOGRAPHIC)
NE/4 HERNDON 15' QUADRANGLE

Scale 1:24,000
(1 inch = 2,000 feet)



Mapped, edited, and published by the Geological Survey

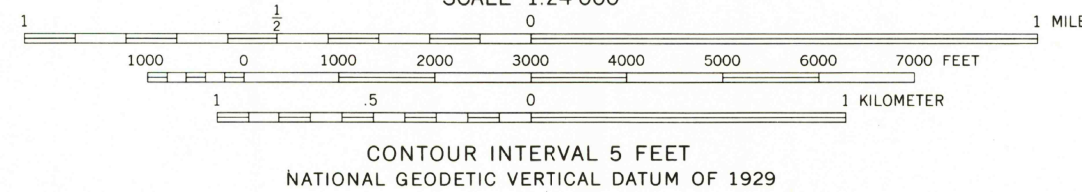
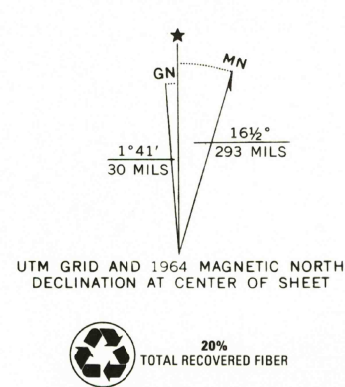
Control by USGS and USC&GS

Topography by photogrammetric methods from aerial photographs taken 1962. Field checked 1964

Polycyclic projection. 1927 North American datum
10,000-foot grids based on California coordinate system,
zones 3 and 4
1000-meter Universal Transverse Mercator grid ticks,
zone 11, shown in blue

Fine red dashed lines indicate selected fence lines

Map photoinspected 1973
No major culture or drainage changes observed



THIS MAP COMPLIES WITH NATIONAL MAP ACCURACY STANDARDS
FOR SALE BY U.S. GEOLOGICAL SURVEY, P.O. BOX 25286, DENVER, COLORADO 80225
A FOLDER DESCRIBING TOPOGRAPHIC MAPS AND SYMBOLS IS AVAILABLE ON REQUEST

ROAD CLASSIFICATION
Medium-duty ——— Light-duty ———
Unimproved dirt ———
○ State Route



RECEIVED
AUG 31 2001

USGS NWHD
HISTORICAL MAP ARCHIVES

LANES BRIDGE, CALIF.
NE/4 HERNDON 15' QUADRANGLE
N3652.5—W11945/7.5

1964
PHOTOINSPECTED 1973
AMS 2057 IV NE—SERIES V895

