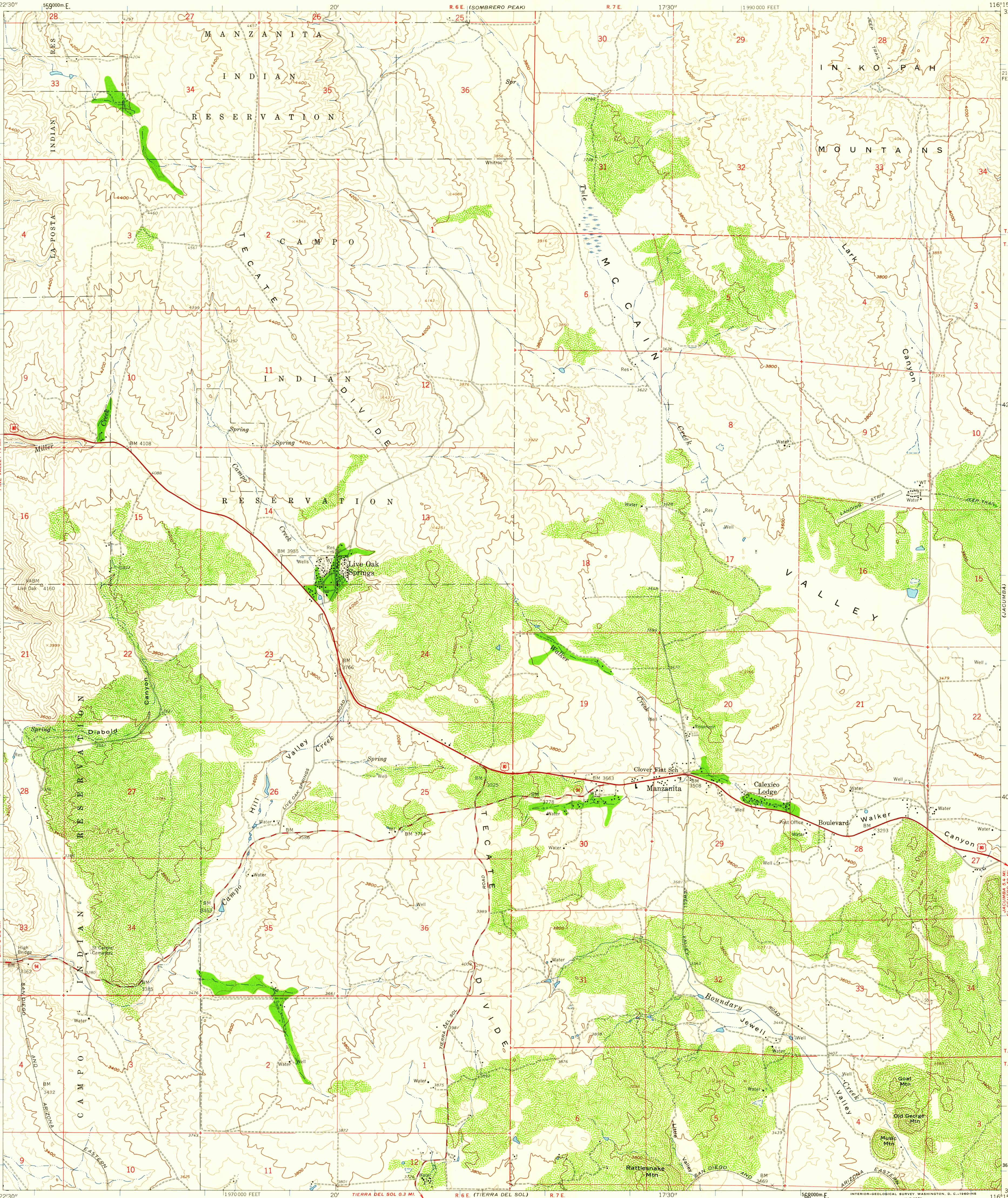


UNITED STATES
DEPARTMENT OF THE INTERIOR
GEOLOGICAL SURVEY

STATE OF CALIFORNIA
EDMUND G. BROWN, GOVERNOR
HARVEY O. BANKS, DIRECTOR OF WATER RESOURCES

LIVE OAK SPRINGS QUADRANGLE
CALIFORNIA—SAN DIEGO CO.
7.5 MINUTE SERIES (TOPOGRAPHIC)
NE 1/4 CAMPO 15' QUADRANGLE



Mapped, edited, and published by the Geological Survey
Control by USGS, USC&GS, and USCE
Topography from aerial photographs by photogrammetric methods
Aerial photographs taken 1954. Field check 1959
Polyconic projection. 1927 North American datum
10,000-foot grid based on California coordinate system, zone 6
1000-meter Universal Transverse Mercator grid ticks,
zone 11, shown in blue
Dashed land lines indicate approximate locations
Unchecked elevations are shown in brown

TRUE NORTH
MAGNETIC NORTH
APPROXIMATE MEAN
DECLINATION, 1959

SCALE 1:24,000
CONTOUR INTERVAL 40 FEET
DATUM IS MEAN SEA LEVEL
THIS MAP COMPLIES WITH NATIONAL MAP ACCURACY STANDARDS
FOR SALE BY U. S. GEOLOGICAL SURVEY, DENVER 25, COLORADO OR WASHINGTON 25, D. C.
A FOLDER DESCRIBING TOPOGRAPHIC MAPS AND SYMBOLS IS AVAILABLE ON REQUEST

USGS
Historical File
Topographic Division
ROAD CLASSIFICATION
Heavy-duty ——— Light-duty ———
Medium-duty ——— Unimproved dirt ———
U. S. Route ——— State Route ———
QUADRANGLE LOCATION
LIVE OAK SPRINGS, CALIF.
NE 1/4 CAMPO 15' QUADRANGLE
N3237.5—W11615/7.5
1959
JUN 16 1960