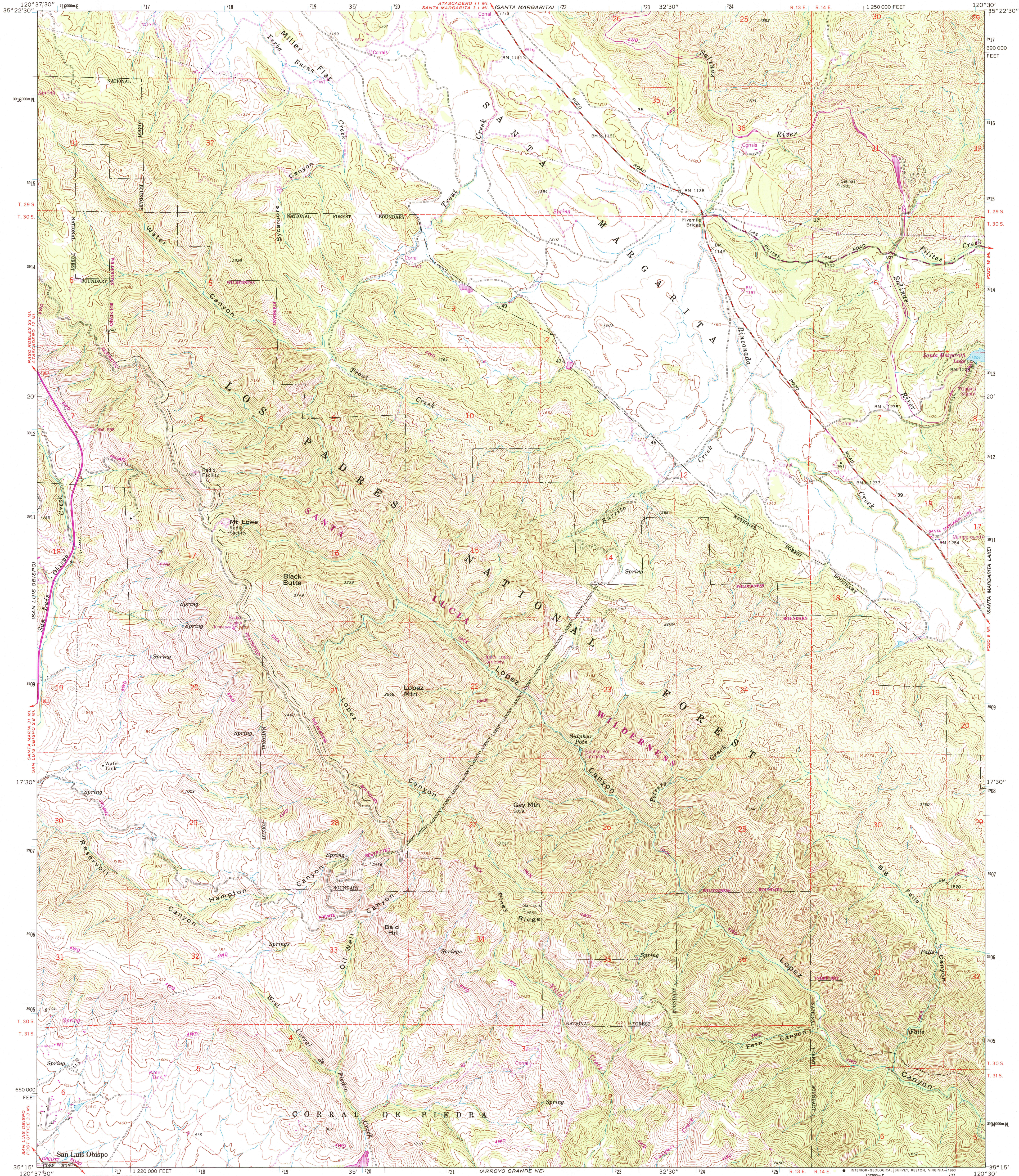


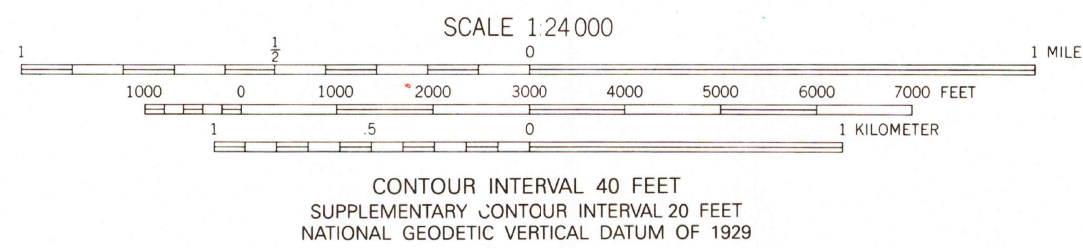
UNITED STATES
DEPARTMENT OF THE INTERIOR
GEOLOGICAL SURVEY

LOPEZ MTN. QUADRANGLE
CALIFORNIA-SAN LUIS OBISPO CO.
7.5 MINUTE SERIES (TOPOGRAPHIC)



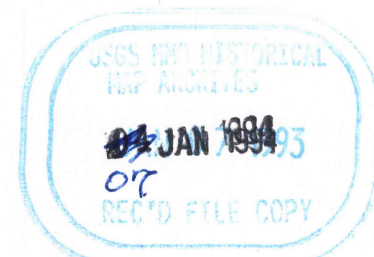
Produced by the United States Geological Survey
in cooperation with California Department of
Water Resources
Control by USGS and NOS/NOAA
Compiled from aerial photographs taken 1963. Revisions shown
in purple compiled from aerial photographs taken 1987 and
other sources and have been field checked. Map edited 1993
Conflicts may exist between some updated features and previously
mapped contours
1927 North American Datum (NAD 27). Projection and
1000-foot ticks - California Coordinate System, zone 5
(Lambert Conformal Conic)
Blue 1000-meter Universal Transverse Mercator ticks, zone 10
North American Datum of 1983 (NAD 83) is shown by dashed
corner ticks. The values of the shift between NAD 27 and NAD 83
for 7.5-minute intersections are given in USGS Bulletin 1875

There may be private inholdings within the boundaries of the
National or State reservations shown on this map
Fine red dashed lines indicate selected fence lines



THIS MAP COMPLIES WITH NATIONAL MAP ACCURACY STANDARDS
FOR SALE BY U.S. GEOLOGICAL SURVEY
DENVER, COLORADO 80225, OR RESTON, VIRGINIA 22092
A FOLDER DESCRIBING TOPOGRAPHIC MAPS AND SYMBOLS IS AVAILABLE ON REQUEST

ROAD CLASSIFICATION
Heavy-duty ——— Light-duty ———
Medium-duty ——— Unimproved dirt ———
U.S. Route



LOPEZ MTN., CALIF.
35120-C5-TF-024
1985
REVISED 1993
DMA 1854 I SE-SERIES V895