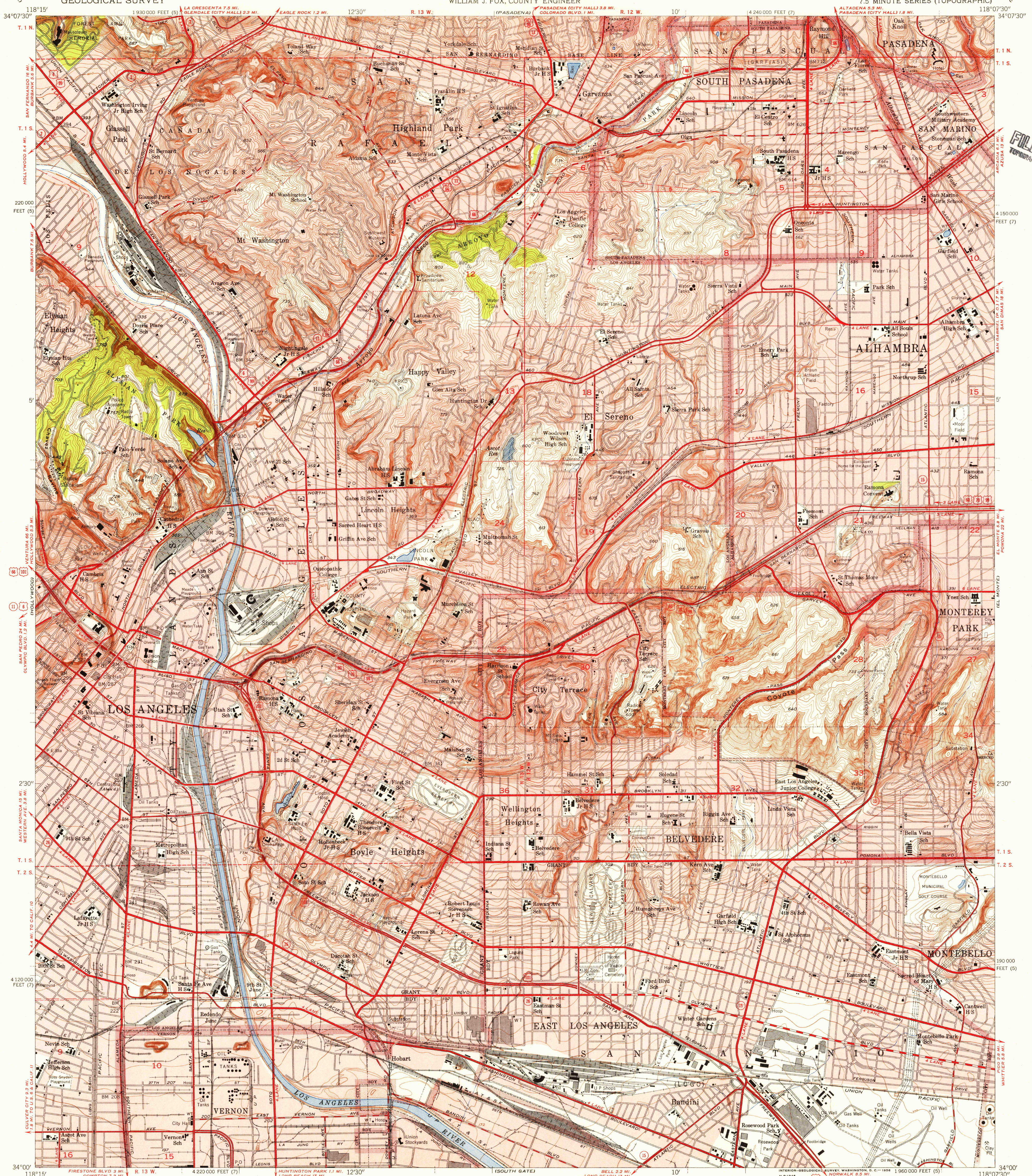


UNITED STATES
DEPARTMENT OF THE INTERIOR
GEOLOGICAL SURVEY

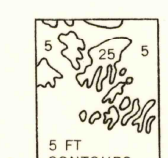
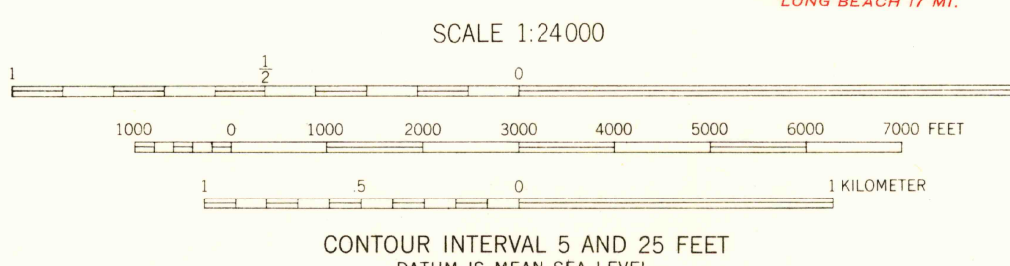
LOS ANGELES COUNTY
BOARD OF SUPERVISORS
JOHN ANSON FORD, CHAIRMAN
WILLIAM J. FOX, COUNTY ENGINEER

LOS ANGELES QUADRANGLE
CALIFORNIA—LOS ANGELES CO.
7.5 MINUTE SERIES (TOPOGRAPHIC)



Maped, edited, and published by the Geological Survey
Control by USGS and US&GS
Topography by planetable surveys 1923-1925
Culture revised from aerial photographs taken 1952
Field check 1953
Polyconic projection. 1927 North American datum
10,000-foot grids based on California coordinate system, zones 5 and 7
Red tint indicates areas in which only landmark buildings are shown
Dashed land lines indicate approximate locations

TRUE NORTH
MAGNETIC NORTH
APPROXIMATE MEAN
DECLINATION, 1953



U.S. Route
State Route

ROAD CLASSIFICATION
Heavy-duty
Medium-duty
Light-duty
Unimproved dirt

USGS
Historical File
Topographic Division

LOS ANGELES, CALIF.
N3400-W11807.5/7.5

U.S.G.S.
FILE COPY
TOPOGRAPHIC DIVISION

FOR SALE BY U. S. GEOLOGICAL SURVEY, FEDERAL CENTER, DENVER, COLORADO OR WASHINGTON 25, D. C.
A FOLDER DESCRIBING TOPOGRAPHIC MAPS AND SYMBOLS IS AVAILABLE ON REQUEST

1953

MAR 2 1953