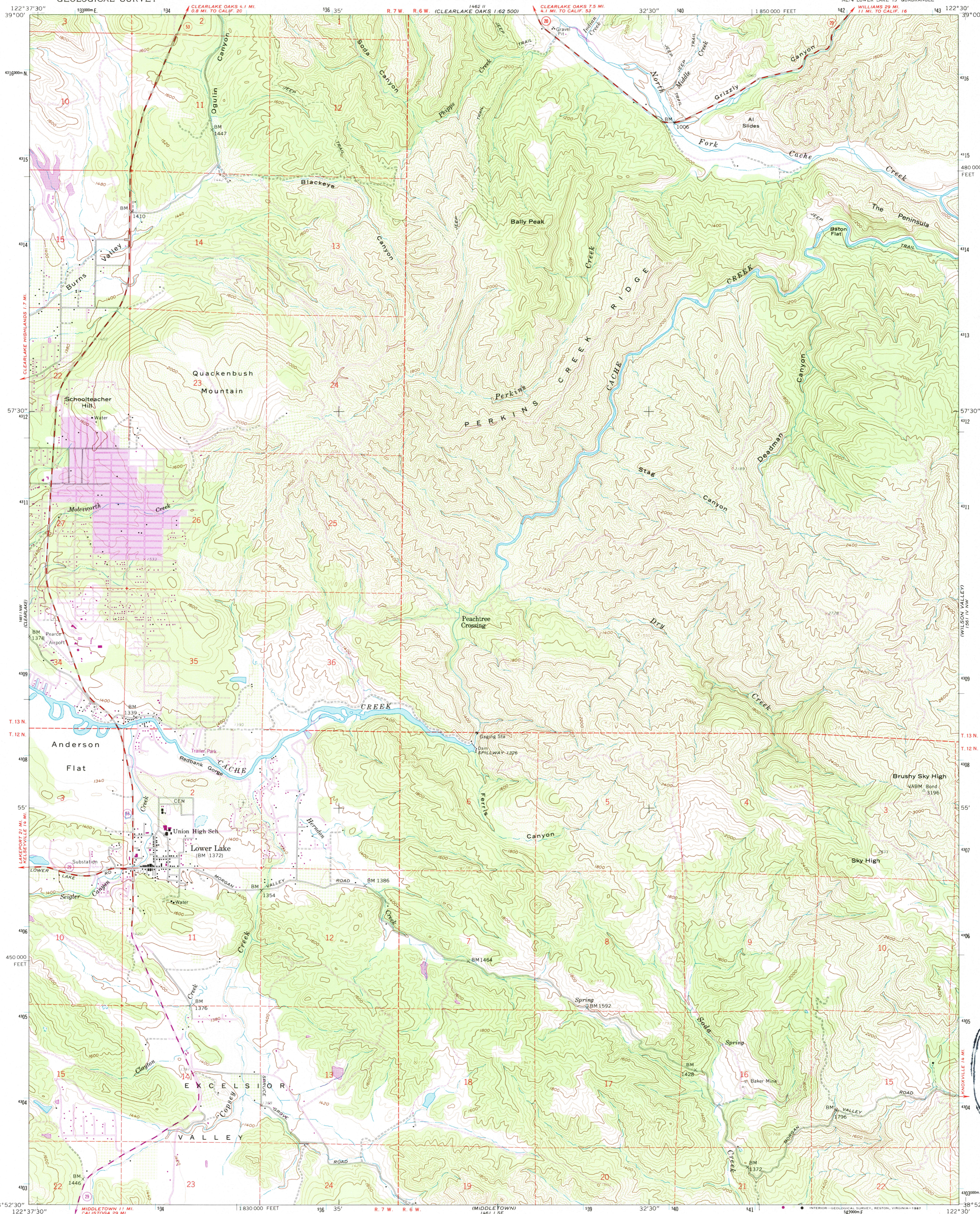


UNITED STATES
DEPARTMENT OF THE INTERIOR
GEOLOGICAL SURVEY

STATE OF CALIFORNIA
DEPARTMENT OF WATER RESOURCES

LOWER LAKE QUADRANGLE
CALIFORNIA—LAKE CO.
7.5 MINUTE SERIES (TOPOGRAPHIC)
NE 1/4 LOWER LAKE 15' QUADRANGLE



Mapped, edited, and published by the Geological Survey

Control by USGS and NOS/NOAA

Topography from aerial photographs by photogrammetric methods

Aerial photographs taken 1957. Advance field check 1958

Polyconic projection. 1927 North American datum

10,000-foot grid based on California coordinate system, zone 2

1000-meter Universal Transverse Mercator grid ticks, zone 10, shown in blue

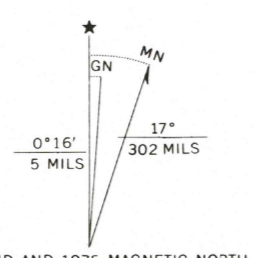
To place on the predicted North American Datum 1983

move the projection lines 16 meters north and

94 meters east as shown by dashed corner ticks

Dashed land lines indicate approximate locations

Land lines omitted in T. 13 N.-R. 6 W. because of insufficient data



SCALE 1:24,000

CONTOUR INTERVAL 40 FEET

DOTTED LINES REPRESENT 20-FOOT CONTOURS

NATIONAL GEODETIC VERTICAL DATUM OF 1929

THIS MAP COMPLIES WITH NATIONAL MAP ACCURACY STANDARDS

FOR SALE BY U. S. GEOLOGICAL SURVEY, DENVER, COLORADO 80225, OR RESTON, VIRGINIA 22092

A FOLDER DESCRIBING TOPOGRAPHIC MAPS AND SYMBOLS IS AVAILABLE ON REQUEST



ROAD CLASSIFICATION

Medium-duty Light-duty

Unimproved dirt

State Route

LOWER LAKE, CALIF.

NE 1/4 LOWER LAKE 15' QUADRANGLE

38122-H5-TF-024

1958

PHOTOREVISED 1975

DMA 1461 1 NE—SERIES V895

Revisions shown in purple compiled from aerial photographs taken 1975. This information not field checked. Purple tint indicates extension of urban areas.