

UNITED STATES
DEPARTMENT OF THE INTERIOR
GEOLOGICAL SURVEY

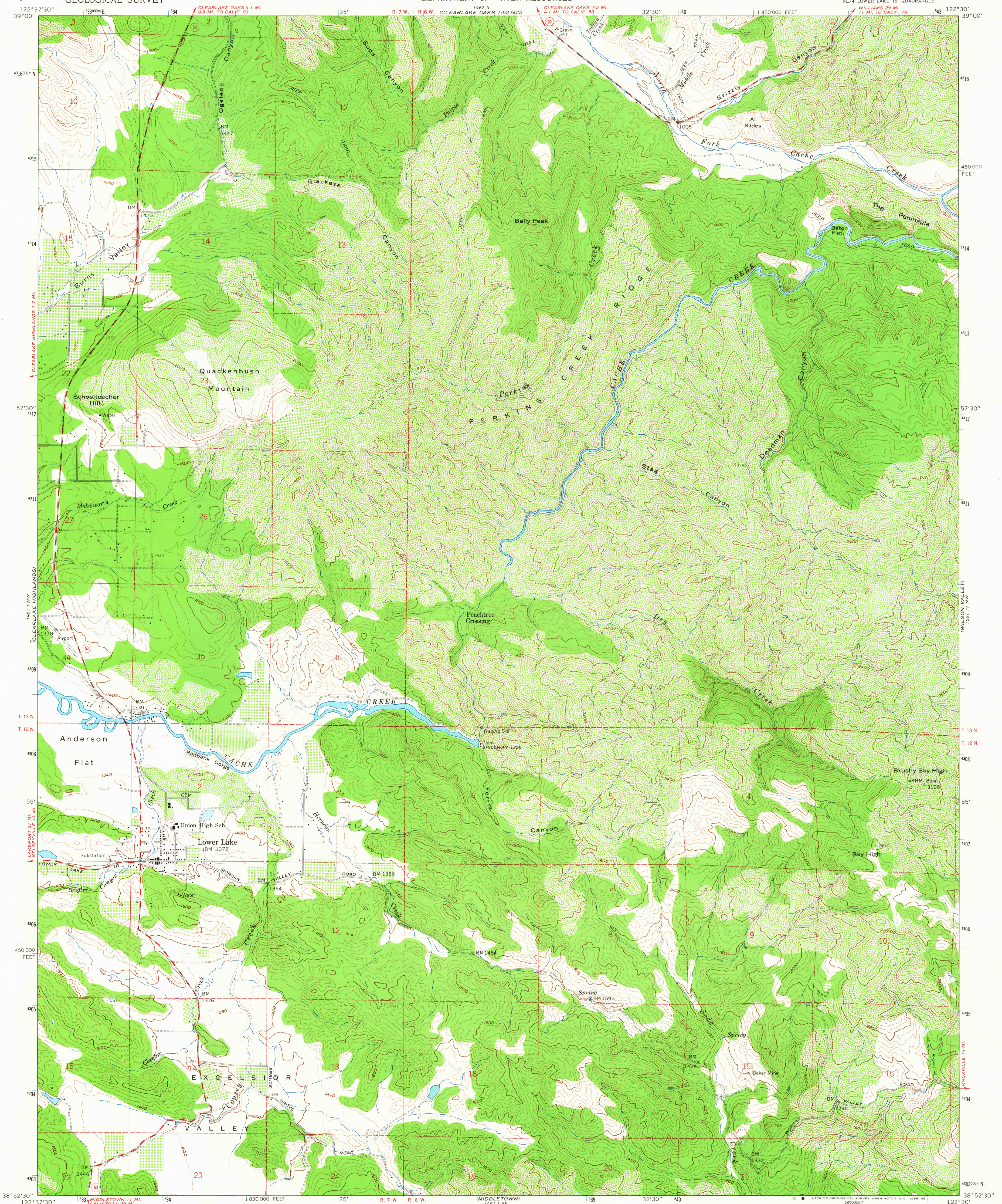
STATE OF CALIFORNIA
DEPARTMENT OF WATER RESOURCES

LOWER LAKE QUADRANGLE
CALIFORNIA—LAKE CO.
7.5 MINUTE SERIES (TOPOGRAPHIC)

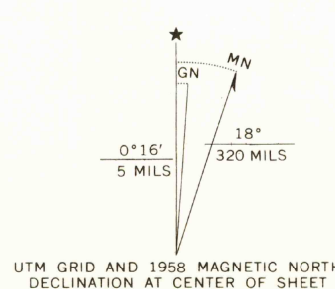
NE 1/4 LOWER LAKE 15' QUADRANGLE

WILLIAMS 29 MI.
11 MI. TO CALIF. 16

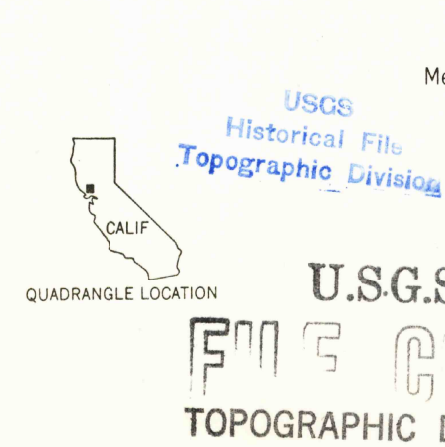
189 MI.
WILBUR 4.68 500



Mapped, edited, and published by the Geological Survey
Control by USGS and USC&GS
Topography from aerial photographs by photogrammetric methods
Aerial photographs taken 1957. Advance field check 1958
Polyconic projection. 1927 North American datum
10,000-foot grid based on California coordinate system, zone 2
1000-meter Universal Transverse Mercator grid ticks,
zone 10, shown in blue
Dashed land lines indicate approximate locations
Land lines omitted in T. 13 N.—R. 6 W. because of insufficient data



SCALE 1:24,000
CONTOUR INTERVAL 40 FEET
DOTTED LINES REPRESENT 20-FOOT CONTOURS
DATUM IS MEAN SEA LEVEL
THIS MAP COMPLIES WITH NATIONAL MAP ACCURACY STANDARDS
FOR SALE BY U.S. GEOLOGICAL SURVEY, DENVER, COLORADO 80225 OR WASHINGTON, D.C. 20242
A FOLDER DESCRIBING TOPOGRAPHIC MAPS AND SYMBOLS IS AVAILABLE ON REQUEST



ROAD CLASSIFICATION
Medium-duty — Light-duty
Unimproved dirt — State Route
LOWER LAKE, CALIF.
NE 1/4 LOWER LAKE 15' QUADRANGLE
N3852.5—W12230.7.5
1958
AMS 1461 I NE—SERIES V895

4315
JUL 6 '66