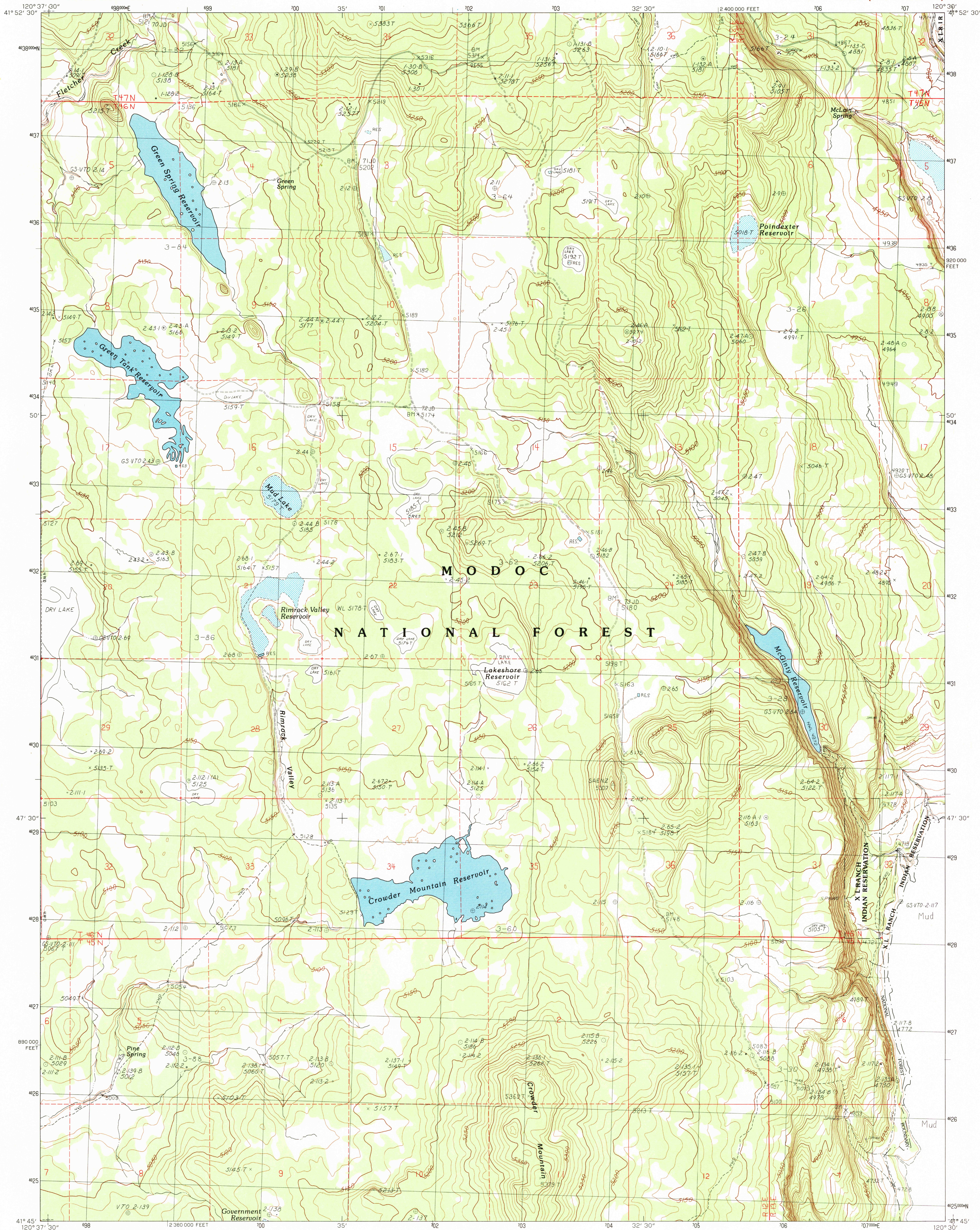


UNITED STATES
DEPARTMENT OF THE INTERIOR
GEOLOGICAL SURVEY

MC GINTY RESERVOIR QUADRANGLE
CALIFORNIA-MODOC CO.
7.5 MINUTE SERIES (TOPOGRAPHIC)



PRODUCED BY THE UNITED STATES GEOLOGICAL SURVEY
CONTROL BY... USGS AND NOS/NOAA
COMPILED FROM AERIAL PHOTOGRAPHS TAKEN... 1958
REVISED FROM AERIAL PHOTOGRAPHS TAKEN... 1985
FIELD CHECKED... 1987. MAP EDITED... 1990
PROJECTION... LAMBERT CONFORMAL CONIC
GRID: 1000-METER UNIVERSAL TRANSVERSE MERCATOR... ZONE 10
10,000-FOOT STATE GRID TICKS... CALIFORNIA, ZONE 1
UTM GRID DECLINATION... 1° 38' EAST
1990 MAGNETIC NORTH DECLINATION... 17° 00' EAST
VERTICAL DATUM... NATIONAL GEODETIC VERTICAL DATUM OF 1929
HORIZONTAL DATUM... 1927 NORTH AMERICAN DATUM
To place on the predicted North American Datum of 1983,
move the projection lines as shown by dashed corner ticks
(17 meters north and 89 meters east)
There may be private inholdings within the boundaries of any
Federal or State reservations shown on this map

PROVISIONAL MAP
Produced from original
manuscript drawings. Information
shown as of date of
field check.

THIS MAP COMPLIES WITH NATIONAL MAP ACCURACY STANDARDS
FOR SALE BY U. S. GEOLOGICAL SURVEY
DENVER, COLORADO 80225, OR RESTON, VIRGINIA 22092

| | | | |
|---|---|---|------------------------|
| 1 | 2 | 3 | 1 Beaver Mountain |
| 4 | 5 | 6 | 2 Peace Flat |
| 7 | 8 | 9 | 3 West of Willow Ranch |
| | | | 4 South Mountain |
| | | | 5 McGinty Point |
| | | | 6 Whittemore Ridge |
| | | | 7 Dead Horse Reservoir |
| | | | 8 Lauer Reservoir |

MC GINTY RESERVOIR, CALIFORNIA
PROVISIONAL EDITION 1990

41120-G5-TF-024

AUG 8 1990
RETURN TO:
U.S. HISTORICAL MAP ARCHIVES
U.S. NATIONAL CENTER
RESTON, VA 22092