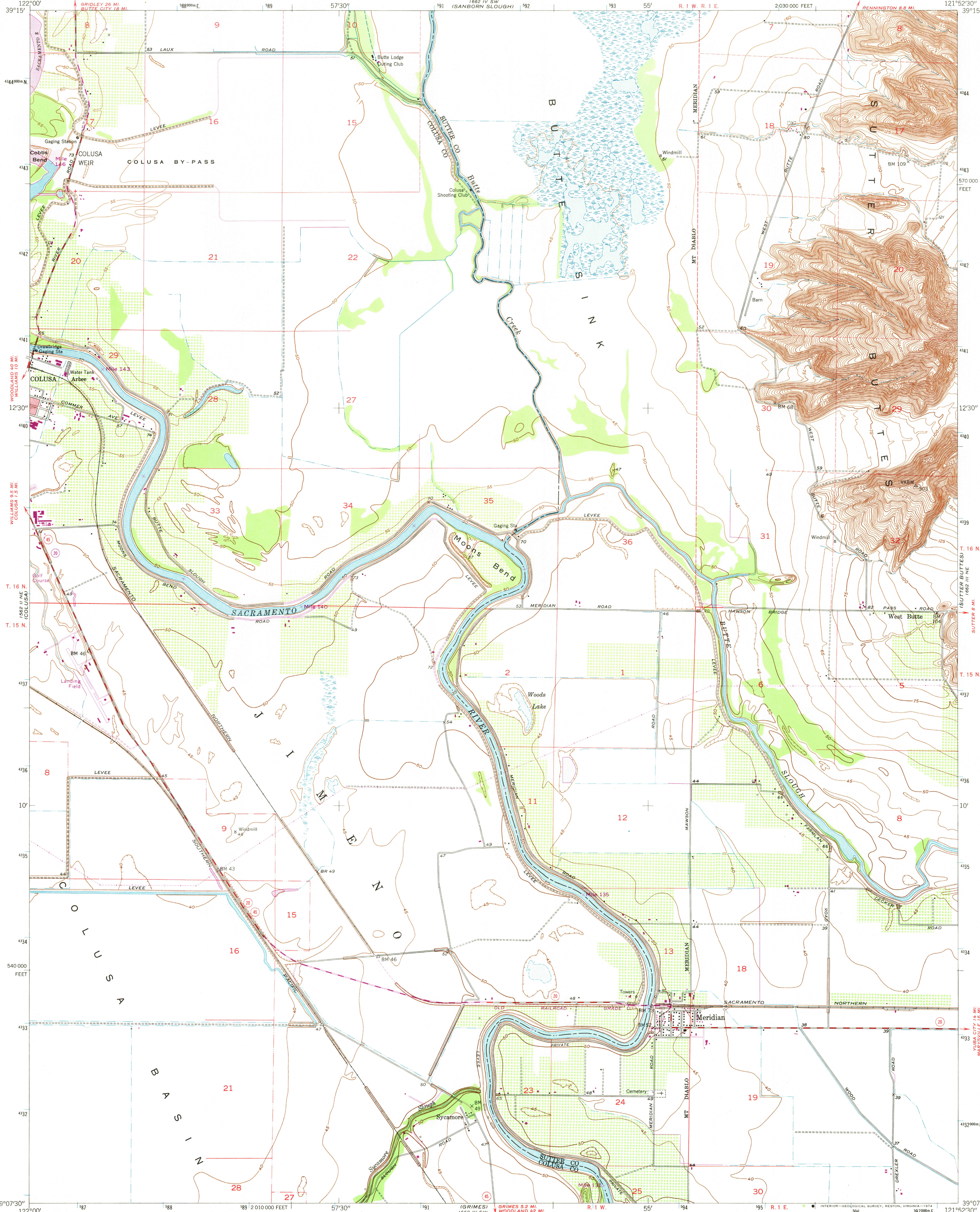
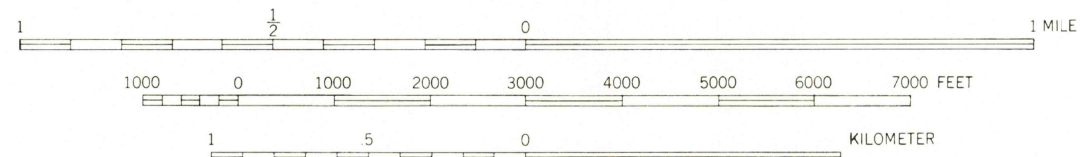
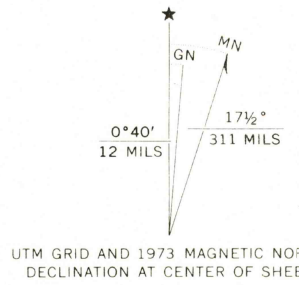


UNITED STATES
DEPARTMENT OF THE INTERIOR
GEOLOGICAL SURVEY

MERIDIAN QUADRANGLE
CALIFORNIA
7.5 MINUTE SERIES (TOPOGRAPHIC)
NW 1/4 BUTTER BUTTES 15' QUADRANGLE



Mapped, edited, and published by the Geological Survey
Control by USGS and USC&GS
Culture and drainage from photo mosaic by USBR
Topography by plane-table surveys 1952 and by Kelsh plotter methods
Aerial photographs taken 1949. Field check 1952
Polyconic projection. 1927 North American datum
10,000-foot grid based on California coordinate system, zone 2
1000-meter Universal Transverse Mercator grid ticks,
zone 10, shown in blue
Dashed land lines indicate approximate locations
Red tint indicates areas in which only landmark buildings are shown
Jimeno land grant boundary which follows west bank
of Sacramento River is not shown
Purple tint indicates extension of urban areas



CONTOUR INTERVAL 5 FEET
CONTOURS INCOMPLETE ALONG EMBANKMENTS AND DITCHES
NATIONAL GEODETIC VERTICAL DATUM OF 1929
THIS MAP COMPLIES WITH NATIONAL MAP ACCURACY STANDARDS
FOR SALE BY U.S. GEOLOGICAL SURVEY, DENVER, COLORADO 80225, OR RESTON, VIRGINIA 22092
A FOLDER DESCRIBING TOPOGRAPHIC MAPS AND SYMBOLS IS AVAILABLE ON REQUEST



USGS
Historical File
Topographic Division

MERIDIAN, CALIF.
NW 1/4 BUTTER BUTTES 15' QUADRANGLE
N3907.5—W12152.5/7.5
1952
PHOTOREVISED 1973
AMS 1662 III NW—SERIES V895

DEC 19 1974