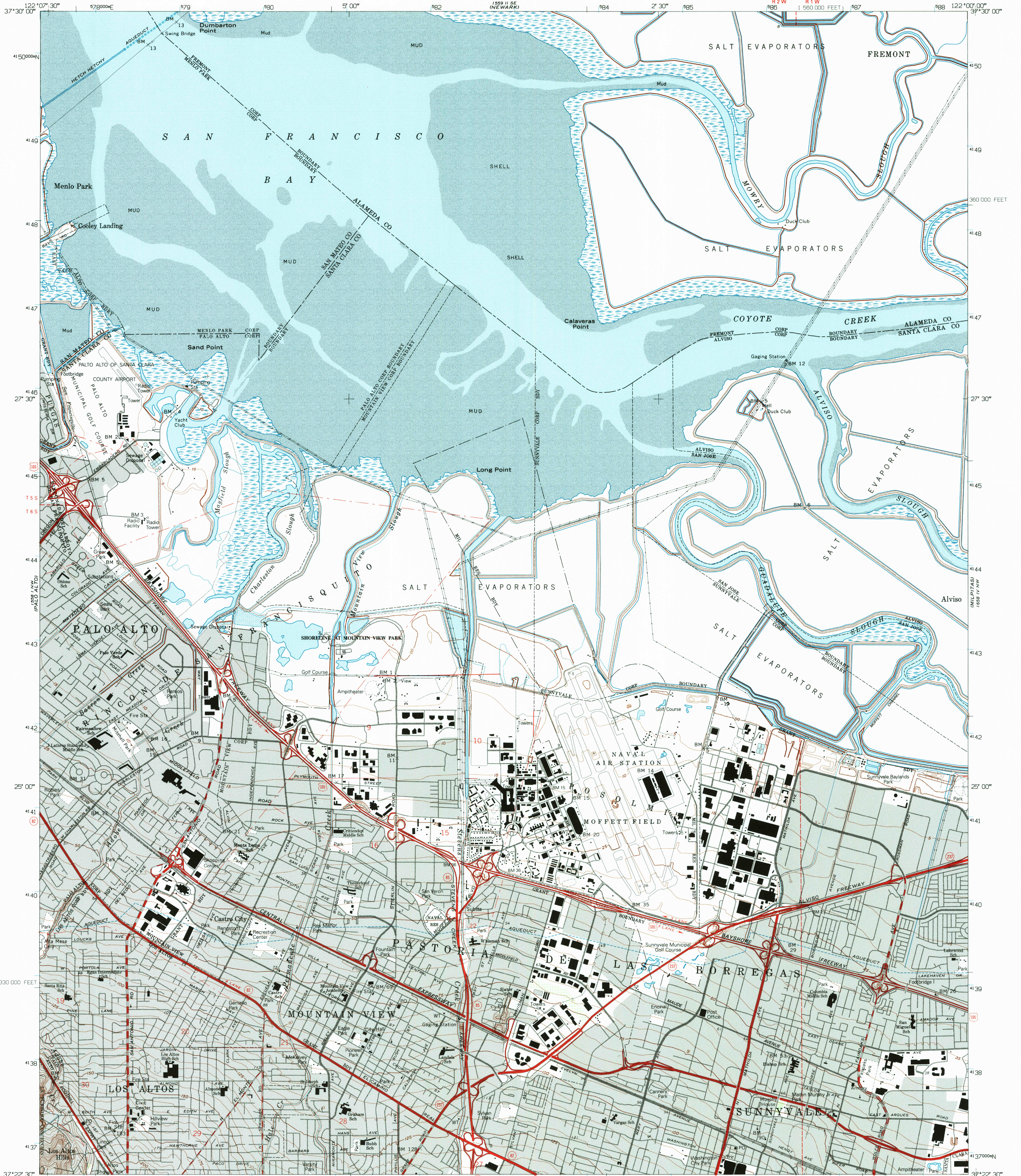
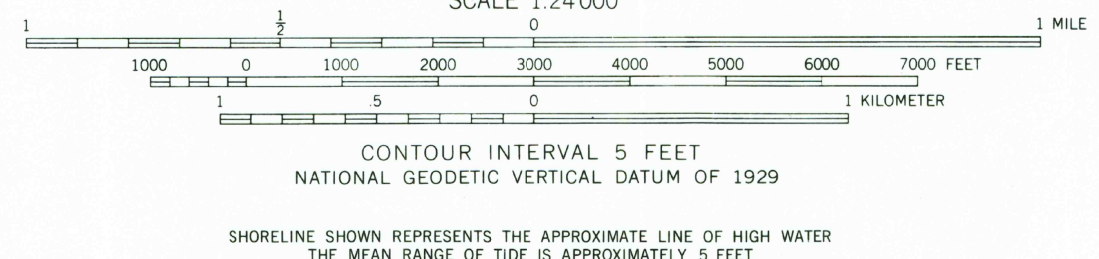
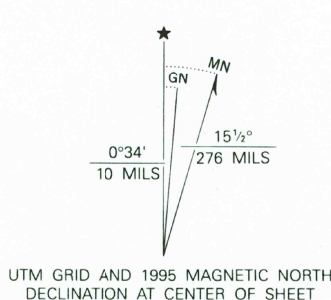


UNITED STATES  
DEPARTMENT OF THE INTERIOR  
GEOLOGICAL SURVEY

MOUNTAIN VIEW QUADRANGLE  
CALIFORNIA  
7.5 MINUTE SERIES (TOPOGRAPHIC)



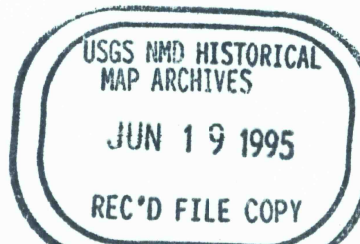
Produced by the United States Geological Survey  
Control by USGS and NOS/NOAA  
Compiled from imagery dated 1948. Revised from imagery dated 1991. PLSS and survey control current as of 1961. Map edited 1995. Contours and land elevations have not been revised and may conflict with other content.  
North American Datum of 1927 (NAD 27). Projection and blue 1000-meter Universal Transverse Mercator ticks, zone 10 10000-foot ticks. California Coordinate System, zone 3.  
North American Datum of 1983 (NAD 83) is shown by dashed corner ticks. The values of the shift between NAD 27 and NAD 83 for 7.5-minute intersections are obtainable from National Geodetic Survey NADCON software.  
There may be private inholdings within the boundaries of the National or State reservations shown on this map.  
Gray tint indicates areas in which only landmark buildings are shown.  
This map lies within a subsidence area.



THIS MAP COMPLIES WITH NATIONAL MAP ACCURACY STANDARDS  
FOR SALE BY U. S. GEOLOGICAL SURVEY, DENVER, COLORADO 80225, OR RESTON, VIRGINIA 22092  
A FOLDER DESCRIBING TOPOGRAPHIC MAPS AND SYMBOLS IS AVAILABLE ON REQUEST



ROAD CLASSIFICATION	
Primary highway, light-duty road, hard or improved surface	Unimproved road
Secondary highway, hard surface	Interstate Route
Interstate Route	U. S. Route
U. S. Route	State Route



MOUNTAIN VIEW, CA  
37122-D1-TF-024

1991  
DMA 1558 I NE-SERIES V895