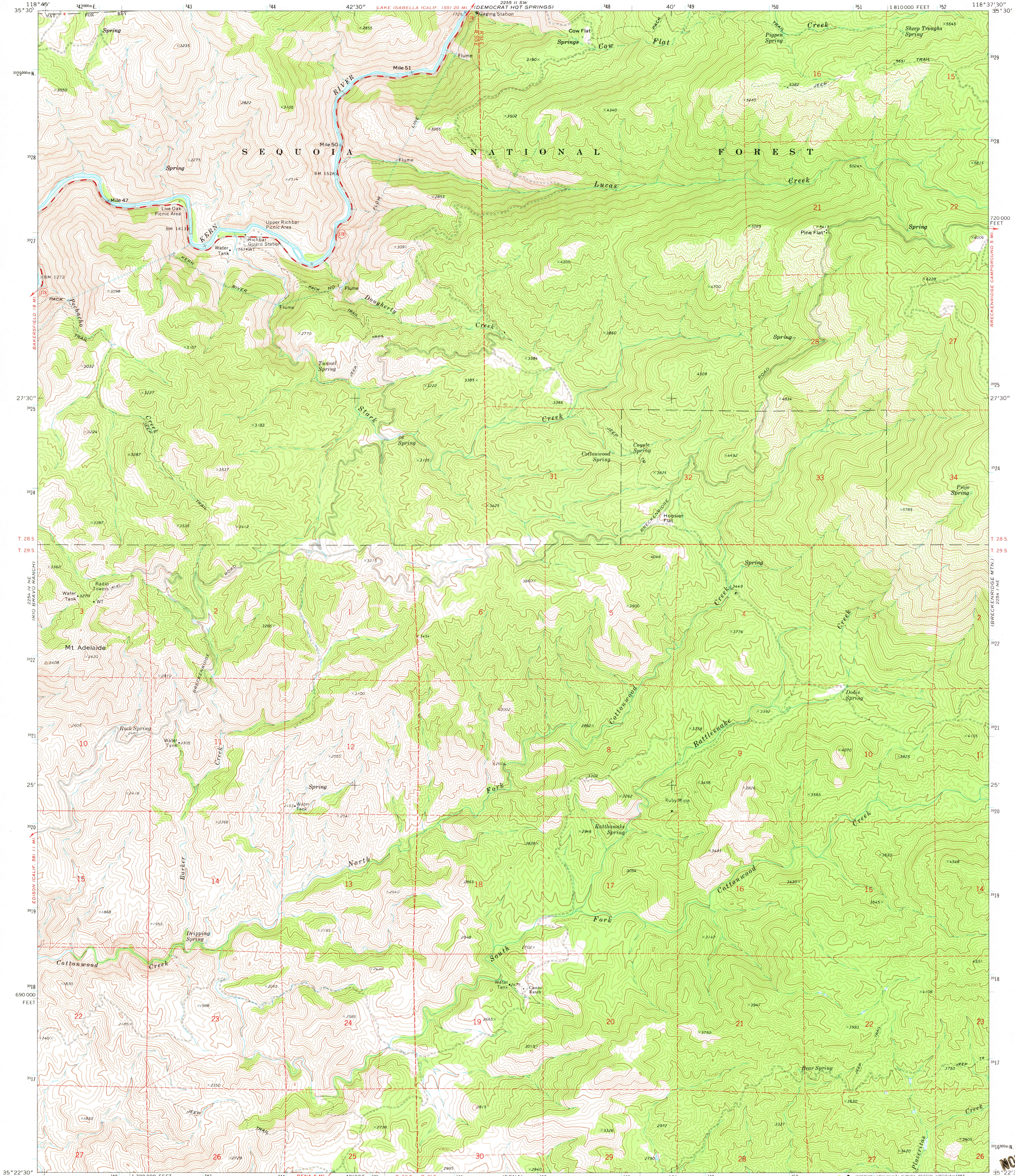


UNITED STATES
DEPARTMENT OF THE INTERIOR
GEOLOGICAL SURVEY

MT. ADELAIDE QUADRANGLE
CALIFORNIA—KERN CO.
7.5 MINUTE SERIES (TOPOGRAPHIC)
NW 4 BRECKENRIDGE MTN. 15' QUADRANGLE



Mapped, edited, and published by the Geological Survey

Control by USGS and NOS/NOAA

Topography by photogrammetric methods from aerial photographs taken 1970. Field checked 1972

Projection and 10,000-foot grid ticks: California coordinate system, zone 5 (Lambert conformal conic)

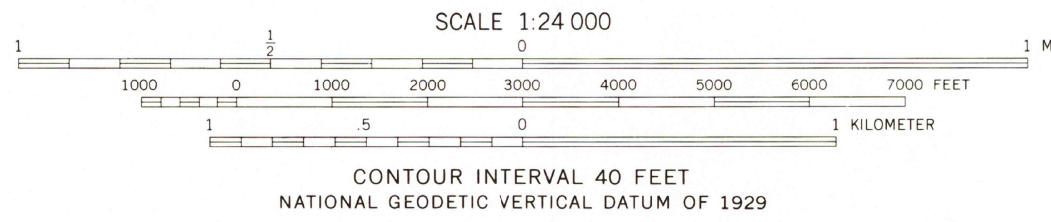
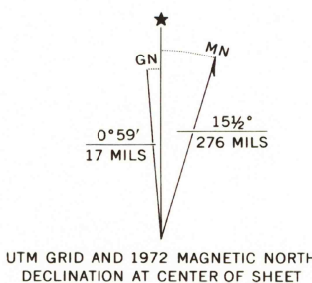
1000-meter Universal Transverse Mercator grid ticks, zone 11, shown in blue. 1927 North American datum

To place on the predicted North American Datum 1983 move the projection lines 6 meters north and 85 meters east as shown by dashed corner ticks

Fine red dashed lines indicate selected fence lines

Certain land lines are omitted because of insufficient data

There may be private inholdings within the boundaries of the National or State reservations shown on this map



ROAD CLASSIFICATION	
Primary highway, hard surface	Light-duty road, hard or improved surface
Secondary highway, hard surface	Unimproved road
Interstate Route	U. S. Route
	State Route

MT. ADELAIDE, CALIF.
NW 4 BRECKENRIDGE MTN. 15' QUADRANGLE
N3522.5—W11837.5/7.5

1972

DMA 2254 I NW—SERIES V895

THIS MAP COMPLIES WITH NATIONAL MAP ACCURACY STANDARDS
FOR SALE BY U. S. GEOLOGICAL SURVEY, DENVER, COLORADO 80225 OR RESTON, VIRGINIA 22092
A FOLDER DESCRIBING TOPOGRAPHIC MAPS AND SYMBOLS IS AVAILABLE ON REQUEST

NOV 17 1992
OILER PEAK
2254 I SE