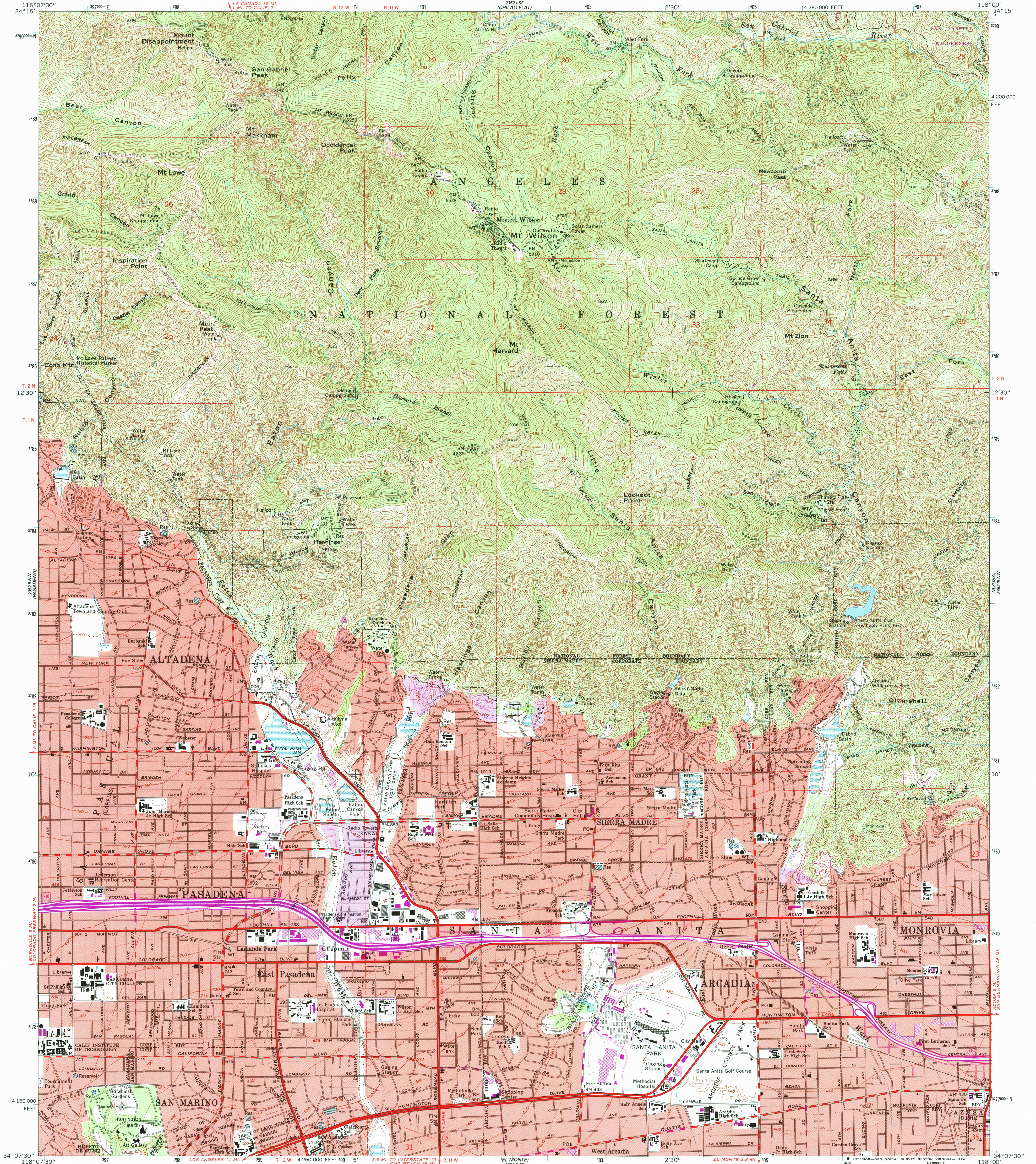


UNITED STATES
DEPARTMENT OF THE INTERIOR
GEOLOGICAL SURVEY

MT. WILSON QUADRANGLE
CALIFORNIA-LOS ANGELES CO.
7.5 MINUTE SERIES (TOPOGRAPHIC)



Produced by the United States Geological Survey in cooperation with California Department of Water Resources
Control by USGS and NOS/NOAA and Los Angeles Co
Compiled from aerial photographs taken 1964. Field checked 1966
North American Datum of 1927 (NAD 27). Projection and 10000-foot ticks: California Coordinate System, zone 7 (Lambert Conformal Conic)
Blue 1000-meter Universal Transverse Mercator ticks, zone 11
North American Datum of 1983 (NAD 83) is shown by dashed corner ticks. The values of the shift between NAD 27 and NAD 83 for 7.5-minute intersections are obtainable from National Geodetic Survey NADCON software
There may be private inholdings within the boundaries of the National or State reservations shown on this map
Red tint indicates areas in which only landmark buildings are shown
Where omitted, land lines have not been established

Areas covered by dashed light-blue pattern are subject to controlled inundation
Photinspected from 1991 source; no major culture or drainage changes observed. Boundaries and names revised 1994

THIS MAP COMPLIES WITH NATIONAL MAP ACCURACY STANDARDS
FOR SALE BY U. S. GEOLOGICAL SURVEY, DENVER, COLORADO 80225, OR RESTON, VIRGINIA 22092
A FOLDER DESCRIBING TOPOGRAPHIC MAPS AND SYMBOLS IS AVAILABLE ON REQUEST

SCALE 1:24 000
CONTOUR INTERVAL 40 FEET
SUPPLEMENTARY CONTOUR INTERVAL 20 FEET
NATIONAL GEODETIC VERTICAL DATUM OF 1929

Revisions shown in purple and woodland compiled from aerial photographs taken 1989 and other source data. Partial field check by U.S. Forest Service. Map edited 1994.
Purple tint indicates extension of urban areas

ROAD CLASSIFICATION
Heavy-duty ——— Light-duty ———
Medium-duty ——— Unimproved dirt ———
U.S. Route ——— State Route ———
Interstate Route ———

USGS HISTORICAL
MAP ARCHIVES
NOV 21 1994
REC'D FILE COPY

MT. WILSON, CA
34118-B1-TF-024

1966
PHOTOREVISED 1988
MINOR REVISION 1994
DMA 2352 II NE-SERIES V895