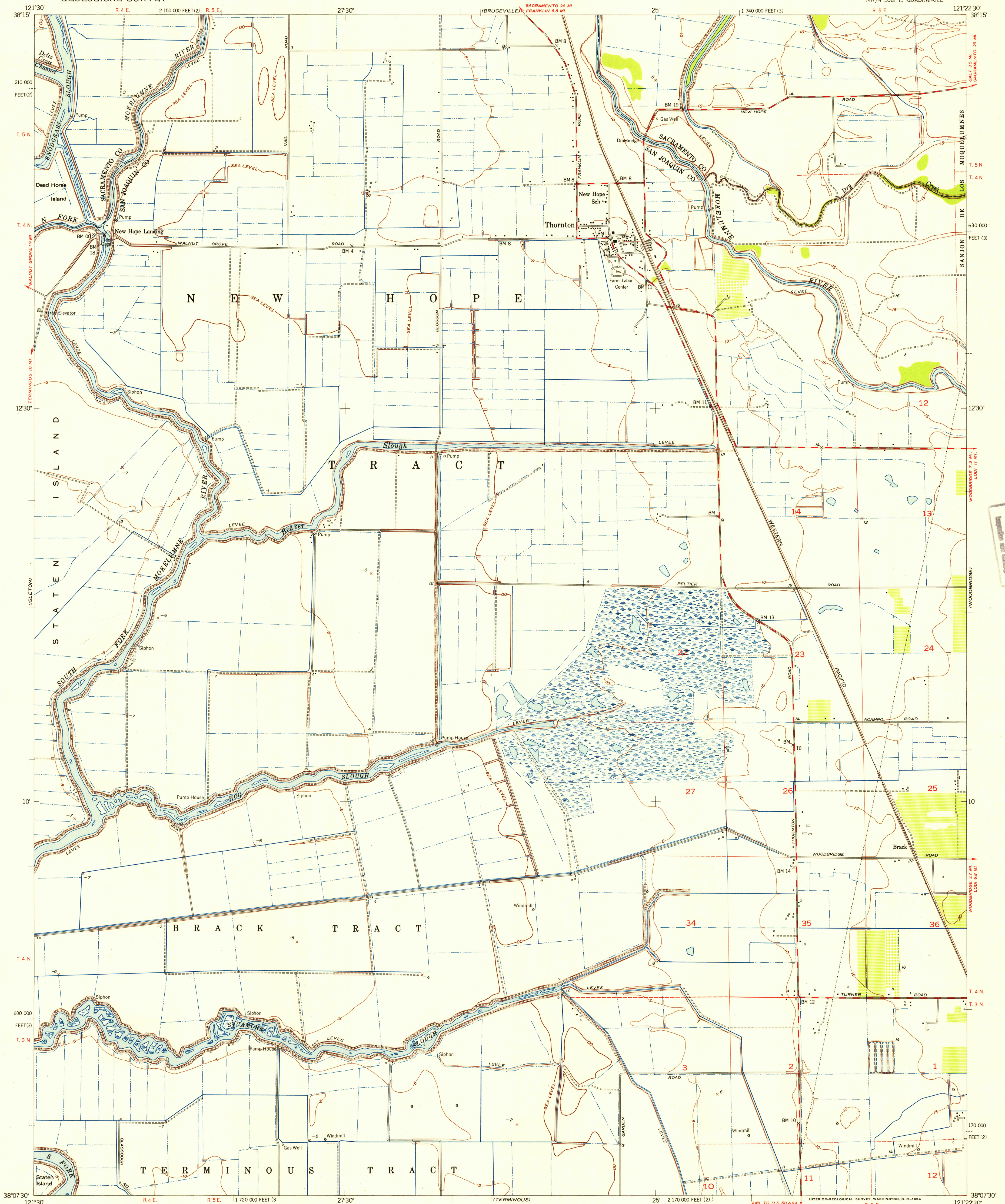


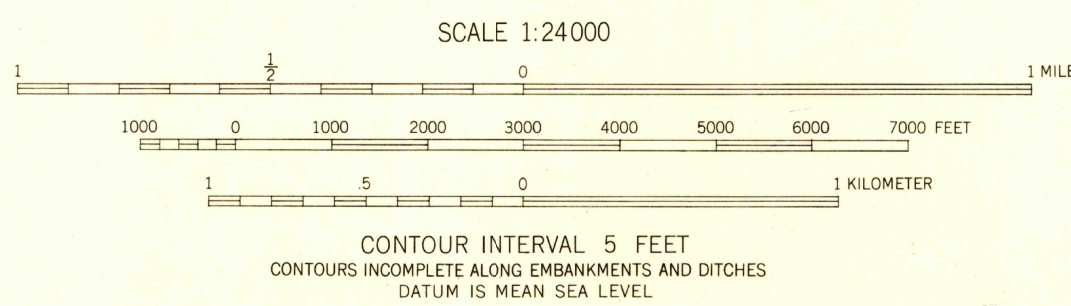
UNITED STATES
DEPARTMENT OF THE INTERIOR
GEOLOGICAL SURVEY

NEW HOPE QUADRANGLE
CALIFORNIA
7.5 MINUTE SERIES (TOPOGRAPHIC)
NW 1/4 LOD 15 QUADRANGLE



Mapped, edited, and published by the Geological Survey
Control by USGS and USC&GS
Mapped 1907-1908. Remapped 1952
Culture and drainage by USC&GS, and from photo mosaic
by USBR. Aerial photographs taken 1931 and 1949
Topography by USGS from plane-table surveys 1952
Polyconic projection, 1927 North American datum
10,000-foot grid based on California coordinate system, zone 2 and 3
Dashed land lines indicate approximate locations
The positions of township and range numbers in unsectioned
areas are approximate

TRUE NORTH
MAGNETIC NORTH
APPROXIMATE MEAN
DECLINATION, 1952



THIS MAP COMPLIES WITH NATIONAL MAP ACCURACY STANDARDS
FOR SALE BY U. S. GEOLOGICAL SURVEY, FEDERAL CENTER, DENVER, COLORADO OR WASHINGTON 25, D. C.
A FOLDER DESCRIBING TOPOGRAPHIC MAPS AND SYMBOLS IS AVAILABLE ON REQUEST

ROAD CLASSIFICATION
Heavy-duty 4 LANE 16 LANE Light-duty
Medium-duty 4 LANE 16 LANE Unimproved dirt
U. S. Route State Route



USGS
Historical File
Topographic Division
1:250,000 Scale

NEW HOPE, CALIF.
NW 1/4 LOD 15 QUADRANGLE
N3807.5-W12122.5/7.5
1952

FEB 10 1954