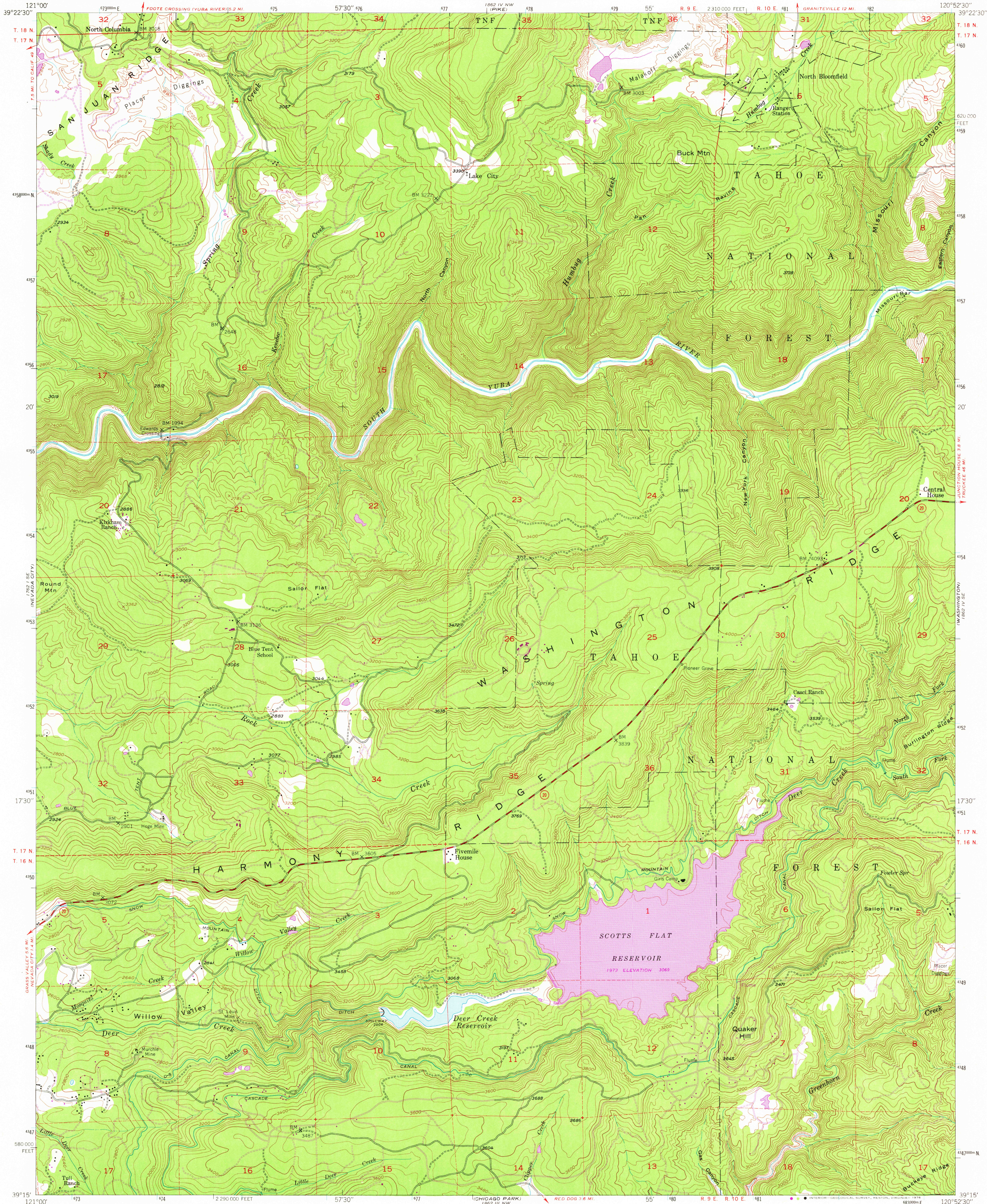


UNITED STATES  
DEPARTMENT OF THE INTERIOR  
GEOLOGICAL SURVEY

STATE OF CALIFORNIA  
DEPARTMENT OF WATER RESOURCES

NORTH BLOOMFIELD QUADRANGLE  
CALIFORNIA-NEVADA CO.  
7.5 MINUTE SERIES (TOPOGRAPHIC)  
SW 4 ALLEGANY 15' QUADRANGLE



Mapped, edited, and published by the Geological Survey  
Control by USGS

Topography from aerial photographs by multiplex methods  
Aerial photographs taken 1946. Field check 1949

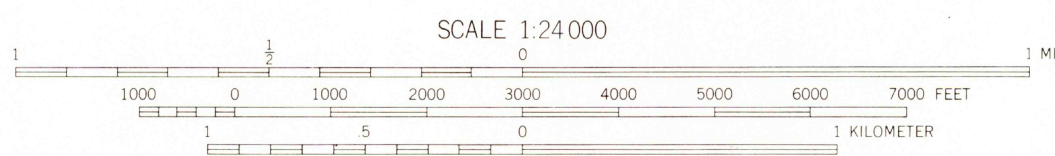
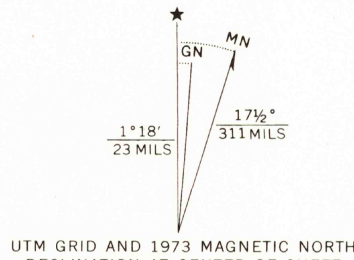
Polyconic projection. 1927 North American datum  
10,000-foot grid based on California coordinate system,  
zone 2

Unchecked elevations are shown in brown

Dashed land lines indicate approximate location

1000-meter Universal Transverse Mercator grid ticks,  
zone 10, shown in blue

Revisions shown in purple compiled from aerial photographs  
taken 1973. This information not field checked



CONTOUR INTERVAL 40 FEET  
NATIONAL GEODETIC VERTICAL DATUM OF 1929



ROAD CLASSIFICATION  
Heavy-duty double line Light duty single line  
Medium-duty double line Unimproved dirt dashed line  
U. S. Route circle with number State Route circle with number

NORTH BLOOMFIELD, CALIF.  
SW 4 ALLEGANY 15' QUADRANGLE  
N3915-W12052.5/7.5

U. S. Geological Survey  
Historical File  
Topographic Division

1949  
PHOTOREVISED 1973  
AMS 1862 IV SW-SERIES V895

MAY 20 1976