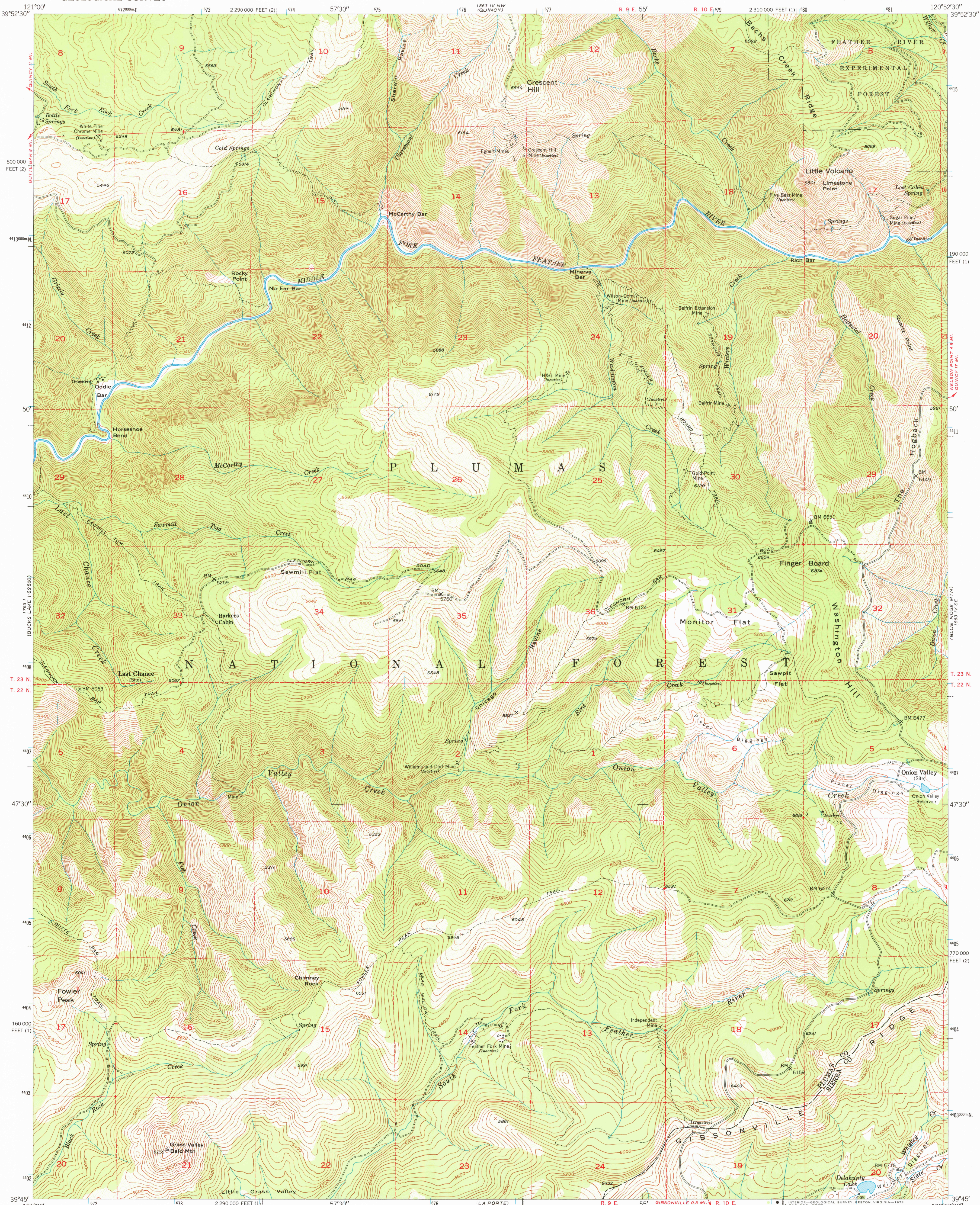


UNITED STATES
DEPARTMENT OF THE INTERIOR
GEOLOGICAL SURVEY

ONION VALLEY QUADRANGLE
CALIFORNIA
7.5 MINUTE SERIES (TOPOGRAPHIC)
SW 4 QUINCY 15' QUADRANGLE



Mapped, edited, and published by the Geological Survey
Control by USGS and USC&GS

Topography from aerial photographs by multiplex methods
Aerial photographs taken 1946. Field check 1950

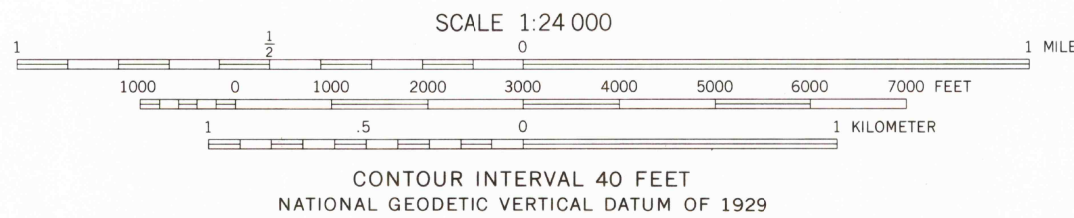
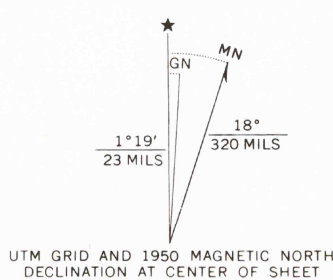
Polyconic projection. 1927 North American datum
10,000-foot grid based on California coordinate system,
zones 1 and 2

Dashed land lines indicate approximate location
Unchecked elevations are shown in brown

1000-meter Universal Transverse Mercator grid ticks
zone 10, shown in blue

Map photoinspected 1973

No major culture or drainage changes observed



THIS MAP COMPLIES WITH NATIONAL MAP ACCURACY STANDARDS
FOR SALE BY U.S. GEOLOGICAL SURVEY, DENVER, COLORADO 80225, OR RESTON, VIRGINIA 22092
A FOLDER DESCRIBING TOPOGRAPHIC MAPS AND SYMBOLS IS AVAILABLE ON REQUEST

ROAD CLASSIFICATION
Heavy-duty... Lane 16 Lane Light-duty...
Medium-duty... Lane 16 Lane Unimproved dirt...
U.S. Route State Route

USGS
Historical File
Topographic Division

ONION VALLEY, CALIF.
SW 4 QUINCY 15' QUADRANGLE
N3945-W10552.7.5

1950
PHOTOINSPECTED 1973
AMS 1863 IV SW-SERIES V895

APR 06 1978

3500