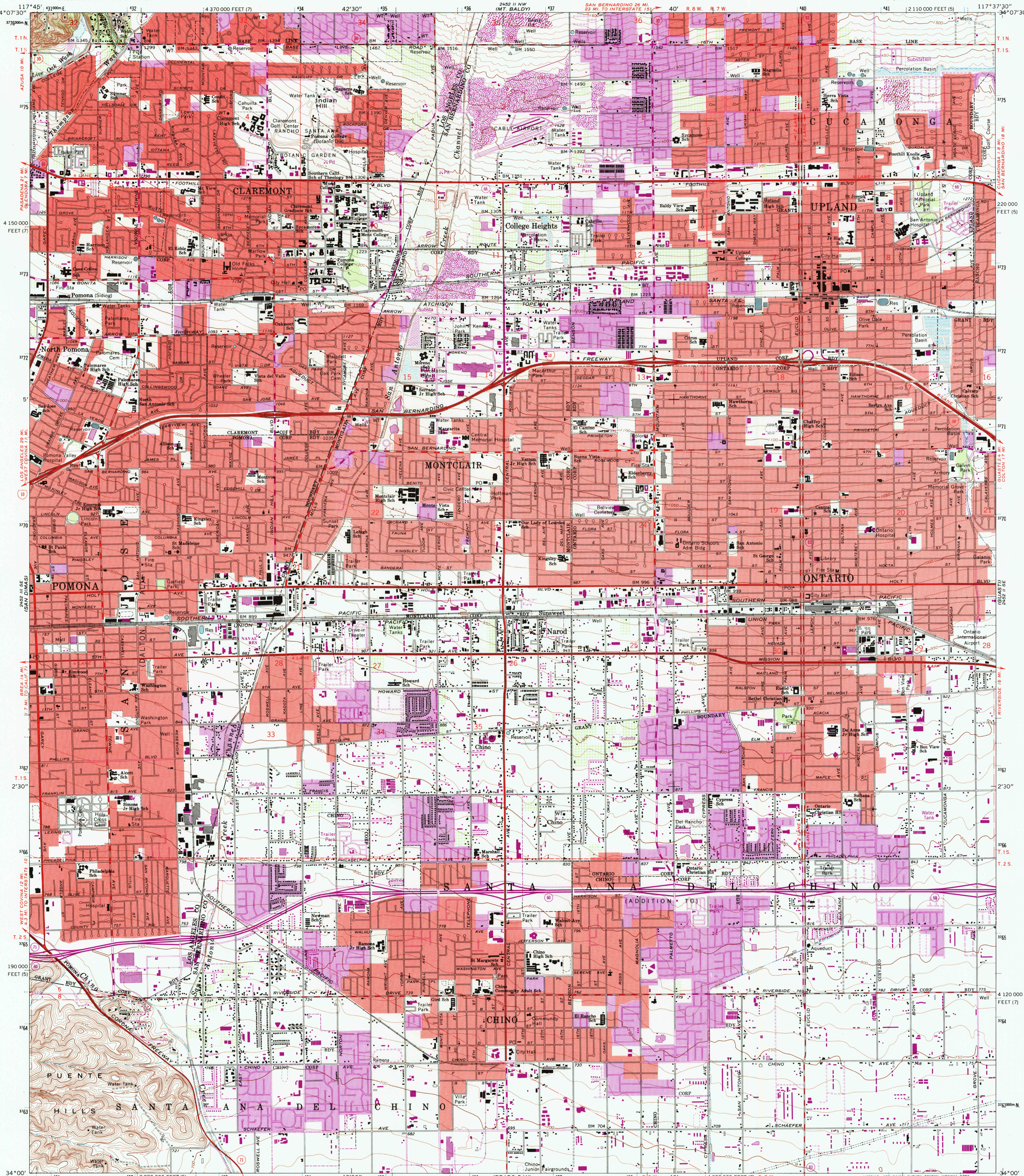
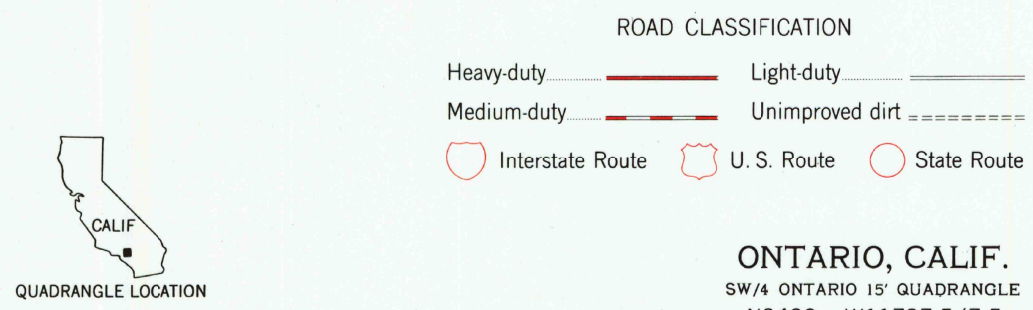
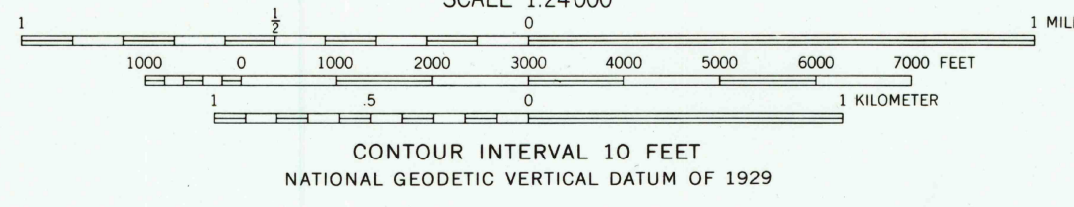
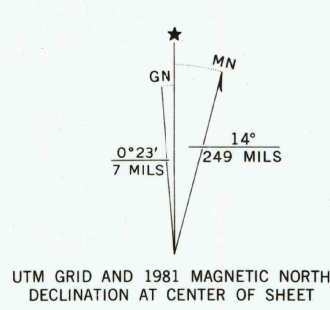


UNITED STATES
DEPARTMENT OF THE INTERIOR
GEOLOGICAL SURVEY

ONTARIO QUADRANGLE
CALIFORNIA
7.5 MINUTE SERIES (TOPOGRAPHIC)
SW/4 ONTARIO 15' QUADRANGLE



Maped, edited, and published by the Geological Survey
Revised in cooperation with California Department of
Water Resources
Control by USGS, NOS/NOAA, and Los Angeles County
Topography by planetable surveys 1925, 1933-34 and 1939
Planimetry revised by photogrammetric methods from aerial
photographs taken 1966. Field checked 1967
Polyconic projection. 10,000-foot grid ticks based on
California coordinate system, zones 5 and 7. 1000-meter
Universal Transverse Mercator grid ticks, zone 11, shown in
blue. 1927 North American Datum. To place on the
predicted North American Datum 1983 move the projection
lines 2 meters north and 84 meters east as shown by
dashed corner ticks
Red tint indicates areas in which only landmark buildings are shown
Fine red dashed lines indicate selected fence lines
There may be private inholdings within the boundaries of the
National or State reservations shown on this map
Revisions shown in purple and woodland compiled from
aerial photographs taken 1978 and other sources. This
information not field checked. Map edited 1981
Purple tint indicates extension of urban areas



THIS MAP COMPLIES WITH MAP ACCURACY STANDARDS
FOR SALE BY U.S. GEOLOGICAL SURVEY, P.O. BOX 25286, DENVER, COLORADO 80225
A FOLDER DESCRIBING TOPOGRAPHIC MAPS AND SYMBOLS IS AVAILABLE ON REQUEST

ONTARIO, CALIF.
SW/4 ONTARIO 15' QUADRANGLE
N3400-W11737.5/7.5
1967
PHOTOREVISED 1981
DMA 2452 II SW-SERIES V895

