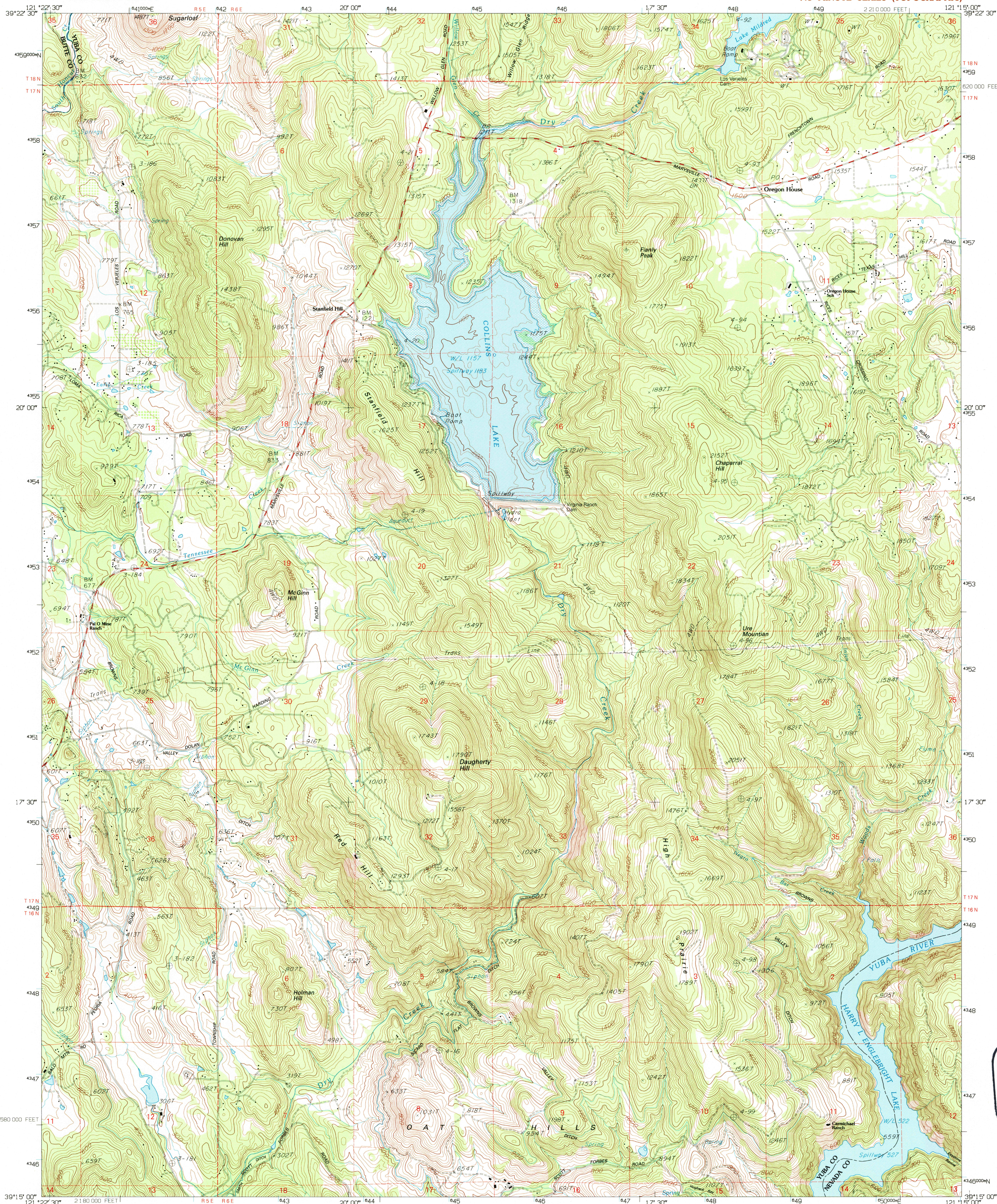


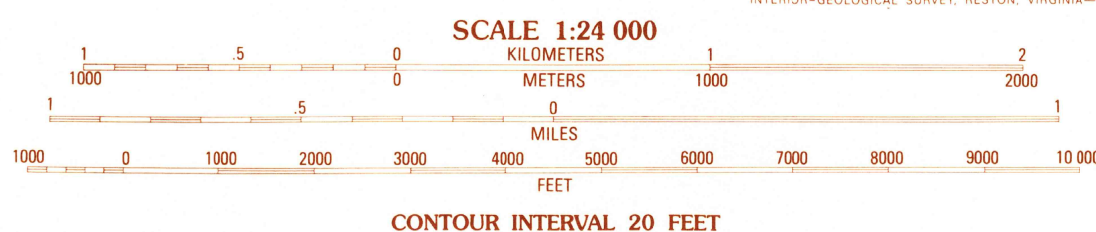
UNITED STATES
DEPARTMENT OF THE INTERIOR
GEOLOGICAL SURVEY

OREGON HOUSE QUADRANGLE
CALIFORNIA
7.5 MINUTE SERIES (TOPOGRAPHIC)



PRODUCED BY THE UNITED STATES GEOLOGICAL SURVEY
CONTROL BY USGS, NOS/NOAA
COMPILED FROM AERIAL PHOTOGRAPHS TAKEN 1987
FIELD CHECKED 1990, MAP EDITED 1995
PROJECTION LAMBERT CONFORMAL CONIC
BLUE 1000-METER UNIVERSAL TRANSVERSE MERCATOR TICS, ZONE 10
10 000-FOOT STATE GRID TICS, CALIFORNIA, ZONE 2
UTM GRID DECLINATION 1941 EAST
1994 MAGNETIC NORTH DECLINATION 16° EAST
VERTICAL DATUM NATIONAL GEODETIC VERTICAL DATUM OF 1929
HORIZONTAL DATUM NORTH AMERICAN DATUM OF 1927 (NAD 27)
North American Datum of 1983 (NAD 83) is shown by dashed
corner ticks. The values of the shift between NAD 27 and NAD
83 for 7.5-minute intersections are obtainable from National
Geodetic Survey NADCON software.
No distinction made between houses, farms, and other buildings

PROVISIONAL MAP
Produced from original
manuscript drawings, infor-
mation shown as of date of
photography.



THIS MAP COMPLIES WITH NATIONAL MAP ACCURACY STANDARDS
FOR SALE BY U.S. GEOLOGICAL SURVEY
DENVER, COLORADO 80225 OR RESTON, VIRGINIA 22092
A FOLDER DESCRIBING TOPOGRAPHIC MAPS AND SYMBOLS IS AVAILABLE ON REQUEST

1	2	3	1 Bangor
			2 Rackerby
			3 Challenge
4		5	4 Loma Rica
			5 French Corral
			6 Browns Valley
6	7	8	7 Marysville
			8 Rough and Ready

ROAD CLASSIFICATION
Primary highway, hard surface
Secondary highway, hard surface
Unimproved road
Interstate Route
U. S. Route
State Route

OREGON HOUSE, CA
PROVISIONAL EDITION 1995

39121-C3-TF-024

