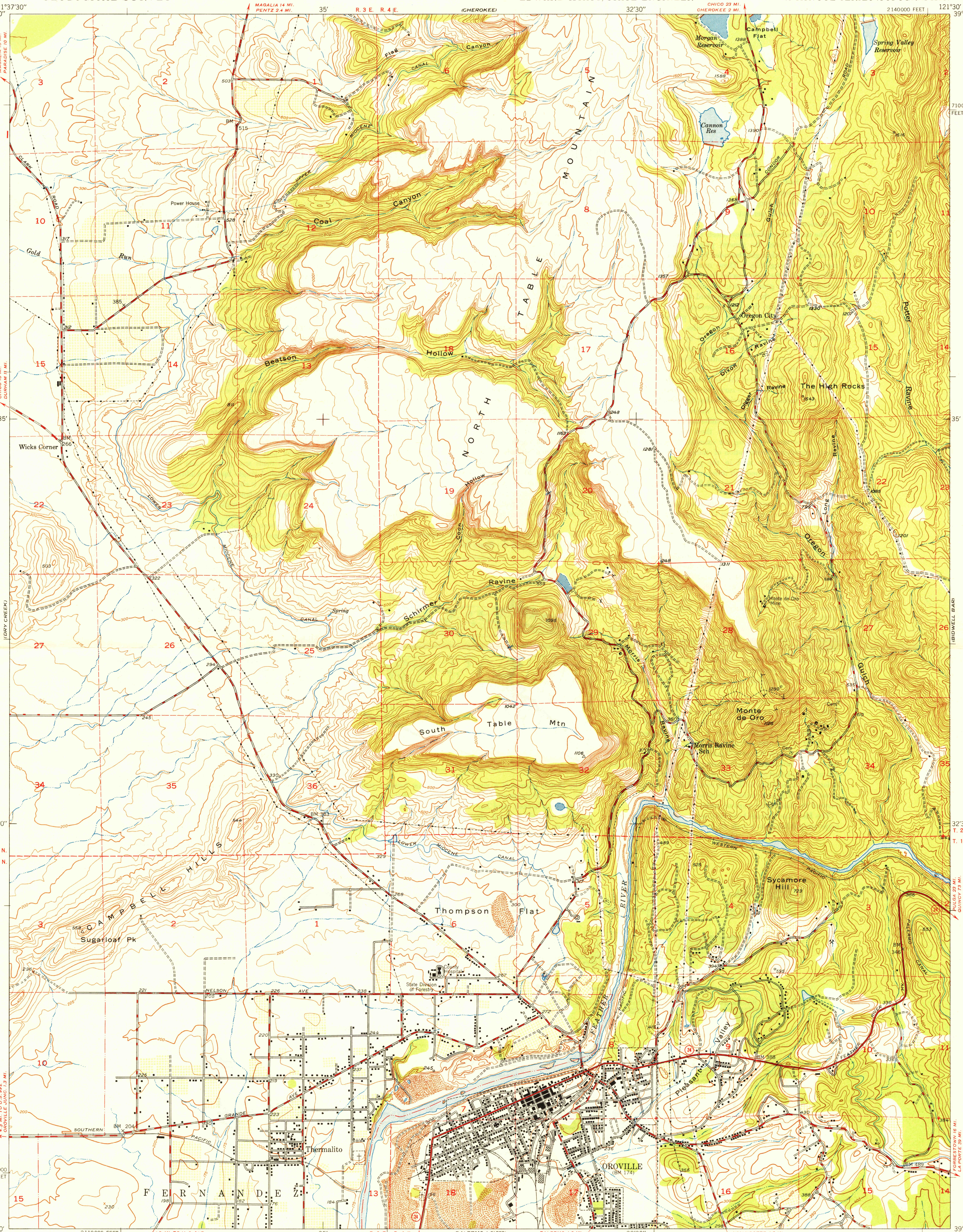
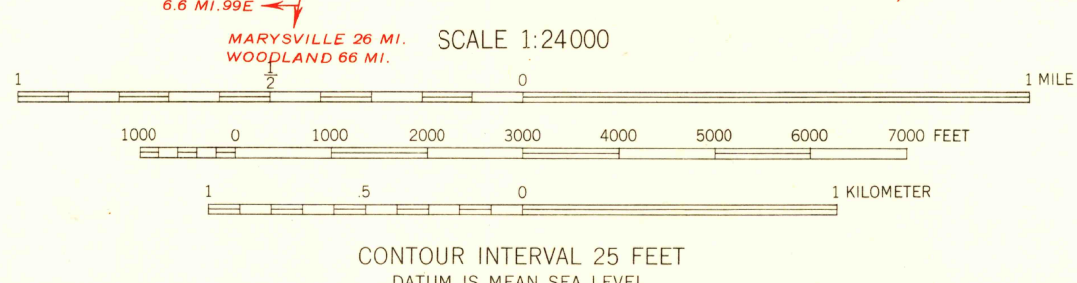


U. S. G. S.
FILE COPY
Inspection and Editing



Mapped by Fairchild Aerial Surveys, Inc.
Field inspected, edited, and published by the Geological Survey
Control by Fairchild Aerial Surveys, Inc.,
USGS, and USC&GS
Topography from aerial photographs by stereoplanigraph methods
Aerial photographs taken 1946-1947. Field check 1947
Polyconic projection. 1927 North American datum
10,000-foot grid based on California coordinate system,
zone 2
Dashed land lines indicate approximate location
Fairchild triangulation shown by unlabeled located object symbol



USGS
Historical File
Topographic Division

ROAD CLASSIFICATION
HARD-SURFACE ALL WEATHER ROADS DRY WEATHER ROADS
Heavy-duty. ———— 4 LANE LANE Improved dirt. ————
Medium-duty. ———— 4 LANE LANE Unimproved dirt. ————
Loose-surface, graded, or narrow hard-surface. ————
U. S. Route ———— State Route ————

OROVILLE, CALIF.
N3930-W12130/7.5

U. S. G. S.
FILE COPY
Inspection and Editing