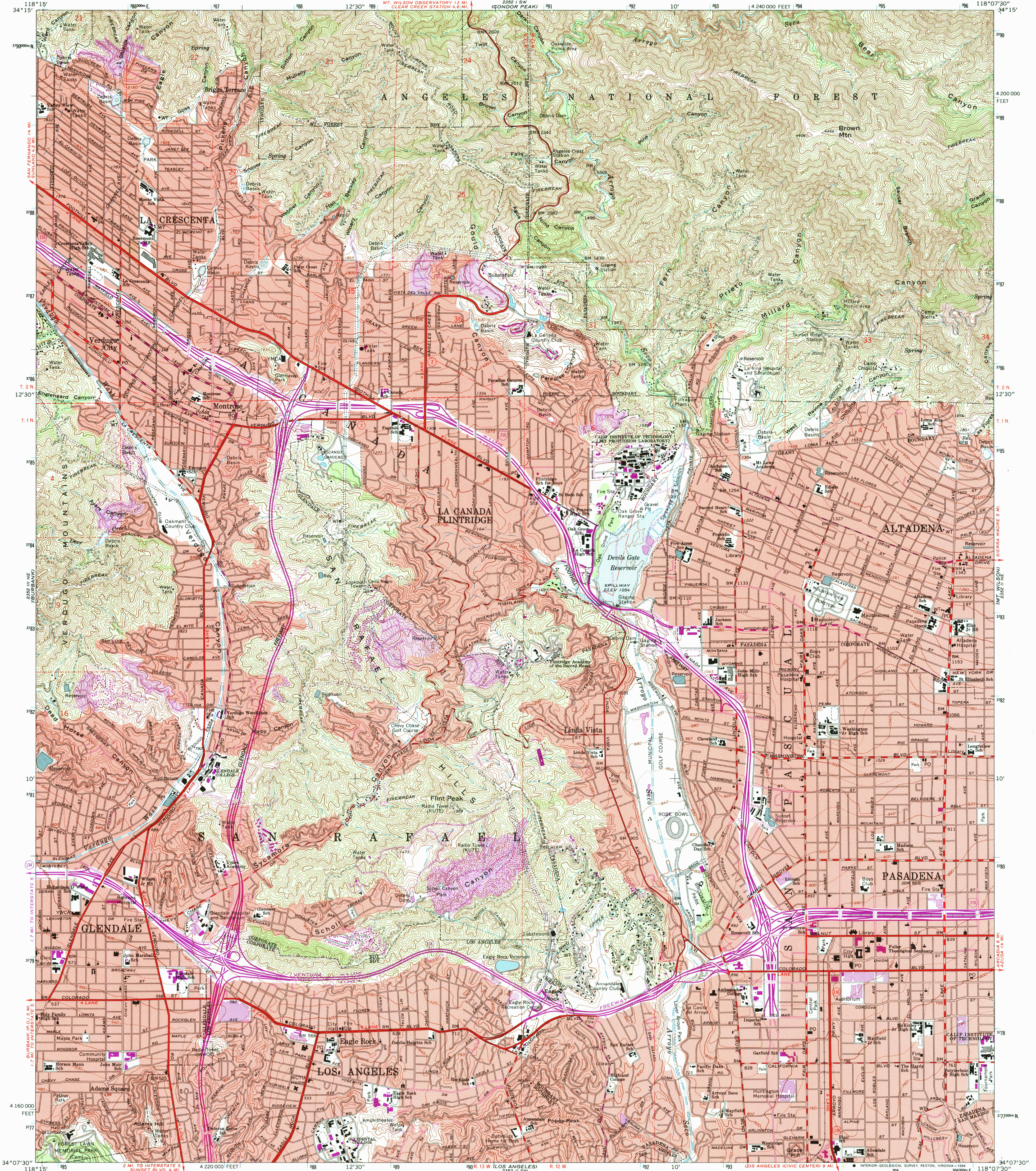


UNITED STATES
DEPARTMENT OF THE INTERIOR
GEOLOGICAL SURVEY

PASADENA QUADRANGLE
CALIFORNIA-LOS ANGELES CO.
7.5 MINUTE SERIES (TOPOGRAPHIC)



Produced by the United States Geological Survey in cooperation with California Department of Water Resources
Control by USGS, NOS/NOAA and Los Angeles Co
Compiled from aerial photographs taken 1964. Field checked 1966
North American Datum of 1927 (NAD 27). Projection and 1000-foot ticks: California Coordinate System, zone 7 (Lambert Conformal Conic)
Blue 1000-meter Universal Transverse Mercator ticks, zone 11
North American Datum of 1983 (NAD 83) is shown by dashed corner ticks. The values of the shift between NAD 27 and NAD 83 for 7.5-minute intersections are obtainable from National Geodetic Survey NADCON software
There may be private inholdings within the boundaries of the National or State reservations shown on this map
Red tint indicates areas in which only landmark buildings are shown
Where omitted, land lines have not been established

UTM GRID AND 1994 MAGNETIC NORTH DECLINATION AT CENTER OF SHEET
Areas covered by dashed light-blue pattern are subject to controlled inundation
Photinspected from 1991 source; no major culture or drainage changes observed. Boundaries and names revised 1994

SCALE 1:24,000
CONTOUR INTERVAL 40 FEET
SUPPLEMENTARY CONTOUR INTERVAL 20 FEET
NATIONAL GEODETIC VERTICAL DATUM OF 1929

THIS MAP COMPLIES WITH NATIONAL MAP ACCURACY STANDARDS
FOR SALE BY U.S. GEOLOGICAL SURVEY
DENVER, COLORADO 80225, OR RESTON, VIRGINIA 22092
A FOLDER DESCRIBING TOPOGRAPHIC MAPS AND SYMBOLS IS AVAILABLE ON REQUEST

ROAD CLASSIFICATION
Primary highway, hard surface
Secondary highway, hard surface
Unimproved road
Light-duty road, hard or improved surface
Unimproved road
Interior-Geological Survey, Reston, Virginia - 1994
Revisions shown in purple and woodland compiled from aerial photographs taken 1986 and other source data
Partial check by U.S. Forest Service. Map edited 1986
Purple tint indicates areas of urban extensions

QUADRANGLE LOCATION
PASADENA, CA
34118-B2-1F-024
1966
PHOTOREVISED 1988
MINOR REVISION 1994
DMA 2352 II NW-SERIES V895

USGS NW HISTORICAL MAP ARCHIVES
JAN 23 1995
REC'D FILE COPY