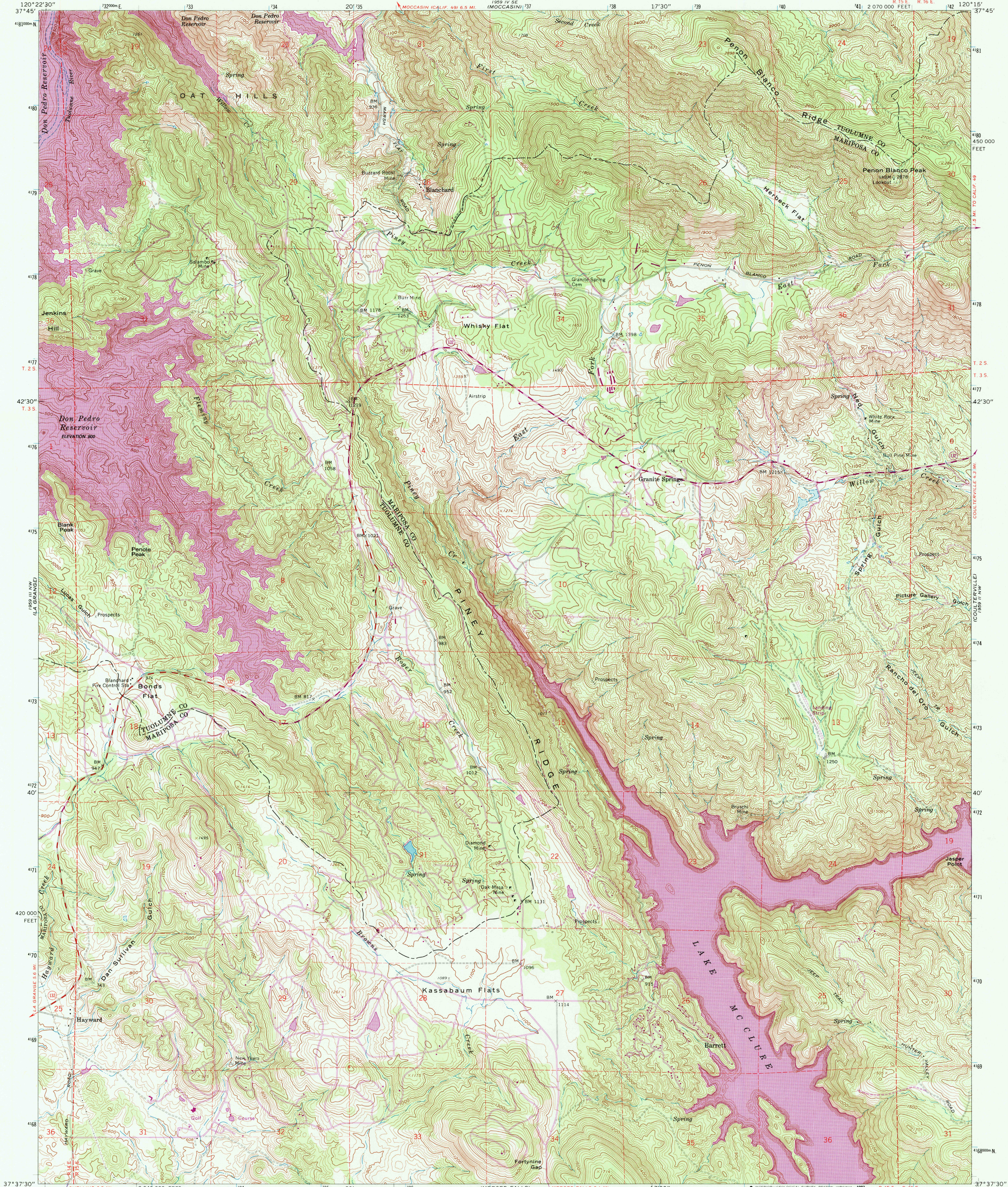


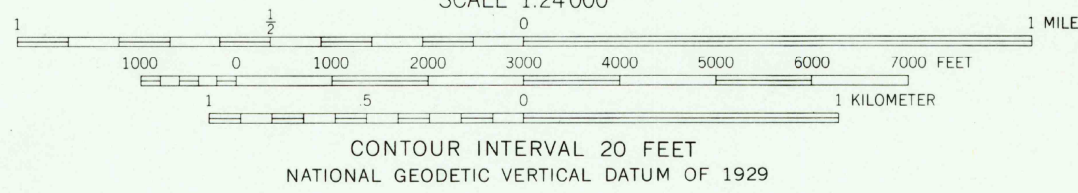
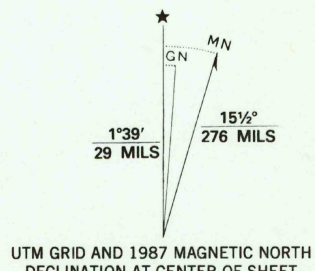
UNITED STATES  
DEPARTMENT OF THE INTERIOR  
GEOLOGICAL SURVEY

PENON BLANCO PEAK QUADRANGLE  
CALIFORNIA  
7.5 MINUTE SERIES (TOPOGRAPHIC)

NE/4 MERCED FALLS 15' QUADRANGLE  
R 15 E. R 16 E.



Mapped, edited, and published by the Geological Survey in cooperation with California Department of Water Resources  
Control by USGS and USC&GS  
Topography by photogrammetric methods from aerial photographs taken 1959. Field checked 1962  
Underwater contours by Turlock Irrigation District  
Polyconic projection. 1927 North American datum  
10,000-foot grid based on California coordinate system, zone 3  
1000-meter Universal Transverse Mercator grid ticks, zone 10, shown in blue  
To place on the predicted North American Datum 1983, move the projection lines 11 meters north and 89 meters east as shown by dashed corner ticks  
Fine red dashed lines indicate selected fence lines



THIS MAP COMPLIES WITH NATIONAL MAP ACCURACY STANDARDS  
FOR SALE BY U. S. GEOLOGICAL SURVEY, DENVER, COLORADO 80225, OR RESTON, VIRGINIA 22092  
A FOLDER DESCRIBING TOPOGRAPHIC MAPS AND SYMBOLS IS AVAILABLE ON REQUEST

Revisions shown in purple compiled from aerial photographs taken 1984 and other sources  
This information not field checked. Map edited 1987



ROAD CLASSIFICATION  
Medium-duty ——— Light-duty ———  
Unimproved dirt ———  
State Route ———

PENON BLANCO PEAK, CALIF.  
NE/4 MERCED FALLS 15' QUADRANGLE  
37120-F3-TF-024

1962  
PHOTOREVISED 1987  
DMA 1959 III NE-SERIES V895