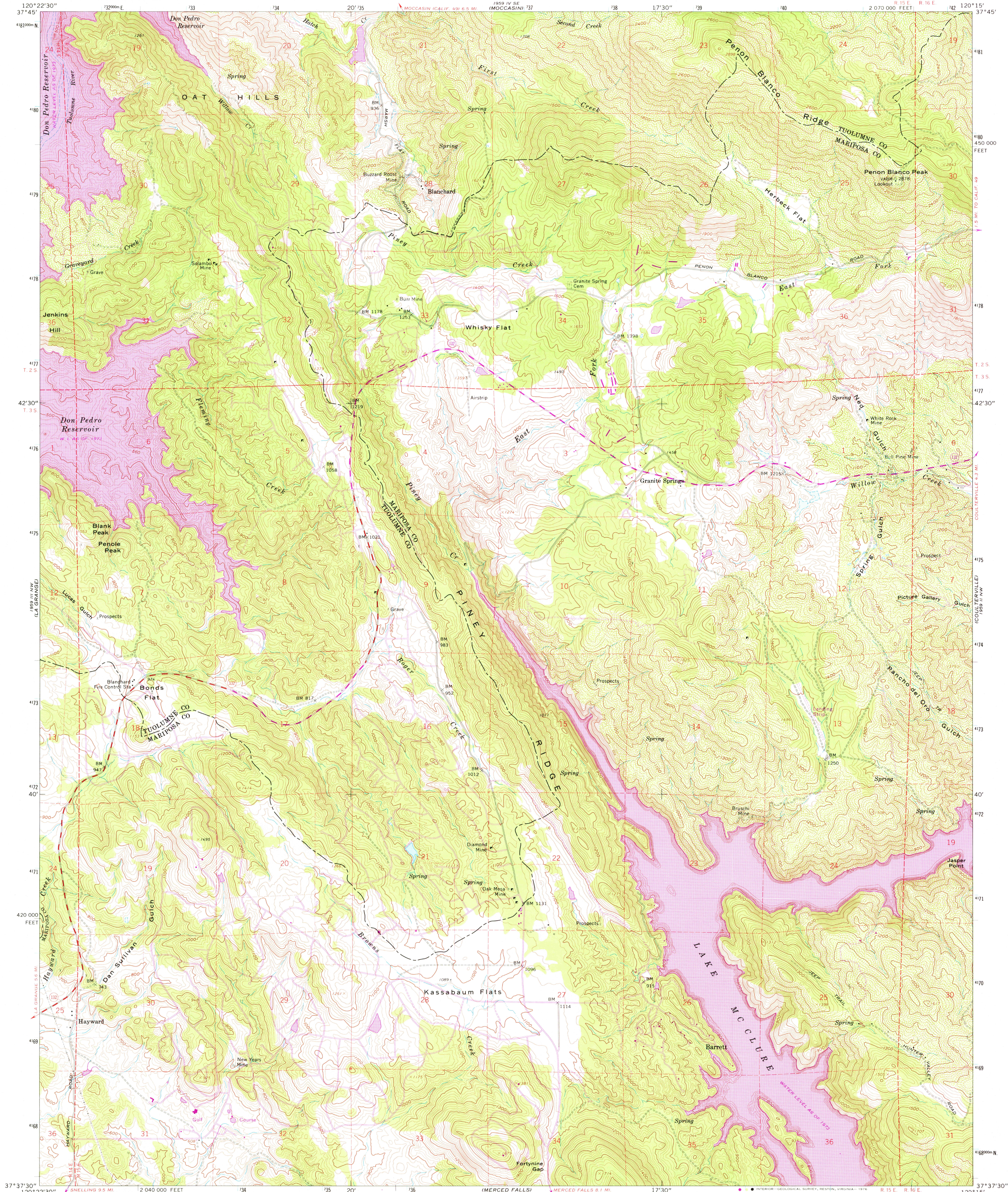


UNITED STATES
DEPARTMENT OF THE INTERIOR
GEOLOGICAL SURVEY

PENON BLANCO PEAK QUADRANGLE
CALIFORNIA
7.5 MINUTE SERIES (TOPOGRAPHIC)

NE/4 MERCER FALLS 15' QUADRANGLE
R 15 E R 16 E
2 070 000 FEET



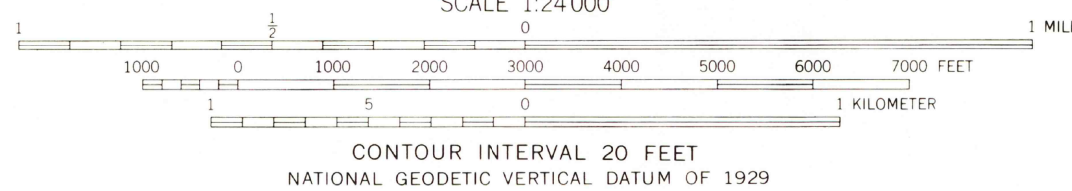
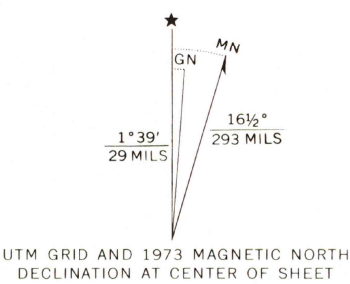
Mapped, edited, and published by the Geological Survey in cooperation with California Department of Water Resources Control by USGS and USC&GS

Topography by photogrammetric methods from aerial photographs taken 1959. Field checked 1962 Underwater contours by Turlock Irrigation District

Polyconic projection. 1927 North American datum 10,000-foot grid based on California coordinate system, zone 3 1000-meter Universal Transverse Mercator grid ticks, zone 10, shown in blue

Fine red dashed lines indicate selected fence lines

Revisions shown in purple compiled from aerial photographs taken 1973. This information not field checked



CONTOUR INTERVAL 20 FEET
NATIONAL GEODETIC VERTICAL DATUM OF 1929



ROAD CLASSIFICATION
Medium-duty ——— Light-duty ———
Unimproved dirt ———
State Route ———

PENON BLANCO PEAK, CALIF.
NE/4 MERCER FALLS 15' QUADRANGLE
N3737.5—W12015.7.5

USGS
Historical File
Topographic Division

1962
PHOTO-REVISED 1973
AMS 1959 III NE—SERIES V895

NOV 23 1976

THIS MAP COMPLIES WITH NATIONAL MAP ACCURACY STANDARDS
FOR SALE BY U. S. GEOLOGICAL SURVEY, DENVER, COLORADO 80225, OR RESTON, VIRGINIA 22092
A FOLDER DESCRIBING TOPOGRAPHIC MAPS AND SYMBOLS IS AVAILABLE ON REQUEST