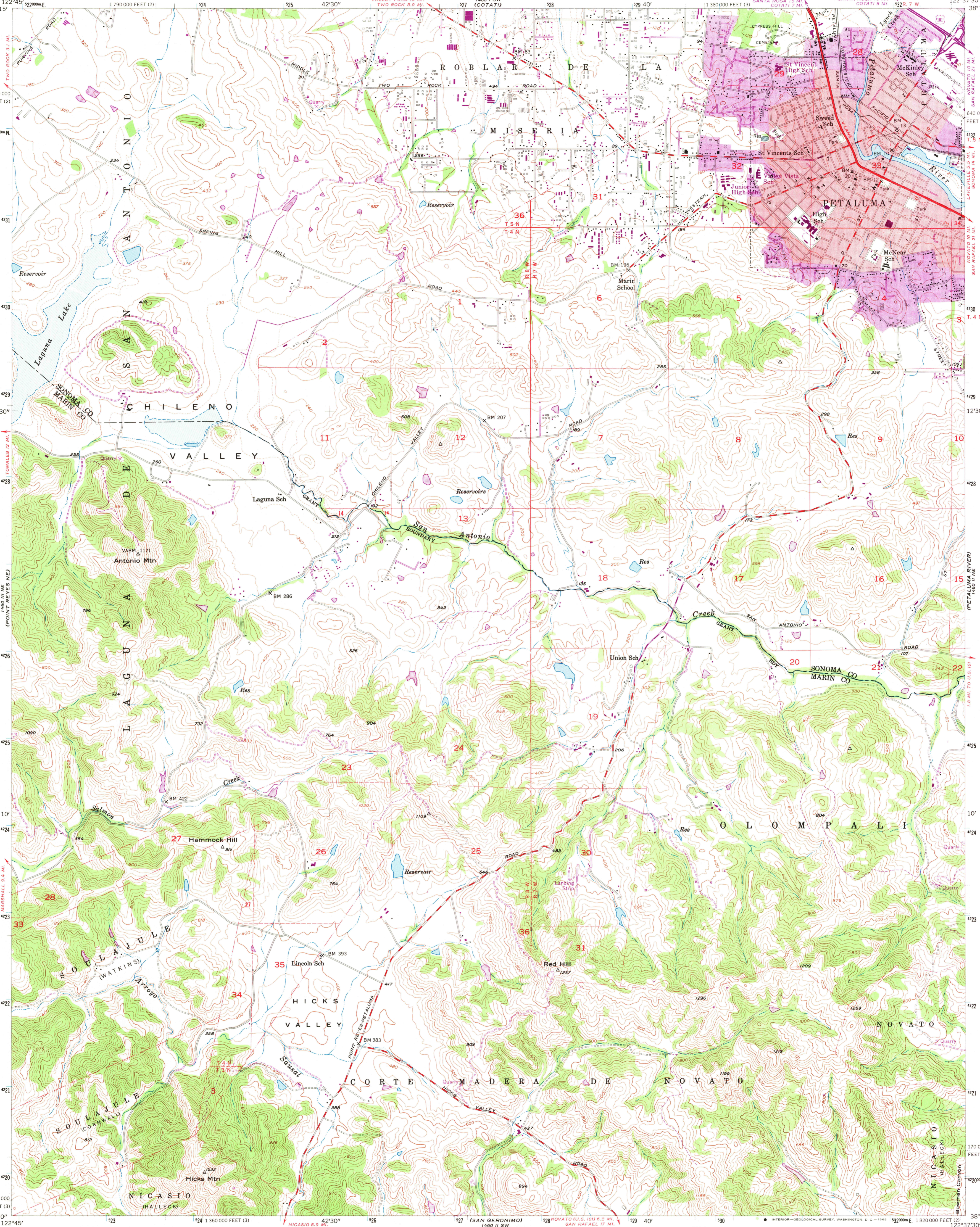
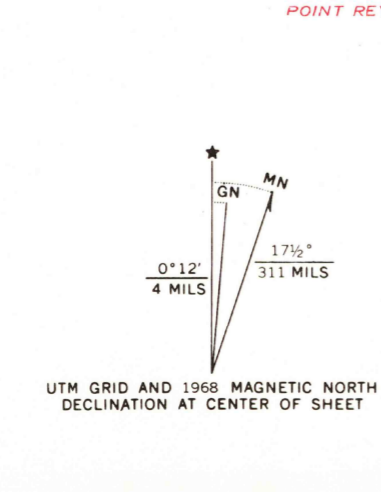


UNITED STATES
DEPARTMENT OF THE INTERIOR
GEOLOGICAL SURVEY

PETALUMA QUADRANGLE
CALIFORNIA
7.5 MINUTE SERIES (TOPOGRAPHIC)
NW 1/4 PETALUMA 15' QUADRANGLE
SANTA ROSA 16 MI.
COTATI 8 MI.
COTATI 7 MI.



Mapped, edited, and published by the Geological Survey
Control by USGS and USC&GS
Topography from aerial photographs by multiplex methods
and by plane-table surveys 1953. Aerial photographs taken 1952
Polyconic projection. 1927 North American datum
10,000-foot grids based on California coordinate system,
zones 2 and 3
Red tint indicates areas in which only landmark buildings are shown
Dashed land lines indicate approximate locations
Unchecked elevations are shown in brown
1000-meter Universal Transverse Mercator grid ticks,
zone 10, shown in blue
Revised in cooperation with California
Department of Water Resources



THIS MAP COMPLIES WITH NATIONAL MAP ACCURACY STANDARDS
FOR SALE BY U.S. GEOLOGICAL SURVEY, DENVER, COLORADO 80225, OR WASHINGTON, D.C. 20242
A FOLDER DESCRIBING TOPOGRAPHIC MAPS AND SYMBOLS IS AVAILABLE ON REQUEST

USGS
Historical File
Topographic Division
QUADRANGLE LOCATION

FILE COPY
TOPOGRAPHIC DIVISION

ROAD CLASSIFICATION
Heavy duty
Medium duty
Unimproved dirt
U.S. Route
Petaluma, Calif.
NW 1/4 PETALUMA 15' QUADRANGLE
N 3807.5—W 12237.5/7.5
1953
PHOTO REVISITED 1968
AMS 1460 II NW—SERIES V895

6645
SEP 24 1969