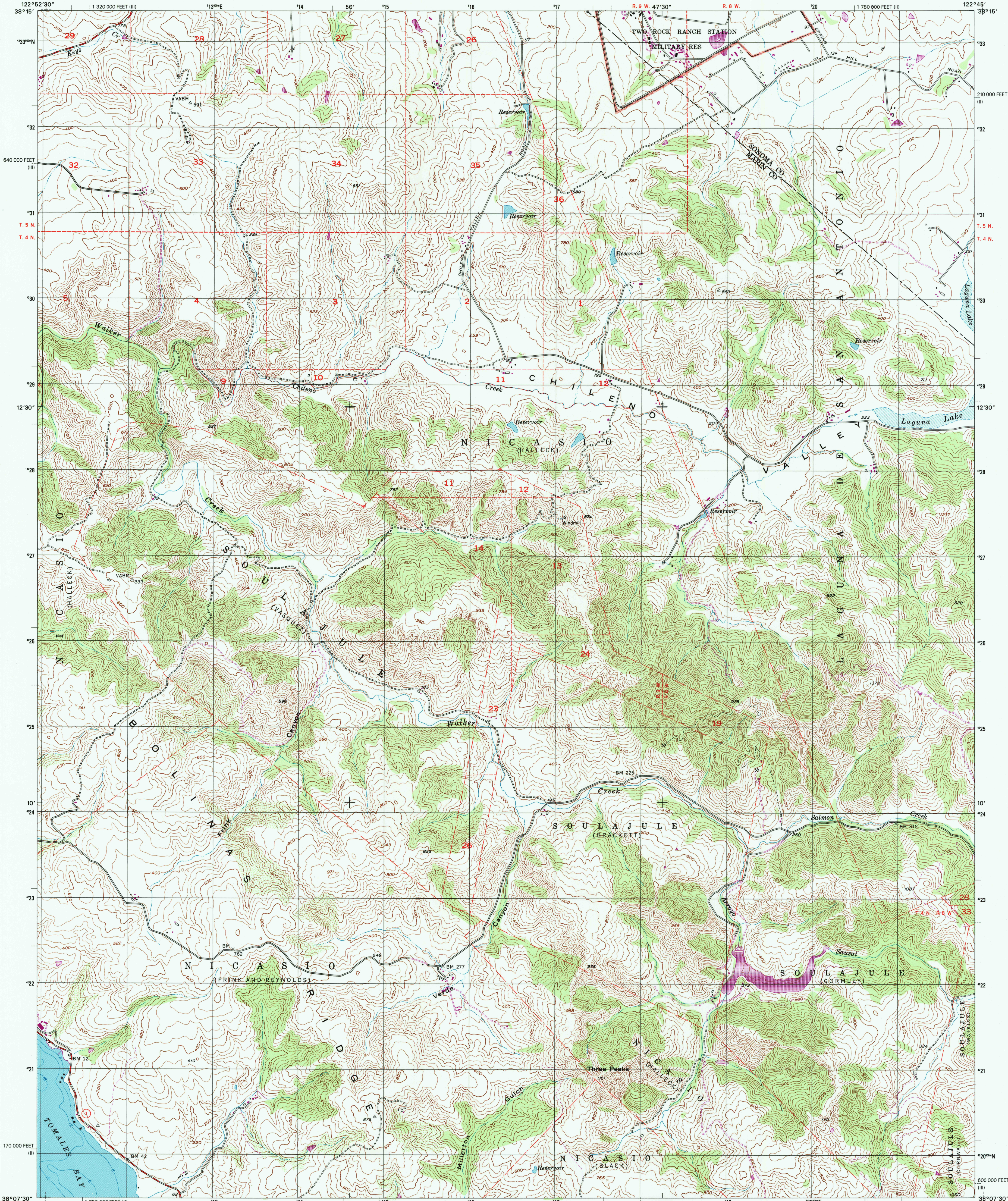




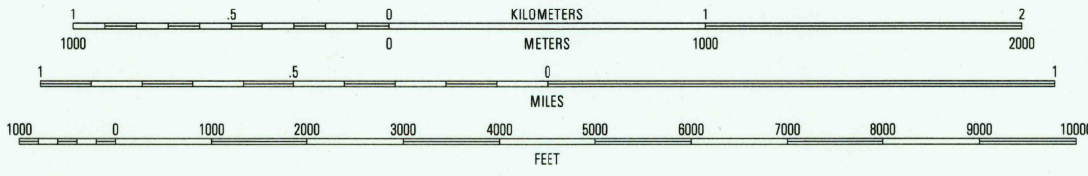
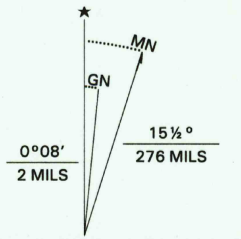
U.S. DEPARTMENT OF THE INTERIOR  
U.S. GEOLOGICAL SURVEY

POINT REYES NE QUADRANGLE  
CALIFORNIA  
7.5-MINUTE SERIES (TOPOGRAPHIC)



Produced by the United States Geological Survey  
Topography compiled 1952. Planimetry derived from imagery dated 1971 and other sources. Photoinspected using imagery dated 1995; no major culture or drainage changes observed. PLSS and survey control current as of 1954. Boundaries, other than corporate, verified 1998.  
North American Datum of 1927 (NAD 27). Projection and 1000-meter grid: Universal Transverse Mercator, zone 10 10 000-foot ticks: California Coordinate System of 1927 (zones 2 and 3).  
North American Datum of 1983 (NAD 83) is shown by dashed corner ticks. The values of the shift between NAD 27 and NAD 83 for 7.5-minute intersections are obtainable from National Geodetic Survey NADCON software.  
There may be private inholdings within the boundaries of the National or State reservations shown on this map.

Revisions shown in purple compiled from aerial photographs taken 1971 and other source data. This information not field checked.



CONTOUR INTERVAL 40 FEET  
NATIONAL GEODETIC VERTICAL DATUM OF 1929  
TO CONVERT FROM FEET TO METERS, MULTIPLY BY 0.3048  
DEPTH CURVES IN FEET-DATUM IS MEAN LOWER LOW WATER  
THE RELATIONSHIP BETWEEN THE TWO DATUMS IS VARIABLE  
THE AVERAGE RANGE OF TIDE IS APPROXIMATELY 4 FEET

THIS MAP COMPLIES WITH NATIONAL MAP ACCURACY STANDARDS  
FOR SALE BY U.S. GEOLOGICAL SURVEY, P.O. BOX 25286, DENVER, COLORADO 80225  
A FOLDER DESCRIBING TOPOGRAPHIC MAPS AND SYMBOLS IS AVAILABLE ON REQUEST



QUADRANGLE LOCATION

1	2	3
4	5	6
7	8	9

ADJOINING 7.5' QUADRANGLE NAMES

ROAD CLASSIFICATION  
Primary highway  
Secondary highway  
Light-duty road, hard or  
Improved surface  
Unimproved road  
Interstate Route  
U.S. Route  
State Route

POINT REYES NE, CA  
1995  
PHOTOREVISED 1971  
NIMA 1460 III NE-SERIES V895

