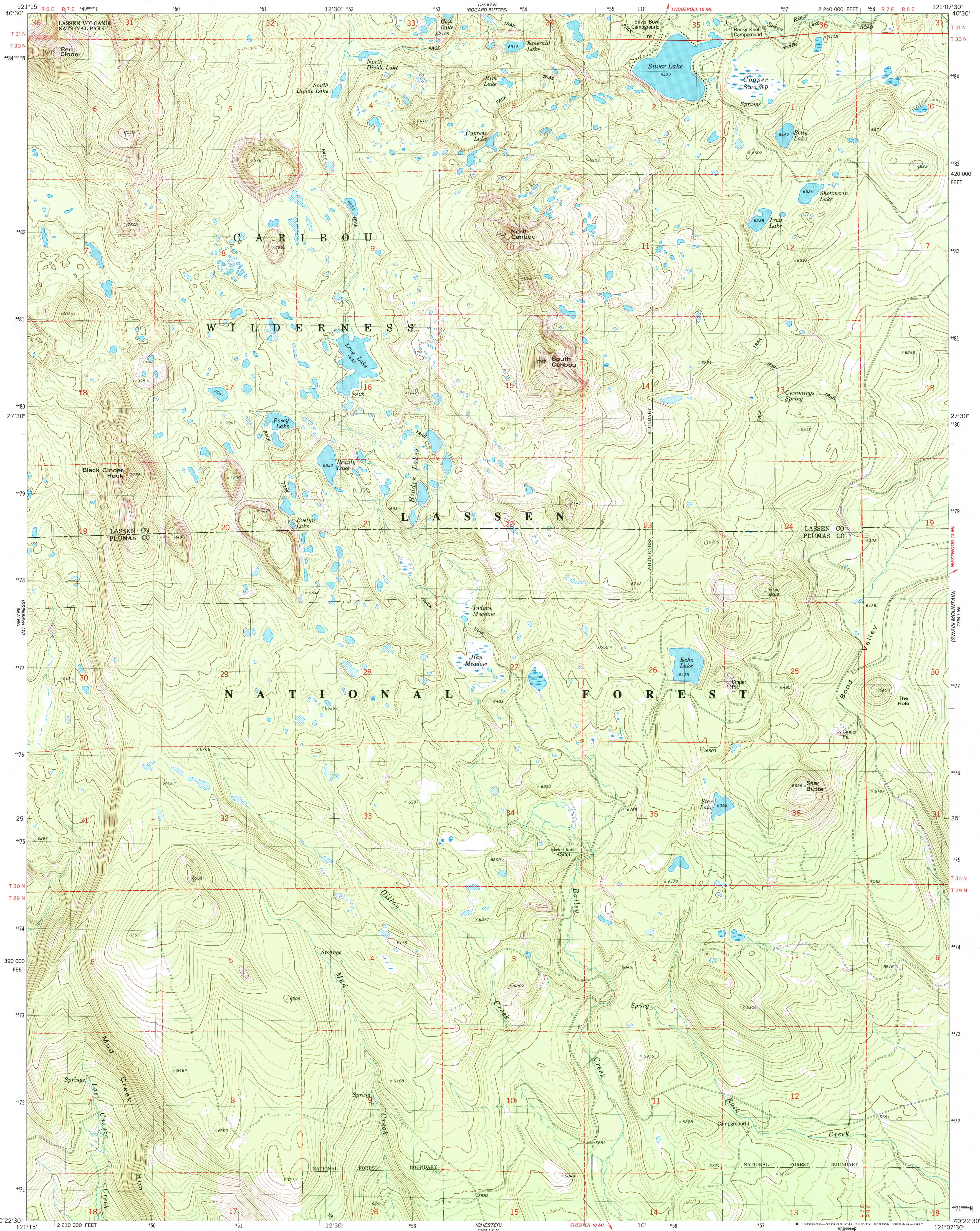


UNITED STATES
DEPARTMENT OF THE INTERIOR
GEOLOGICAL SURVEY

RED CINDER QUADRANGLE
CALIFORNIA
7.5 MINUTE SERIES (TOPOGRAPHIC)
NW¼ CHESTER 15' QUADRANGLE



Mapped, edited, and published by the Geological Survey

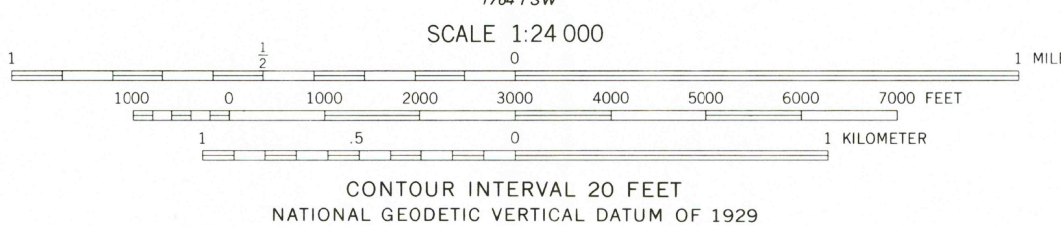
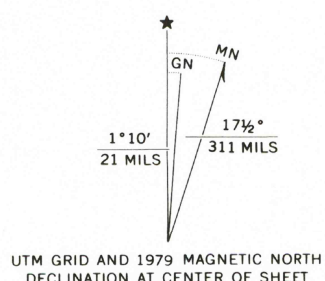
Control by USGS and NOS/NOAA

Topography by photogrammetric methods from aerial photographs taken 1973. Field checked 1974. Map edited 1979

Projection and 10,000-foot grid ticks: California coordinate system, zone 1 (Lambert conformal conic)
1000-meter Universal Transverse Mercator grid, zone 10
1927 North American datum

To place on the predicted North American Datum 1983 move the projection lines 17 meters north and 90 meters east as shown by dashed corner ticks

There may be private inholdings within the boundaries of the National or State reservations shown on this map



| ROAD CLASSIFICATION | |
|---------------------------------|---|
| Primary highway, hard surface | Light-duty road, hard or improved surface |
| Secondary highway, hard surface | Unimproved road |
| Interstate Route | U. S. Route |
| | State Route |

RED CINDER, CALIF.
NW¼ CHESTER 15' QUADRANGLE
40121-D5-TF-024

1979

DMA 1764 1 NW—SERIES V895

