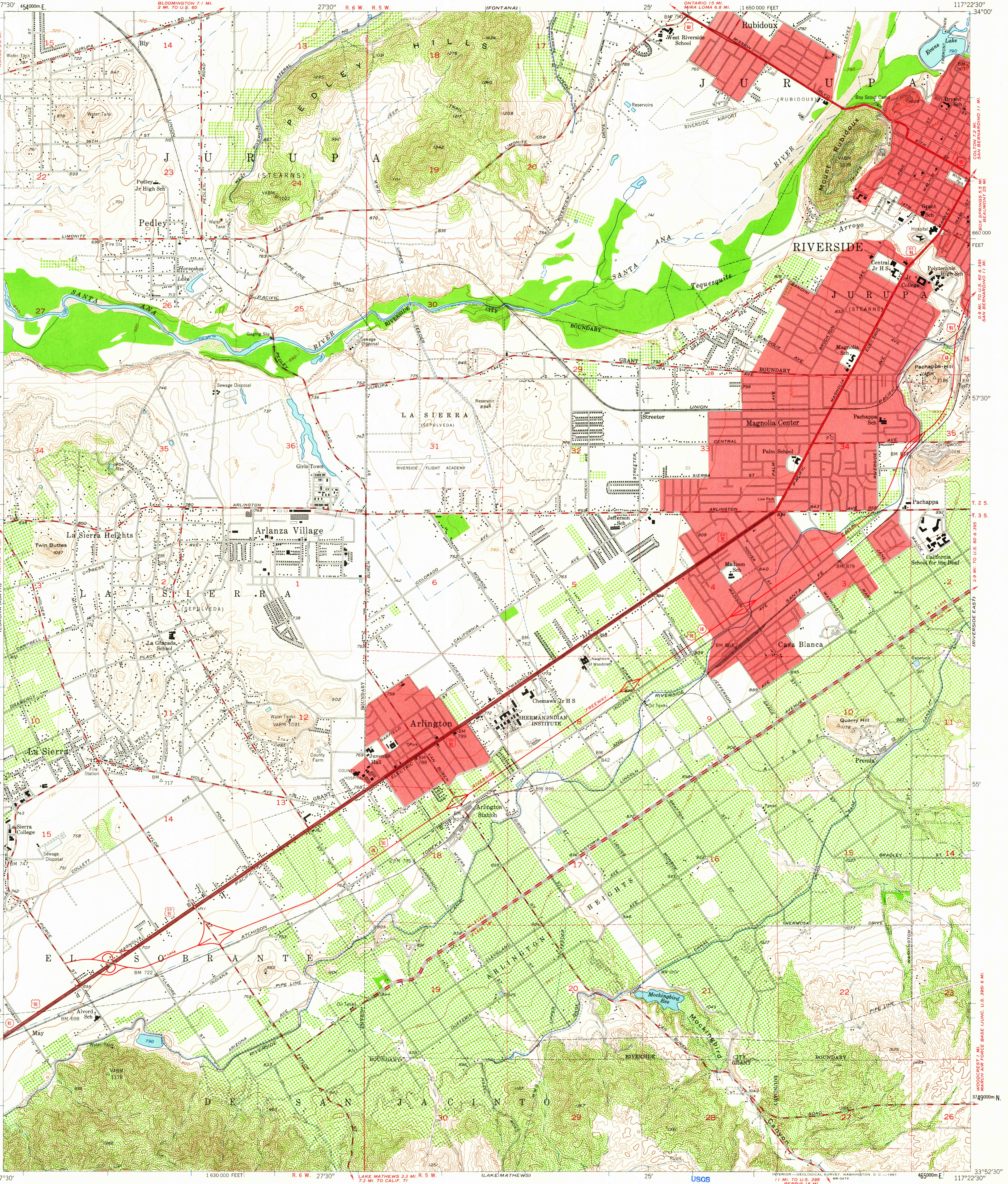


UNITED STATES  
DEPARTMENT OF THE INTERIOR  
GEOLOGICAL SURVEY

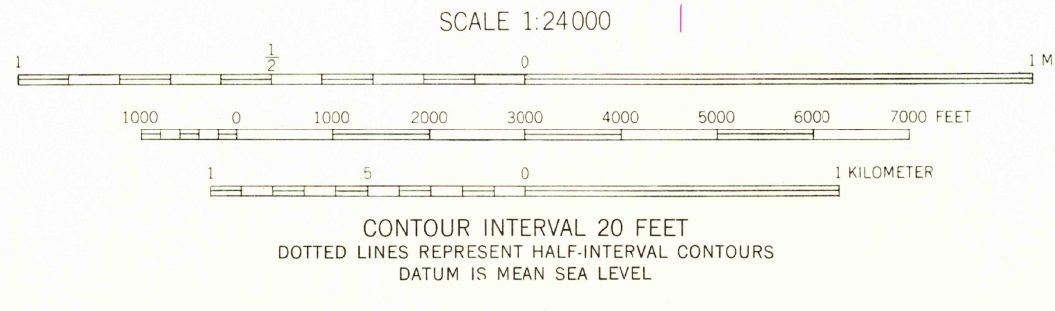
STATE OF CALIFORNIA  
DIRECTOR OF PUBLIC WORKS

RIVERSIDE WEST QUADRANGLE  
CALIFORNIA—RIVERSIDE CO.  
7.5 MINUTE SERIES (TOPOGRAPHIC)  
NW/4 RIVERSIDE 15' QUADRANGLE



Mapped, edited, and published by the Geological Survey  
Control by USGS, USC&GS, and  
Metropolitan Water District of Southern California  
Topography from aerial photographs by multiplex methods  
and by plane-table surveys 1939.  
Aerial photographs taken 1948 and 1951. Field check 1953  
Polyconic projection. 1927 North American datum  
10,000-foot grid based on California coordinate system, zone 6  
Dashed land lines indicate approximate locations  
Dotted land lines were established by private survey  
Red tint indicates areas in which only landmark buildings are shown  
1000-meter Universal Transverse Mercator grid ticks,  
zone 11, shown in blue

TRUE NORTH  
MAGNETIC NORTH  
APPROXIMATE MEAN  
DECLINATION, 1953



USGS  
Historical File  
Topographic Division

ROAD CLASSIFICATION

Heavy-duty	Light-duty
Medium-duty	Unimproved dirt
U. S. Route	State Route



USGS.  
FILE COPY  
TOPOGRAPHIC DIVISION

RIVERSIDE WEST, CALIF.  
NW/4 RIVERSIDE 15' QUADRANGLE  
N3352.5—W11722.5/7.5  
1953

THIS MAP COMPLIES WITH NATIONAL MAP ACCURACY STANDARDS  
FOR SALE BY U. S. GEOLOGICAL SURVEY, DENVER 25, COLORADO OR WASHINGTON 25, D. C.  
A FOLDER DESCRIBING TOPOGRAPHIC MAPS AND SYMBOLS IS AVAILABLE ON REQUEST

JAN 24 1962  
5990