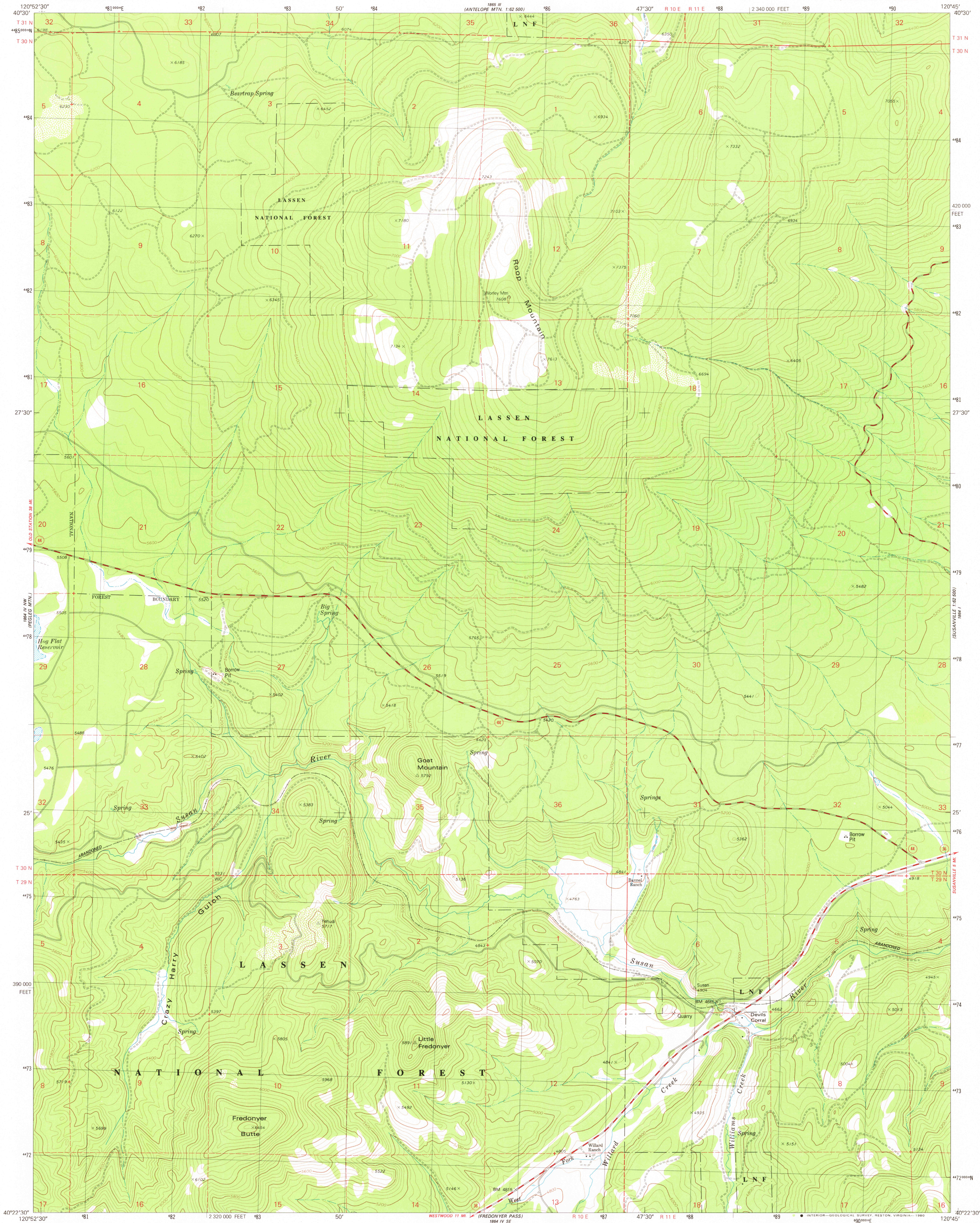


UNITED STATES
DEPARTMENT OF THE INTERIOR
GEOLOGICAL SURVEY

ROOP MOUNTAIN QUADRANGLE
CALIFORNIA-LASSEN CO.
7.5 MINUTE SERIES (TOPOGRAPHIC)
NE/4 WESTWOOD 15' QUADRANGLE

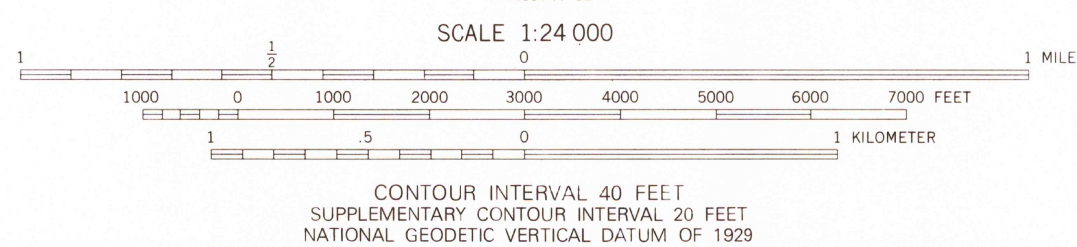
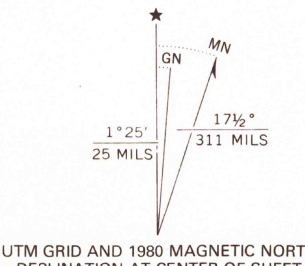


Mapped, edited, and published by the Geological Survey

Control by USGS and NOS/NOAA
Topography by photogrammetric methods from aerial
photographs taken 1973. Field checked 1974
Map edited 1980

Projection and 10,000-foot grid ticks: California coordinate
system, zone 1 (Lambert conformal conic)
1000-meter Universal Transverse Mercator grid, zone 10
1927 North American Datum
To place on the predicted North American Datum 1983
move the projection lines 16 meters north and
89 meters east as shown by dashed corner ticks

There may be private inholdings within the boundaries of
the National or State reservations shown on this map



THIS MAP COMPLIES WITH NATIONAL MAP ACCURACY STANDARDS
FOR SALE BY U.S. GEOLOGICAL SURVEY, DENVER, COLORADO 80225, OR RESTON, VIRGINIA 22092
A FOLDER DESCRIBING TOPOGRAPHIC MAPS AND SYMBOLS IS AVAILABLE ON REQUEST

ROAD CLASSIFICATION
Primary highway,
hard surface
Secondary highway,
hard surface
Unimproved road
Interstate Route
U.S. Route
State Route



USGS
Historical File
Topographic Division

ROOP MOUNTAIN, CALIF.
NE/4 WESTWOOD 15' QUADRANGLE
N4022.5-W12045.7.5

1980

DMA 1984 IV NE-SERIES V895

OCT 22 1980