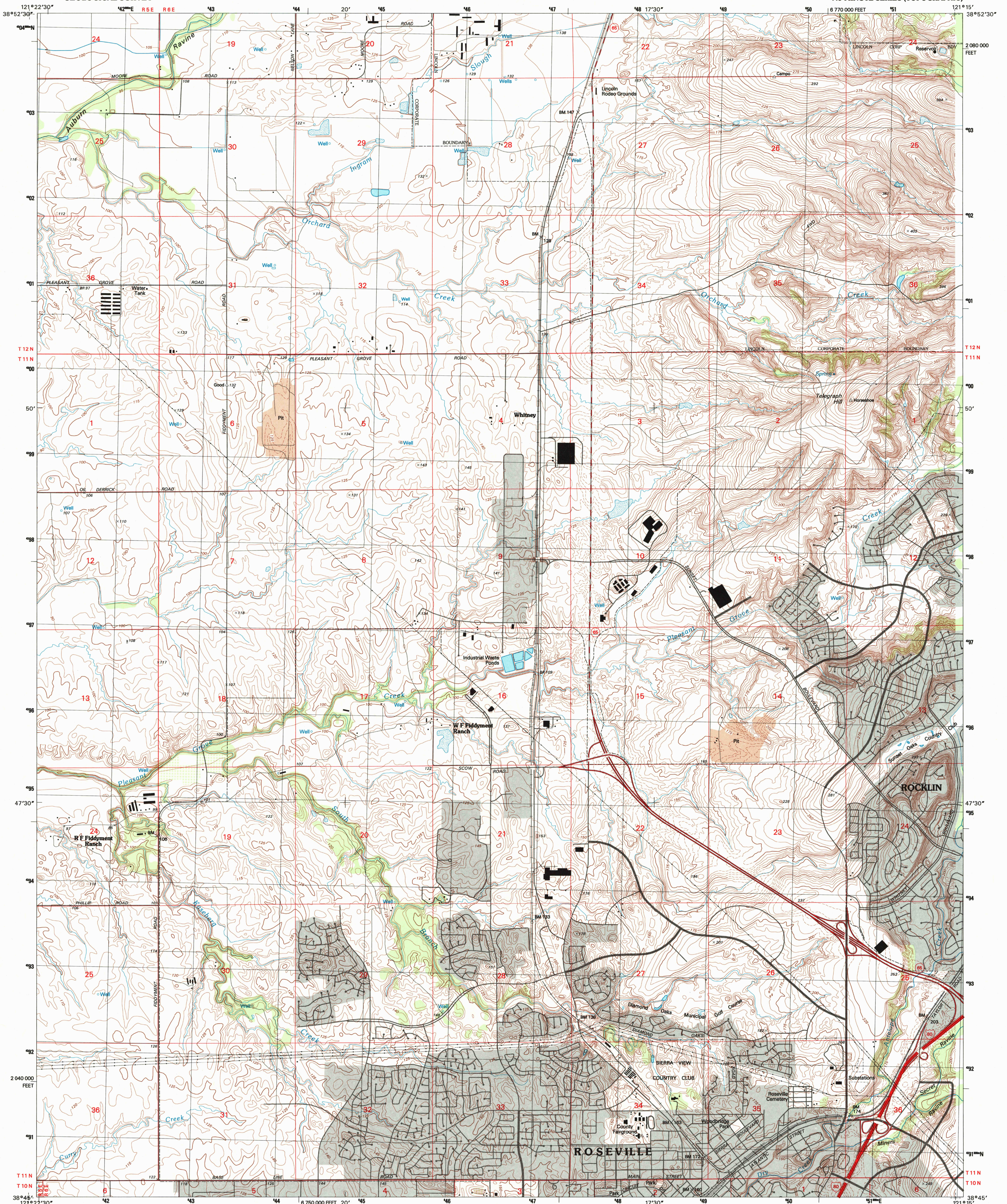
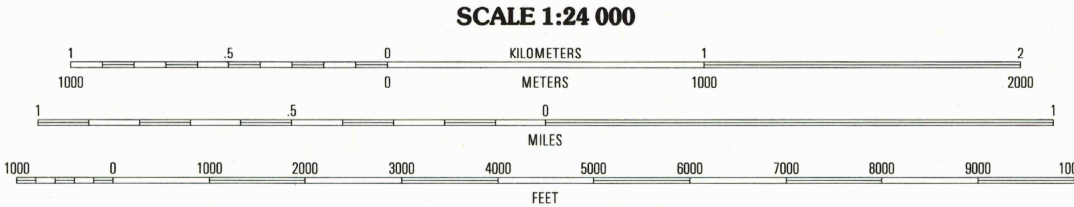
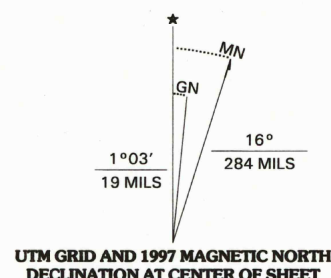


UNITED STATES
DEPARTMENT OF THE INTERIOR
GEOLOGICAL SURVEY

ROSEVILLE QUADRANGLE
CALIFORNIA-PLACER CO.
7.5-MINUTE SERIES (TOPOGRAPHIC)



Produced by the United States Geological Survey
Topography compiled 1949. Planimetry derived from imagery taken 1992. Public Land Survey System and Survey Control current as of 1997. Contours that conflict with updated major features are dashed. Contour gaps on the east edge are due to NAD 83 shift.
North American Datum of 1983 (NAD 83). Projection and 1000-meter grid: Universal Transverse Mercator, zone 10 10 000-foot ticks: California Coordinate System of 1983 (zone 2)
North American Datum of 1927 (NAD 27) is shown by dashed corner ticks. The values of the shift between NAD 83 and NAD 27 for 7.5-minute intersections are obtainable from National Geodetic Survey NADCON software



CONTOUR INTERVAL 5 FEET
NATIONAL GEODETIC VERTICAL DATUM OF 1929
TO CONVERT FROM FEET TO METERS, MULTIPLY BY 0.3048



QUADRANGLE LOCATION

1	2	3
4	5	6
7	8	9

1 Sheridan
2 Lincoln
3 Gold Hill
4 Pleasant Grove
5 Rocklin
6 Rio Linda
7 Citrus Heights
8 Folsom

ROAD CLASSIFICATION
Primary highway
hard surface
Secondary highway
hard surface
Unimproved road
Light-duty road, hard or
improved surface
Interstate Route
U.S. Route
State Route

ROSEVILLE, CA
1992

THIS MAP COMPLIES WITH NATIONAL MAP ACCURACY STANDARDS
FOR SALE BY U.S. GEOLOGICAL SURVEY, P.O. BOX 25286, DENVER, COLORADO 80225
A FOLDER DESCRIBING TOPOGRAPHIC MAPS AND SYMBOLS IS AVAILABLE ON REQUEST

ADJOINING 7.5' QUADRANGLE NAMES

DMA 1761 IV SE-SERIES V895

