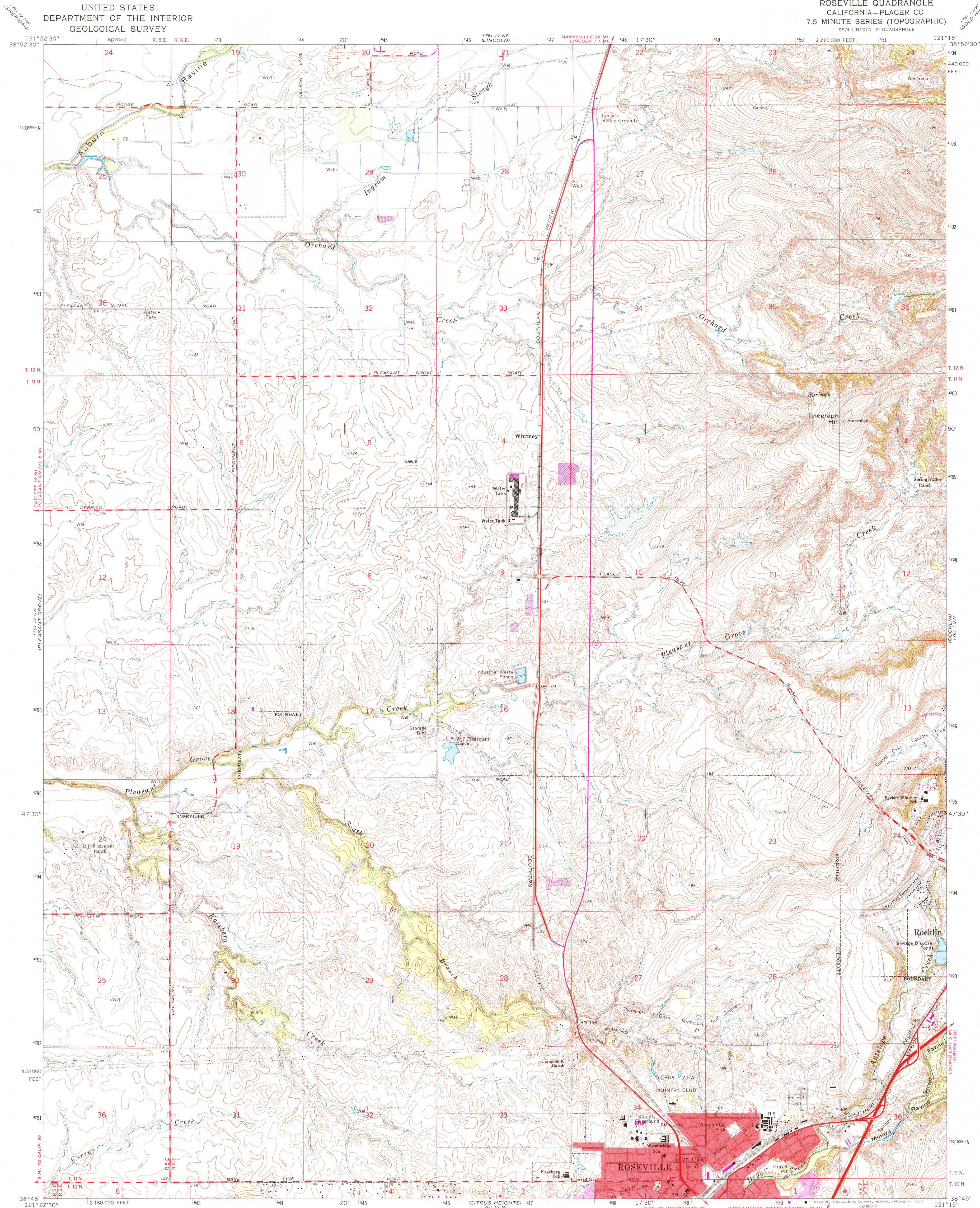


UNITED STATES
DEPARTMENT OF THE INTERIOR
GEOLOGICAL SURVEY

ROSEVILLE QUADRANGLE
CALIFORNIA—PLACER CO
7.5 MINUTE SERIES (TOPOGRAPHIC)
SE/4 LINCOLN 15 QUADRANGLE



Mapped, edited, and published by the Geological Survey
in cooperation with California Department of Water Resources

Control by USGS and USC&GS

Planimetry by photogrammetric methods from aerial photographs
taken 1949. Topography by planetable surveys 1908

Revised from aerial photographs taken 1966. Field checked 1967

Polyconic projection. 1927 North American datum

10,000-foot grid based on California coordinate system, zone 2

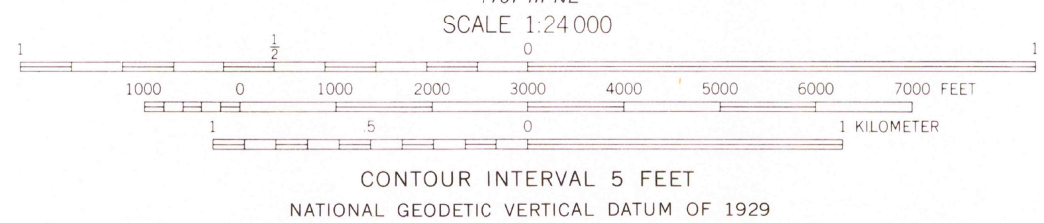
1000-meter Universal Transverse Mercator grid ticks,
zone 10, shown in blue

Red tint indicates areas in which only landmark buildings are shown

Fine red dashed lines indicate selected fence lines

Revisions shown in purple compiled from aerial photographs
taken 1975. This information not field checked

Purple tint indicates extension of urban areas



ROAD CLASSIFICATION
Heavy-duty ——— Light-duty ———
Medium-duty ——— Unimproved dirt ———
○ Interstate Route ○ State Route



ROSEVILLE, CALIF.
SE/4 LINCOLN 15 QUADRANGLE
N 3845—W12115/7.5

USGS
Historical File
Topographic Division

1967
PHOTOREVISED 1975
AMS 1761 IV SE—SERIES V895

SEP 26 1977