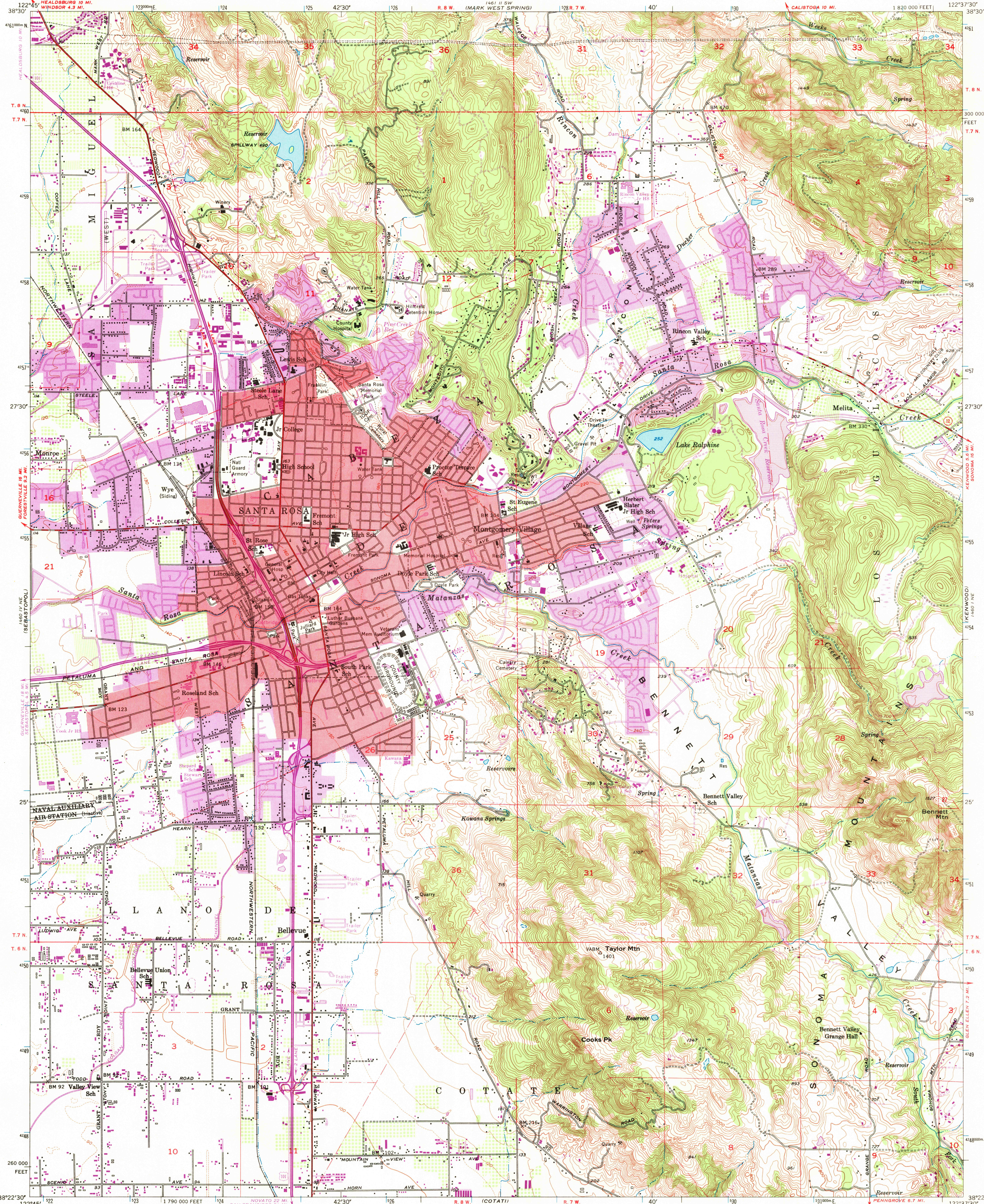


UNITED STATES
DEPARTMENT OF THE INTERIOR
GEOLOGICAL SURVEY

SANTA ROSA QUADRANGLE
CALIFORNIA-SONOMA CO.
7.5 MINUTE SERIES (TOPOGRAPHIC)
NW/4 SANTA ROSA 15' QUADRANGLE



Maped, edited, and published by the Geological Survey

Control by USGS and USC&GS

Topography from aerial photographs by Kelsh plotter methods
and by plane-table surveys 1954. Aerial photographs taken 1952

Polyconic projection. 1927 North American datum
10,000-foot grid based on California coordinate system, zone 2

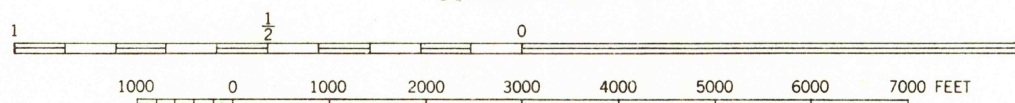
Red tint indicates areas in which only landmark buildings are shown
Dashed land lines indicate approximate locations

1000-meter Universal Transverse Mercator grid ticks,
zone 10, shown in blue

Revisions shown in purple compiled from aerial photographs
taken 1968. This information not field checked

Purple tint indicates extension of urban areas

SCALE 1:24,000



CONTOUR INTERVAL 20 FEET
DASHED LINES REPRESENT HALF INTERVAL CONTOURS
DATUM IS MEAN SEA LEVEL

THIS MAP COMPLIES WITH NATIONAL MAP ACCURACY STANDARDS
FOR SALE BY U.S. GEOLOGICAL SURVEY, DENVER, COLORADO 80225 OR WASHINGTON, D. C. 20242
A FOLDER DESCRIBING TOPOGRAPHIC MAPS AND SYMBOLS IS AVAILABLE ON REQUEST

USGS
Historical File
Topographic Division

ROAD CLASSIFICATION
Heavy-duty ——— Light-duty ———
Medium-duty ——— Unimproved dirt ———
U.S. Route ——— State Route ———



U.S.G.S.
FILE COPY
TOPOGRAPHIC DIVISION

SANTA ROSA, CALIF.
NW/4 SANTA ROSA 15' QUADRANGLE
N3822.5-W12237.5/7.5

1954
PHOTOGRAPHED 1968
AMS 1460 I NW-SERIES V895

4775
101-1-10 1969