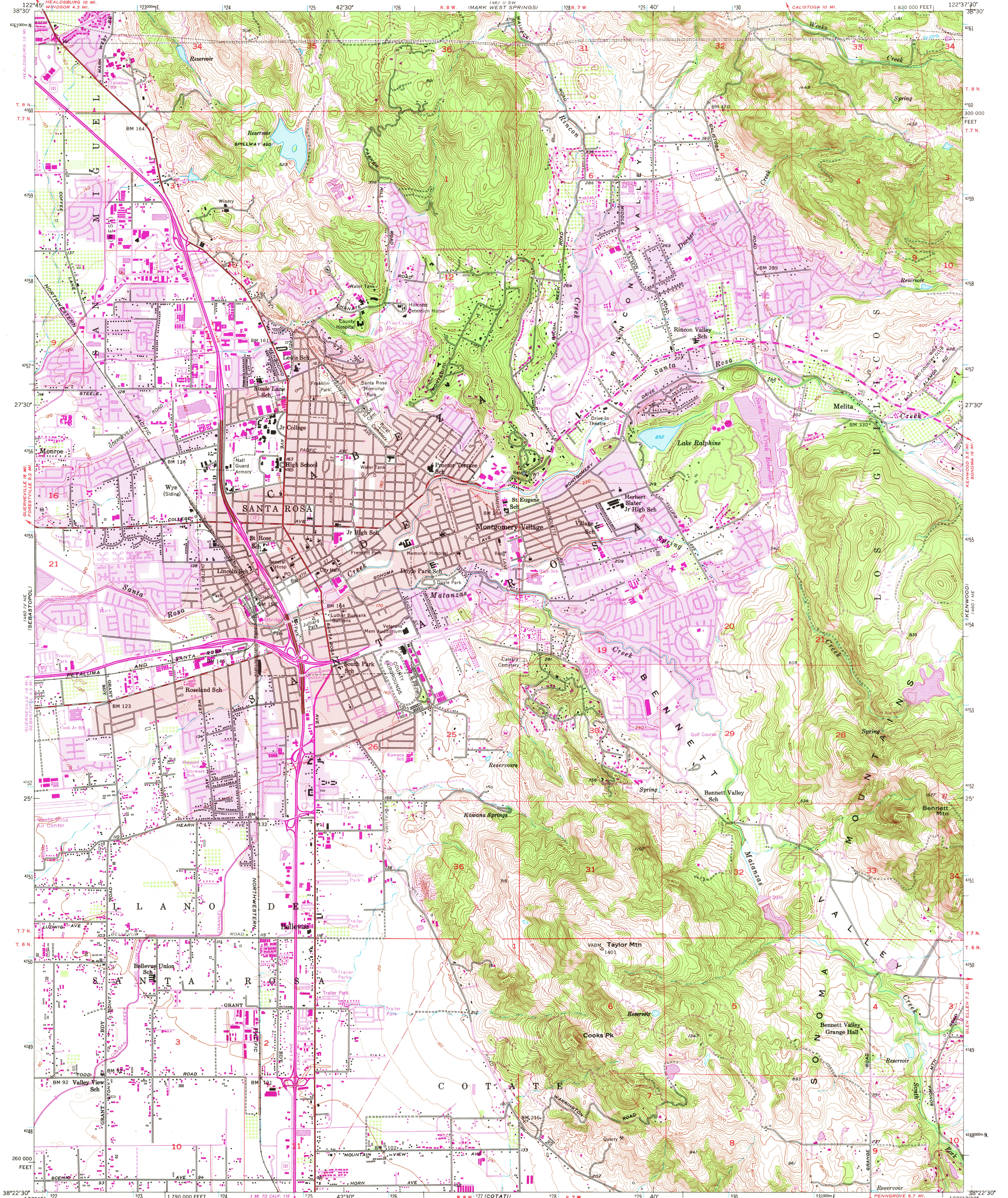


UNITED STATES
DEPARTMENT OF THE INTERIOR
GEOLOGICAL SURVEY

SANTA ROSA QUADRANGLE
CALIFORNIA—SONOMA CO.
7.5 MINUTE SERIES (TOPOGRAPHIC)
NW/4 SANTA ROSA 15' QUADRANGLE



Mapped, edited, and published by the Geological Survey
Control by USGS and USC&GS

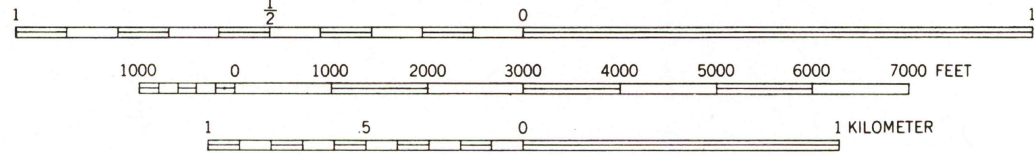
Topography from aerial photographs by Kelsh plotter methods
and by plane-table surveys 1954. Aerial photographs taken 1952

Polyconic projection
10,000-foot grid based on California coordinate system, zone 2
1000-meter Universal Transverse Mercator grid ticks
zone 10, shown in blue. 1927 North American Datum
To place on the predicted North American Datum 1983
move the projection lines 16 meters north and
95 meters east as shown by dashed corner ticks

Red tint indicates areas in which only landmark buildings are shown
Dashed land lines indicate approximate locations

Revisions shown in purple and woodland compiled from
aerial photographs taken 1978 and other source data
This information not field checked. Map edited 1980

SCALE 1:24,000



CONTOUR INTERVAL 20 FEET
DASHED LINES REPRESENT HALF INTERVAL CONTOURS
NATIONAL GEODETIC VERTICAL DATUM OF 1929

ROAD CLASSIFICATION

- Heavy-duty ——— Light-duty ———
- Medium-duty ——— Unimproved dirt ———
- U.S. Route ——— State Route ———



QUADRANGLE LOCATION

USGS
Historical File
Topographic Division

SANTA ROSA, CALIF.
NW/4 SANTA ROSA 15' QUADRANGLE
N3822.5-W12237.5/7.5

1954
PHOTOREVISED 1983
DMA 1460 1 NW—SERIES V895

THIS MAP COMPLIES WITH NATIONAL MAP ACCURACY STANDARDS
FOR SALE BY U.S. GEOLOGICAL SURVEY, DENVER, COLORADO 80225, OR RESTON, VIRGINIA 22092
A FOLDER DESCRIBING TOPOGRAPHIC MAPS AND SYMBOLS IS AVAILABLE ON REQUEST