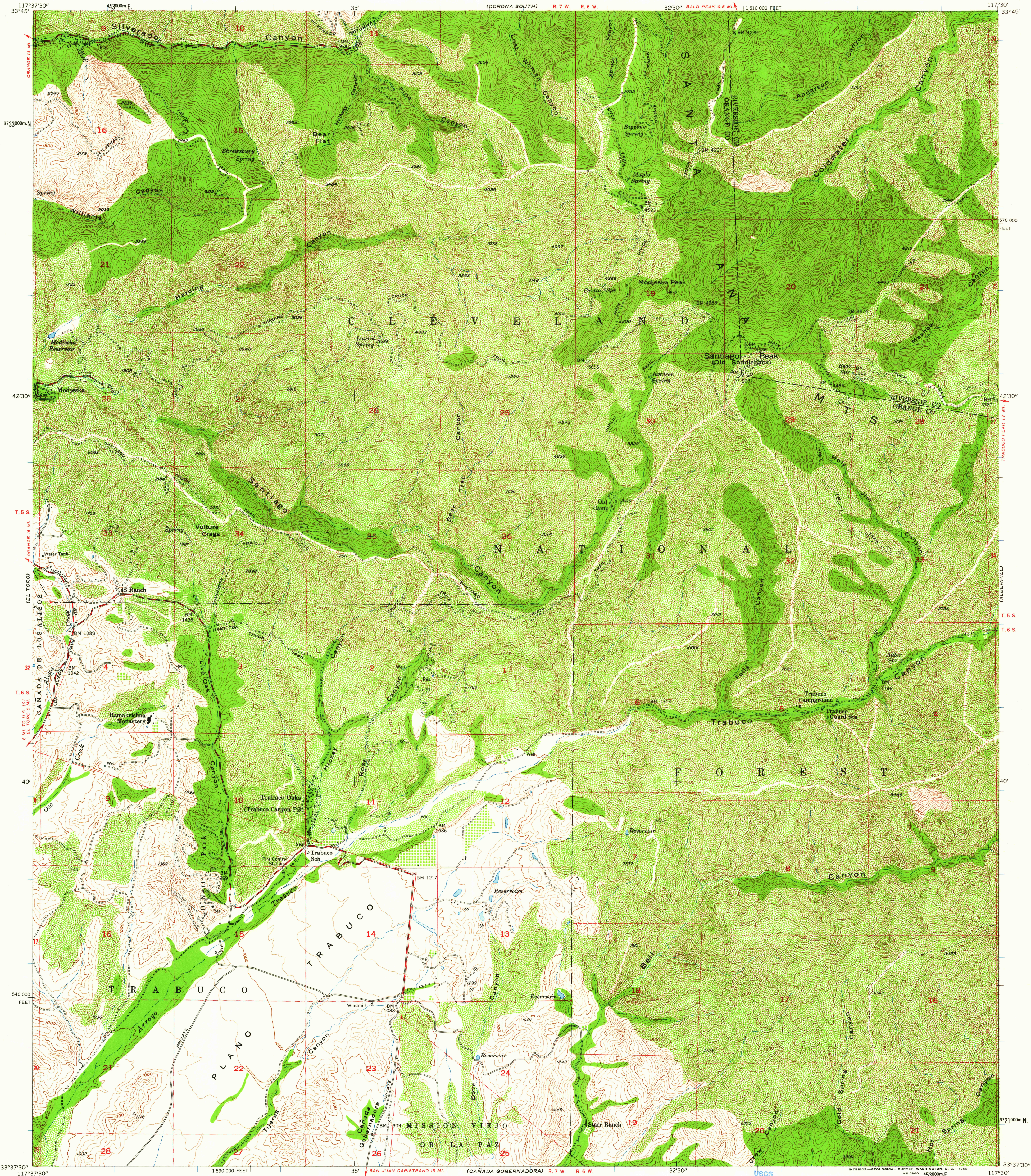


UNITED STATES
DEPARTMENT OF THE INTERIOR
GEOLOGICAL SURVEY

SANTIAGO PEAK QUADRANGLE
CALIFORNIA
7.5 MINUTE SERIES (TOPOGRAPHIC)
NE 1/4 SANTIAGO PEAK 15' QUADRANGLE



Mapped, edited, and published by the Geological Survey

Control by USGS and USC&GS

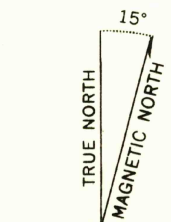
Topography from aerial photographs by multiplex methods
Aerial photographs taken 1949. Field check 1954

Polyconic projection. 1927 North American datum
10,000-foot grid based on California coordinate system, zone 6

Dashed land lines indicate approximate locations
Dotted land lines were established by private survey

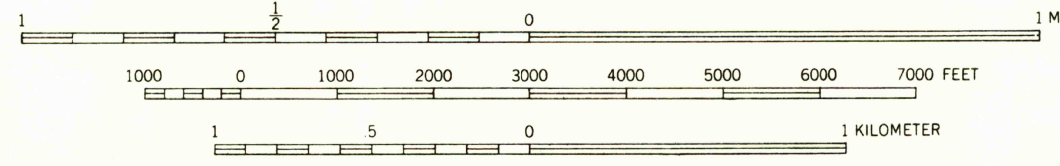
Unchecked elevations are shown in brown

1000-meter Universal Transverse Mercator grid ticks,
zone 11, shown in blue



APPROXIMATE MEAN
DECLINATION, 1954

SCALE 1:24000



CONTOUR INTERVAL 40 FEET
DATUM IS MEAN SEA LEVEL

THIS MAP COMPLIES WITH NATIONAL MAP ACCURACY STANDARDS
FOR SALE BY U. S. GEOLOGICAL SURVEY, DENVER 25, COLORADO OR WASHINGTON 25, D. C.
A FOLDER DESCRIBING TOPOGRAPHIC MAPS AND SYMBOLS IS AVAILABLE ON REQUEST

USGS
Historical File
Topographic Division



QUADRANGLE LOCATION

ROAD CLASSIFICATION
Medium-duty ——— Light-duty ———
Unimproved dirt ———

U.S.G.S.
FILE COPY
TOPOGRAPHIC DIVISION
SANTIAGO PEAK, CALIF.
NE 1/4 SANTIAGO PEAK 15' QUADRANGLE
N 3337.5 - W 11730.7.5

1954