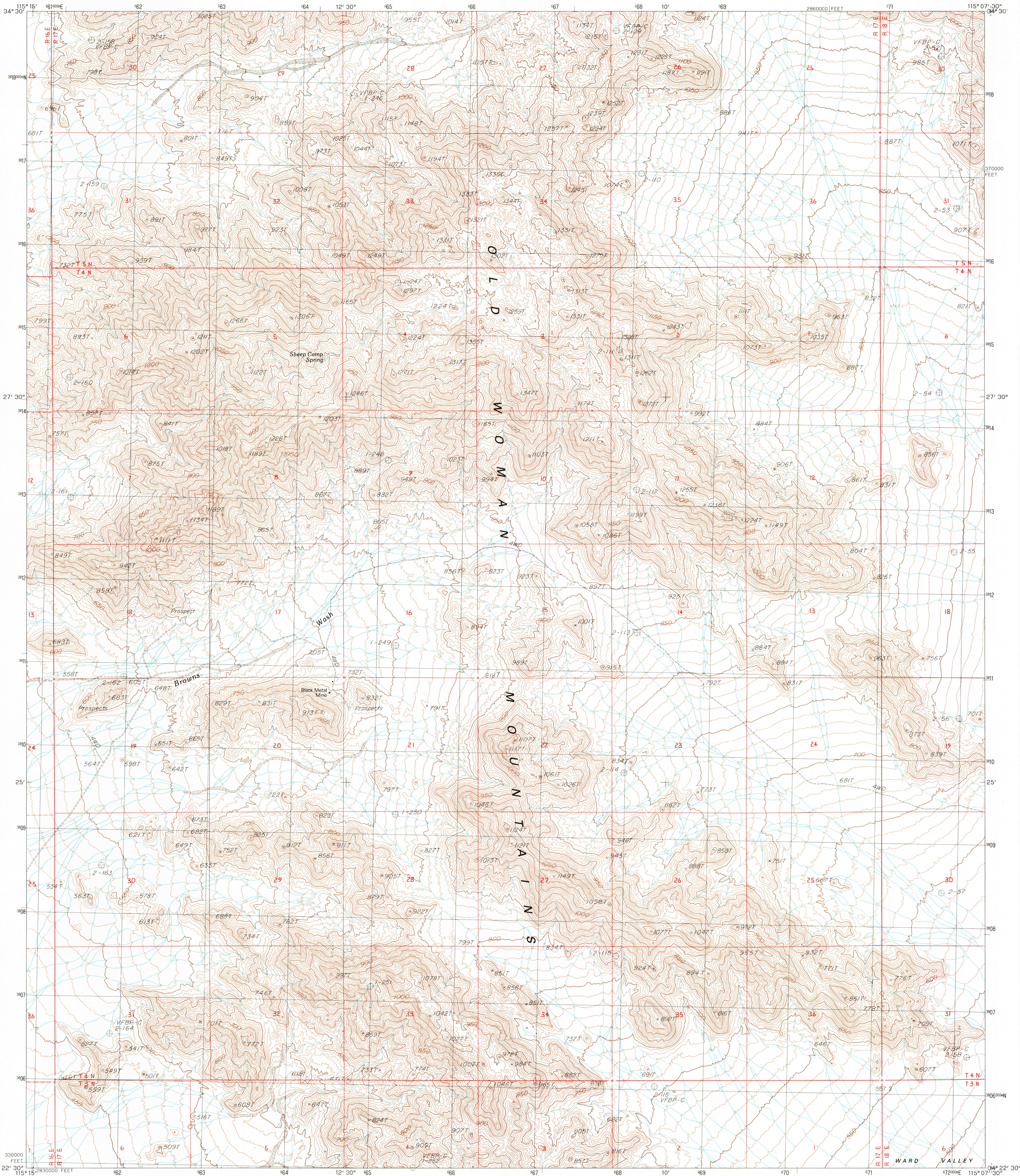


UNITED STATES
DEPARTMENT OF THE INTERIOR
GEOLOGICAL SURVEY

SHEEP CAMP SPRING QUADRANGLE
CALIFORNIA—SAN BERNARDINO CO.
7.5 MINUTE SERIES (TOPOGRAPHIC)



PRODUCED BY THE UNITED STATES GEOLOGICAL SURVEY
CONTROL BY USGS, NOS/NOAA
FIELD CHECKED 1981
PROJECTION UNIVERSAL TRANSVERSE MERCATOR
GRID: 1000-METER UNIVERSAL TRANSVERSE MERCATOR ZONE 11
10,000-FOOT STATE GRID TICKS CALIFORNIA ZONE 5
UTM GRID DECLINATION 1°02' EAST
1980 MAGNETIC NORTH DECLINATION 14° EAST
VERTICAL DATUM NATIONAL GEODETIC VERTICAL DATUM OF 1929
HORIZONTAL DATUM 1927 NORTH AMERICAN DATUM
To place on the predicted North American Datum of 1983,
move the projection lines as shown by dashed corner ticks
(1 meter north / 75 meters east)
There may be private inholdings within the boundaries of any
Federal and State Reservations shown on this map
No distinction made between houses, barns, and other buildings

PROVISIONAL MAP
Produced from original
manuscript drawings. Infor-
mation shown as of date of
photography.

SCALE 1:24 000
1 5 0 5 10 15 20 25 30 35 40 45 50 55 60 65 70 75 80 85 90 95 100
KILOMETERS
1 5 0 5 10 15 20 25 30 35 40 45 50 55 60 65 70 75 80 85 90 95 100
MILES
1000 0 1000 2000 3000 4000 5000 6000 7000 8000 9000 10 000
FEET
CONTOUR INTERVAL 10 METERS
CONTROL ELEVATIONS SHOWN TO THE NEAREST 0.1 METER
OTHER ELEVATIONS SHOWN TO THE NEAREST METER
To convert meters to feet multiply by 3.2808
To convert feet to meters multiply by 0.3048
THIS MAP COMPLIES WITH NATIONAL MAP ACCURACY STANDARDS
FOR SALE BY U. S. GEOLOGICAL SURVEY, DENVER, COLORADO 80225, OR RESTON, VIRGINIA 22092

1	2	3	1	Skeleton Pass
2	3	4	2	Old Woman Statue
3	4	5	3	Painted Rock Wash
4	5	6	4	Cedar Lake NE
5	6	7	5	Wilhelm Spring
6	7	8	6	Chubbuck
7	8	9	7	Milligan
8	9	10	8	East of Milligan

ADJOINING 7.5 QUADRANGLE NAMES

CONTOURS AND ELEVATIONS IN METERS
ROAD LEGEND
Improved Road
Unimproved Road
Trail
Interstate Route U.S. Route State Route
SHEEP CAMP SPRING, CALIF.
PROVISIONAL EDITION 1985
34115-D2-TM-024