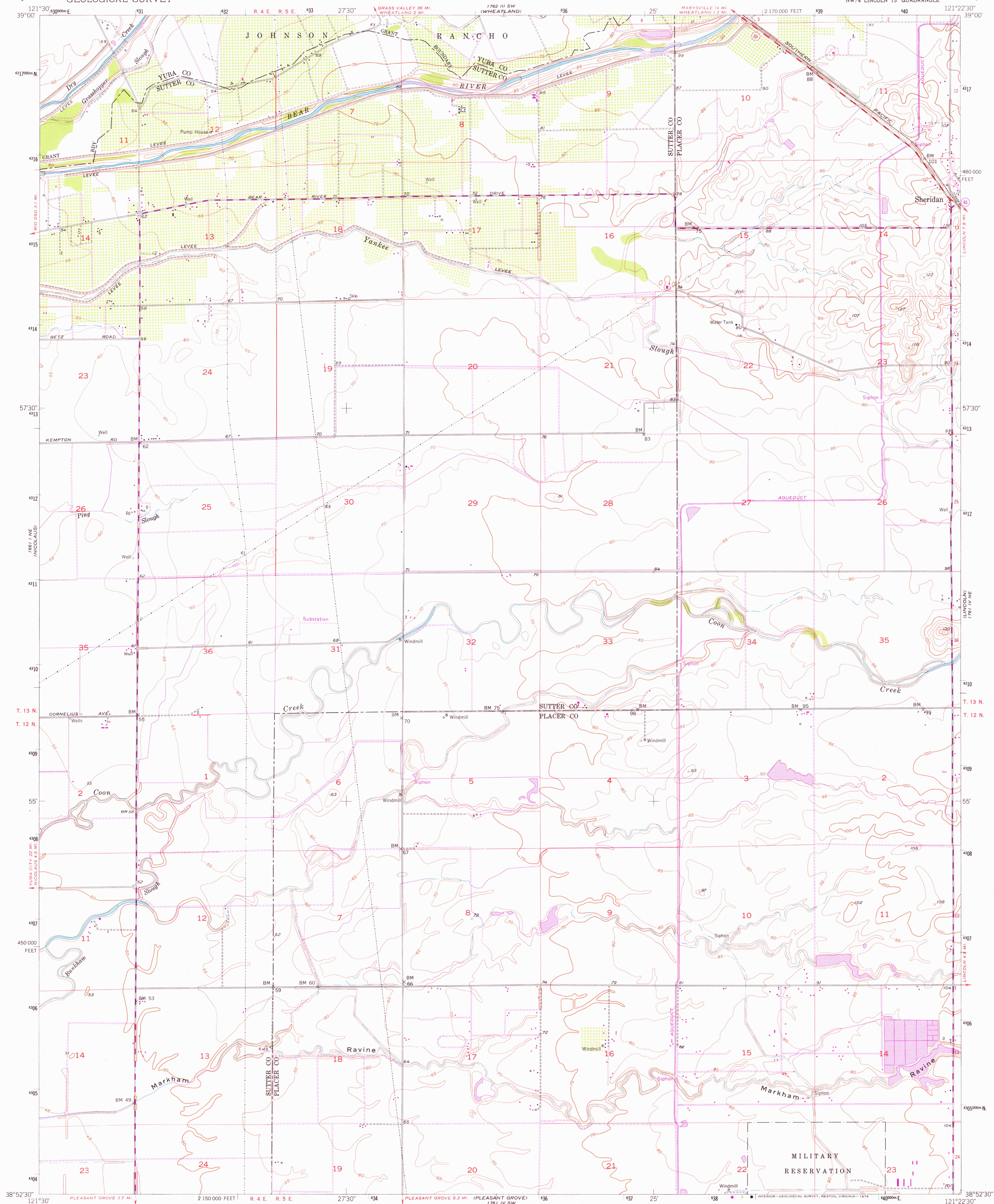


UNITED STATES  
DEPARTMENT OF THE INTERIOR  
GEOLOGICAL SURVEY

SHERIDAN QUADRANGLE  
CALIFORNIA  
7.5 MINUTE SERIES (TOPOGRAPHIC)  
NW/4 LINCOLN 15' QUADRANGLE



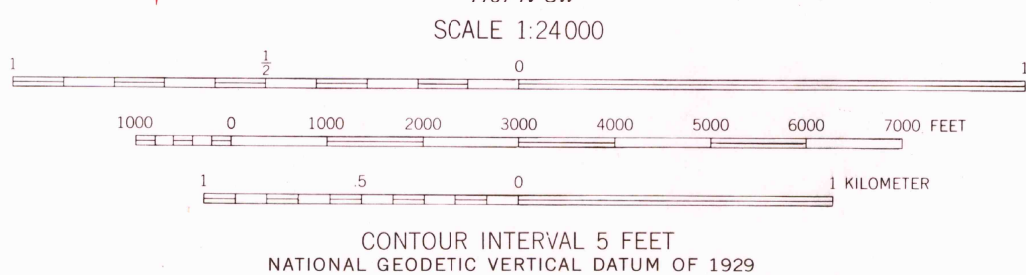
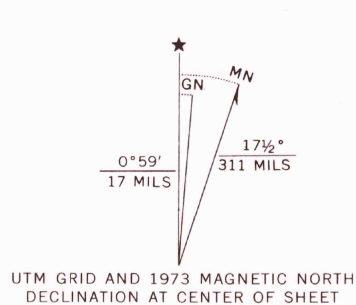
Mapped, edited, and published by the Geological Survey

Control by USGS and USC&GS

Culture and drainage compiled from aerial photographs  
taken 1949. Topography by plane-table surveys 1953

Polycyclic projection. 1927 North American datum  
10,000-foot grid based on California coordinate system, zone 2  
1000-meter Universal Transverse Mercator grid ticks,  
zone 10, shown in blue

Revisions shown in purple compiled from aerial photographs  
taken 1973. This information not field checked



THIS MAP COMPLIES WITH NATIONAL MAP ACCURACY STANDARDS  
FOR SALE BY U.S. GEOLOGICAL SURVEY, DENVER, COLORADO 80225, OR RESTON, VIRGINIA 22092  
A FOLDER DESCRIBING TOPOGRAPHIC MAPS AND SYMBOLS IS AVAILABLE ON REQUEST



ROAD CLASSIFICATION  
Heavy-duty 4 LANE 6 LANE Light-duty  
Medium-duty 4 LANE 6 LANE Unimproved dirt  
U.S. Route State Route

USGS  
HISTORICAL FILE  
TOPOGRAPHIC DIVISION

SHERIDAN, CALIF.  
NW/4 LINCOLN 15' QUADRANGLE  
N3852.5-W12122.5/7.5

1953  
PHOTOREVISED 1973  
AMS 1761 IV NW-SERIES V895

MAR 0 1 1976