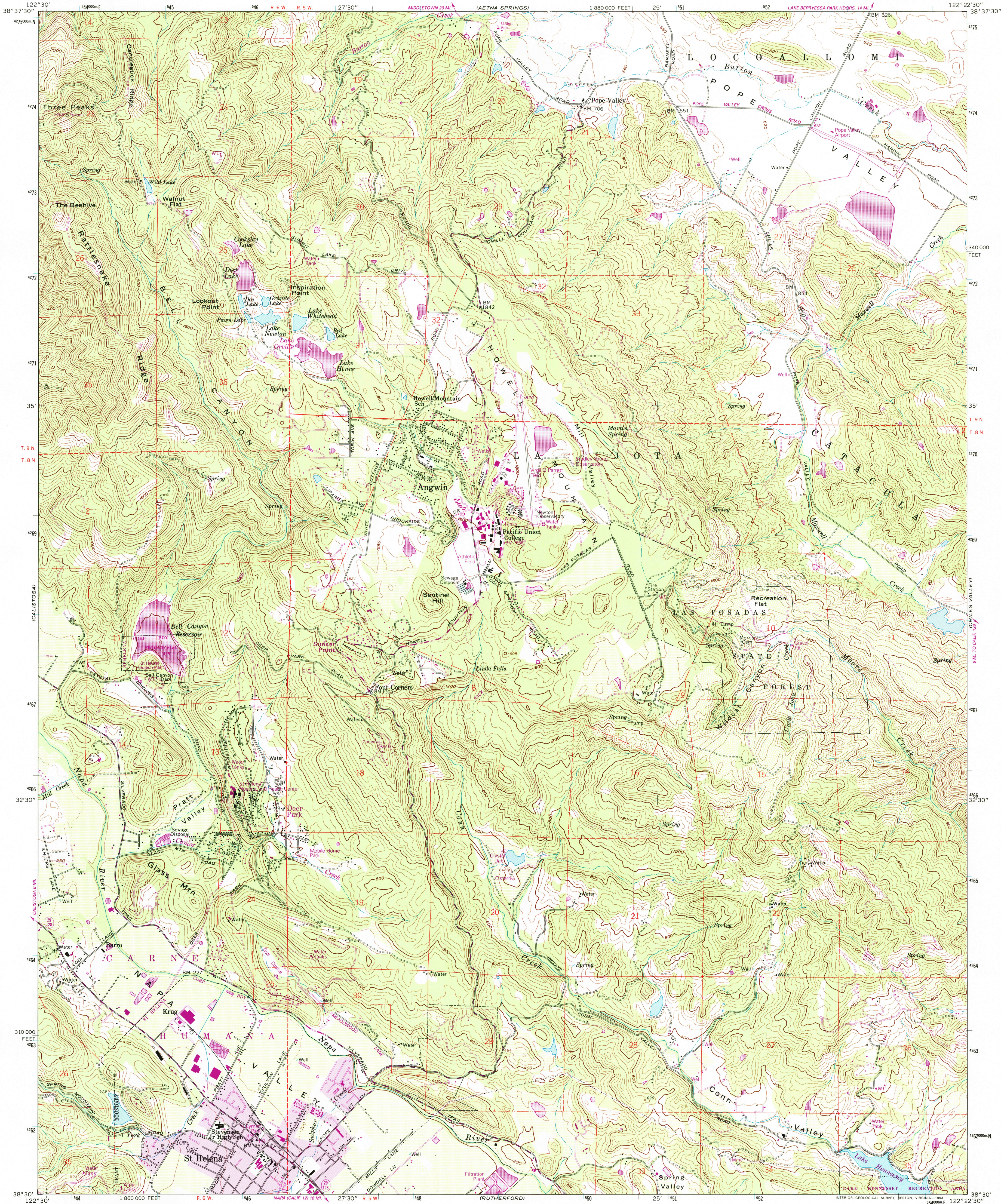


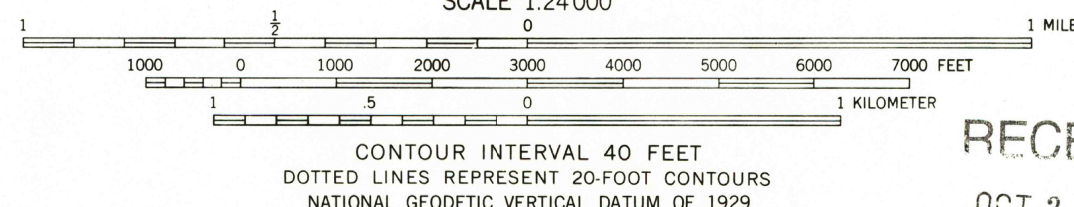
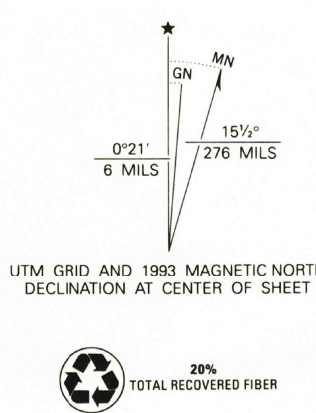


U.S. DEPARTMENT OF THE INTERIOR
U.S. GEOLOGICAL SURVEY

ST. HELENA QUADRANGLE
CALIFORNIA-NAPA CO.
7.5 MINUTE SERIES (TOPOGRAPHIC)



Produced by the United States Geological Survey
in cooperation with California Department of
Water Resources
Control by USGS and NOS/NOAA
Compiled from aerial photographs taken 1957. Information shown
in purple has been updated from aerial photographs taken 1987 and
field checked. Map edited 1993. Conflicts may exist between
some updated features and previously mapped contours
North American Datum of 1927 (NAD 27). Projection and
10000-foot grid ticks: California Coordinate System, zone 2
(Lambert Conformal Conic). 1000-meter Universal Transverse
Mercator grid ticks, zone 10, shown in blue
The difference between NAD 27 and North American Datum of
1983 (NAD 83) for 7.5 minute intersections is given in USGS
Bulletin 1875. The NAD 83 is shown by dashed corner ticks
There may be private inholdings within the boundaries of the
National or State reservations shown on this map
Purple tint indicates areas in which only landmark buildings are shown



RECEIVED
OCT 3 1 2001
HISTORICAL MAP ARCHIVES



ROAD CLASSIFICATION
Medium-duty ——— Light-duty ———
Unimproved dirt ———
State Route ———
RECEIVED
OCT 3 1 2001
HISTORICAL MAP ARCHIVES

ST. HELENA, CALIF.
38122-EA-TF-024
1960
REVISED 1993
DMA 1561 III SW-SERIES V895

