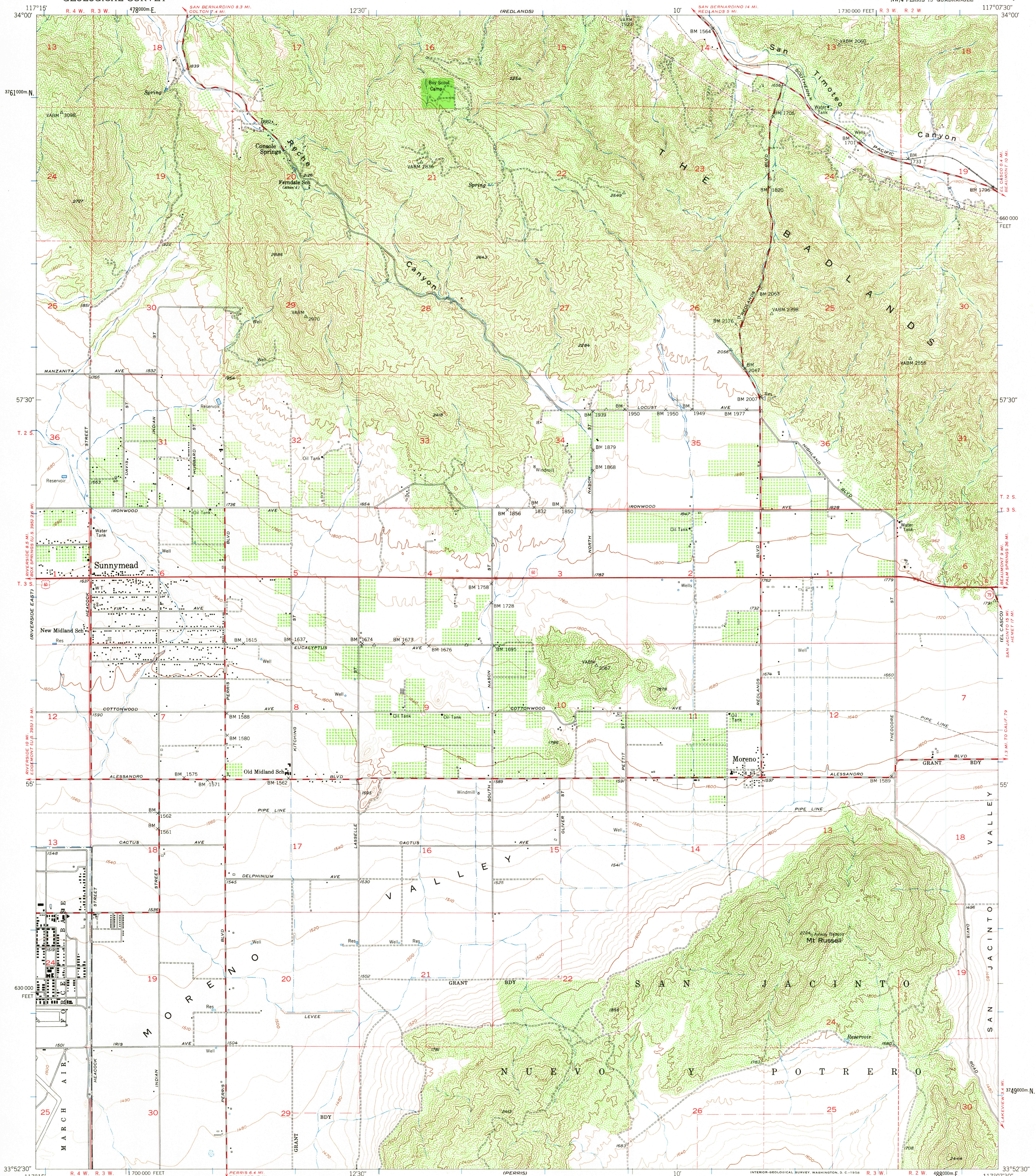


UNITED STATES
DEPARTMENT OF THE INTERIOR
GEOLOGICAL SURVEY

SUNNYMEAD QUADRANGLE
CALIFORNIA—RIVERSIDE CO.
7.5 MINUTE SERIES (TOPOGRAPHIC)
NW/4 PERRIS 15' QUADRANGLE



Mapped, edited, and published by the Geological Survey
Control by USC&GS and USCE
Topography from aerial photographs by multiplex methods
and by plane-table surveys 1953. Aerial photographs taken 1951
Polyconic projection. 1927 North American datum
10,000-foot grid based on California coordinate system, zone 6
Dashed land lines indicate approximate locations
Unchecked elevations are shown in brown
1000-meter Universal Transverse Mercator grid ticks,
zone 11, shown in blue

APPROXIMATE MEAN
DECLINATION, 1953

SCALE 1:24,000
1 0 1000 2000 3000 4000 5000 6000 7000 FEET
1 5 0 1 KILOMETER
CONTOUR INTERVAL 40 FEET
DOTTED LINES REPRESENT 10 FOOT CONTOURS
DATUM IS MEAN SEA LEVEL
THIS MAP COMPLIES WITH NATIONAL MAP ACCURACY STANDARDS
FOR SALE BY U. S. GEOLOGICAL SURVEY, DENVER 2, COLORADO OR WASHINGTON 25, D. C.
A FOLDER DESCRIBING TOPOGRAPHIC MAPS AND SYMBOLS IS AVAILABLE ON REQUEST

USGS
Historical File
Topographic Division



U.S.G.S.

U.S. GEOLOGICAL SURVEY
TOPOGRAPHIC DIVISION

ROAD CLASSIFICATION
Heavy-duty 4 LANE 6 LANE Light-duty
Medium-duty 4 LANE 6 LANE Unimproved dirt
U. S. Route State Route

SUNNYMEAD, CALIF.
NW/4 PERRIS 15' QUADRANGLE
N3352.5-W11707.5/7.5
1953

JUN 1 1957
T/O