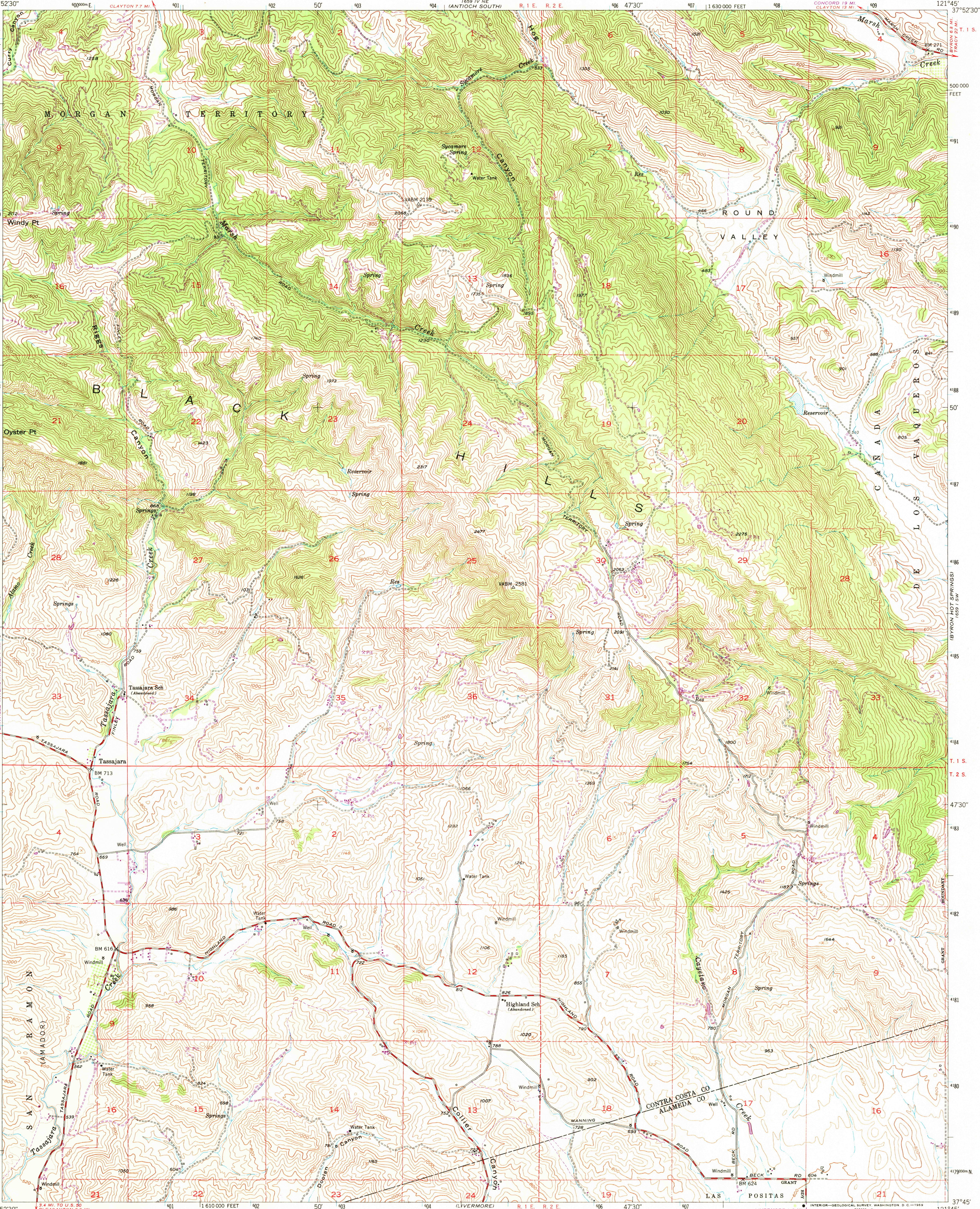




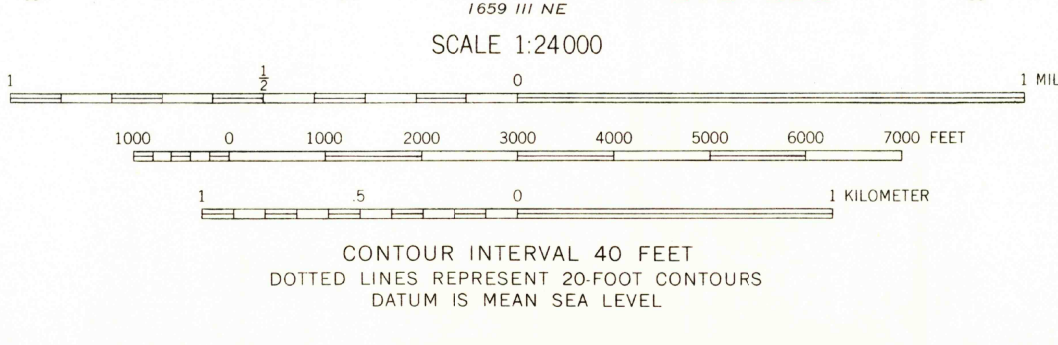
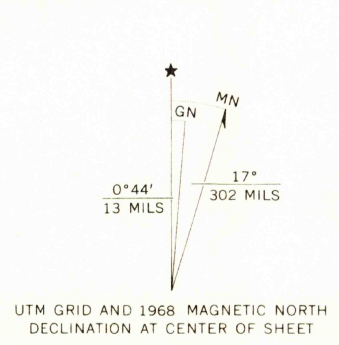
UNITED STATES  
DEPARTMENT OF THE INTERIOR  
GEOLOGICAL SURVEY

STATE OF CALIFORNIA  
DEPARTMENT OF WATER RESOURCES

TASSAJARA QUADRANGLE  
CALIFORNIA  
7.5 MINUTE SERIES (TOPOGRAPHIC)  
SE/4 MT. DIABLO 15' QUADRANGLE



Mapped, edited, and published by the Geological Survey  
Control by USGS, USC&GS, USCE, and Alameda Co.  
Topography from aerial photographs by multiplex methods  
Aerial photographs taken 1949 and 1950. Field check 1953  
Polyconic projection. 1927 North American datum  
10,000-foot grid based on California coordinate system, zone 3  
1000-meter Universal Transverse Mercator grid ticks,  
zone 10, shown in blue  
Data shown in purple compiled from aerial photographs  
taken 1968. This information not field checked



USGS  
Historical File  
Topographic Division

ROAD CLASSIFICATION  
Medium-duty ——— Light-duty ———  
Unimproved dirt ———

U.S.G.S.  
FILE COPY  
TOPOGRAPHIC DIVISION

TASSAJARA, CALIF.  
SE/4 MT. DIABLO 15' QUADRANGLE  
N3745-W12145/7.5

1963  
PHOTOGRAPHED 1948  
AMS 1659 IV SE-SERIES V895

THIS MAP COMPLIES WITH NATIONAL MAP ACCURACY STANDARDS  
FOR SALE BY U. S. GEOLOGICAL SURVEY, DENVER, COLORADO 80225, OR WASHINGTON, D. C. 20242  
A FOLDER DESCRIBING TOPOGRAPHIC MAPS AND SYMBOLS IS AVAILABLE ON REQUEST

380  
MAR 7 1969