

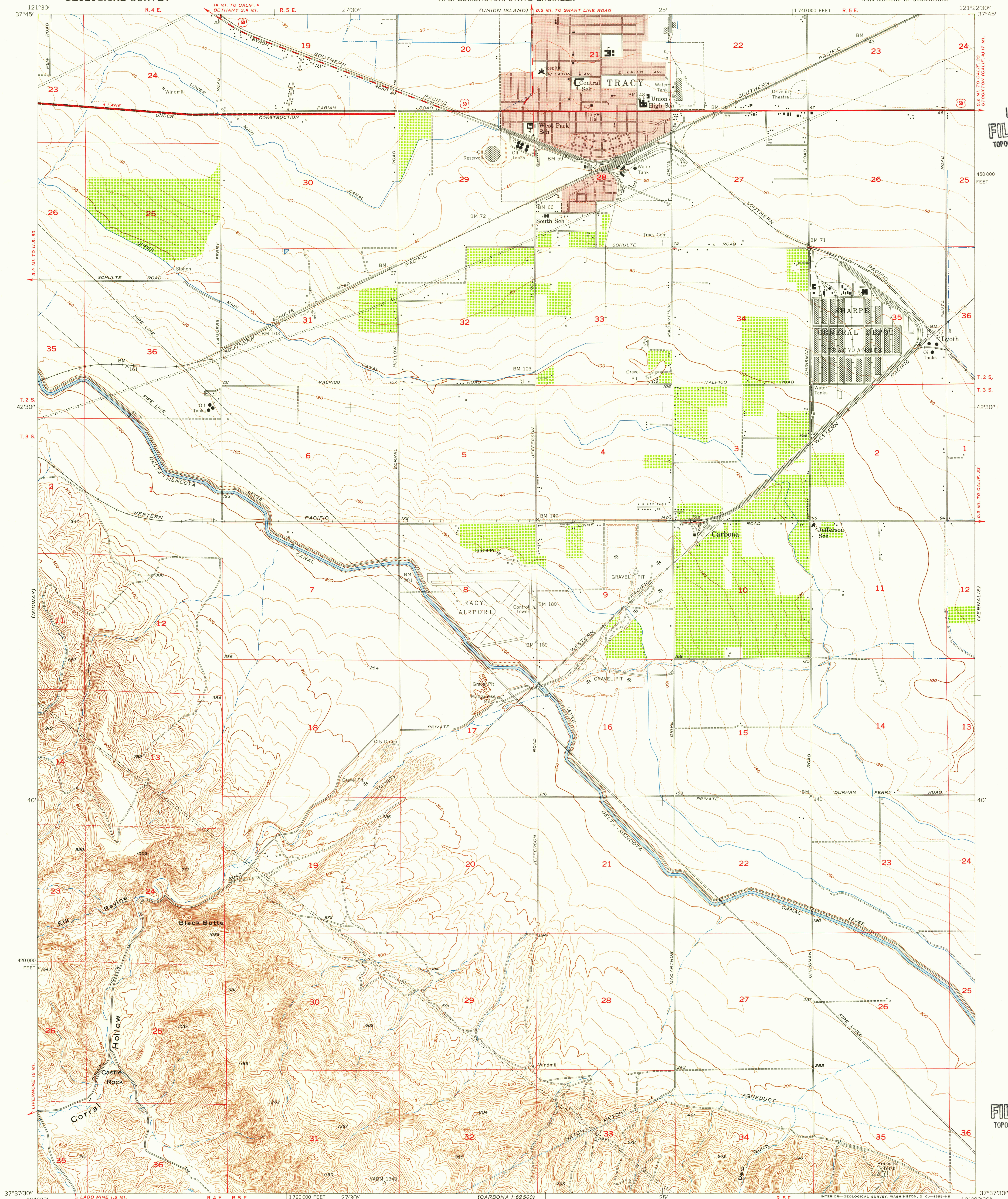
(BETHANY)

UNITED STATES
DEPARTMENT OF THE INTERIOR
GEOLOGICAL SURVEY

STATE OF CALIFORNIA
GOODWIN J. KNIGHT, GOVERNOR
FRANK B. DURKEE, DIRECTOR OF PUBLIC WORKS
A. D. EDMONSTON, STATE ENGINEER

TRACY QUADRANGLE
CALIFORNIA—SAN JOAQUIN CO.
7.5 MINUTE SERIES (TOPOGRAPHIC)
NW/4 CARBONA 15' QUADRANGLE

U.S.G.S.
FILE COPY
TOPOGRAPHIC DIVISION



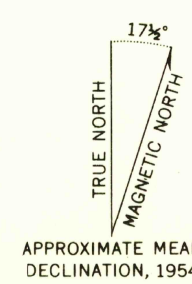
Mapped, edited, and published by the Geological Survey

Control by USGS and USC&GS

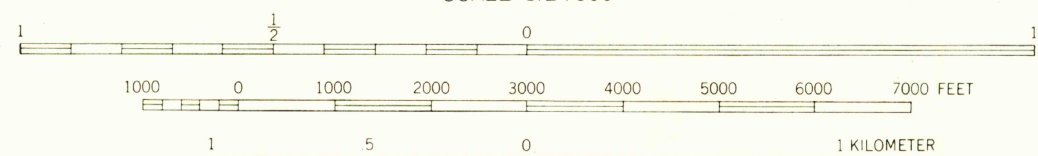
Topography from aerial photographs by Kelsch plotter methods
and by plane-table surveys 1912. Aerial photographs taken 1949
Field check 1954

Polyconic projection. 1927 North American datum
10,000-foot grid based on California coordinate system, zone 3

Red tint indicates areas in which only landmark buildings are shown
Dashed land lines indicate approximate locations



APPROXIMATE MEAN
DECLINATION, 1954



SCALE 1:24000

CONTOUR INTERVAL 20 FEET
DASHED LINES REPRESENT 5 FOOT CONTOURS
CONTOURS INCOMPLETE ALONG EMBANKMENTS AND DITCHES
DATUM IS MEAN SEA LEVEL

THIS MAP COMPLIES WITH NATIONAL MAP ACCURACY STANDARDS
FOR SALE BY U. S. GEOLOGICAL SURVEY, FEDERAL CENTER, DENVER, COLORADO OR WASHINGTON 25, D. C.
A FOLDER DESCRIBING TOPOGRAPHIC MAPS AND SYMBOLS IS AVAILABLE ON REQUEST

ROAD CLASSIFICATION

Heavy-duty ——— Light-duty ———
Medium-duty ——— Unimproved dirt ———
U. S. Route ——— State Route ———

USGS
Historical File
Topographic Division

TRACY, CALIF.
NW/4 CARBONA 15' QUADRANGLE
N 37° 37.5' W 121° 22.5' 7.5

1954

U.S.G.S.
FILE COPY
TOPOGRAPHIC DIVISION

(SOLVO)

JUL 20 1955

3563