

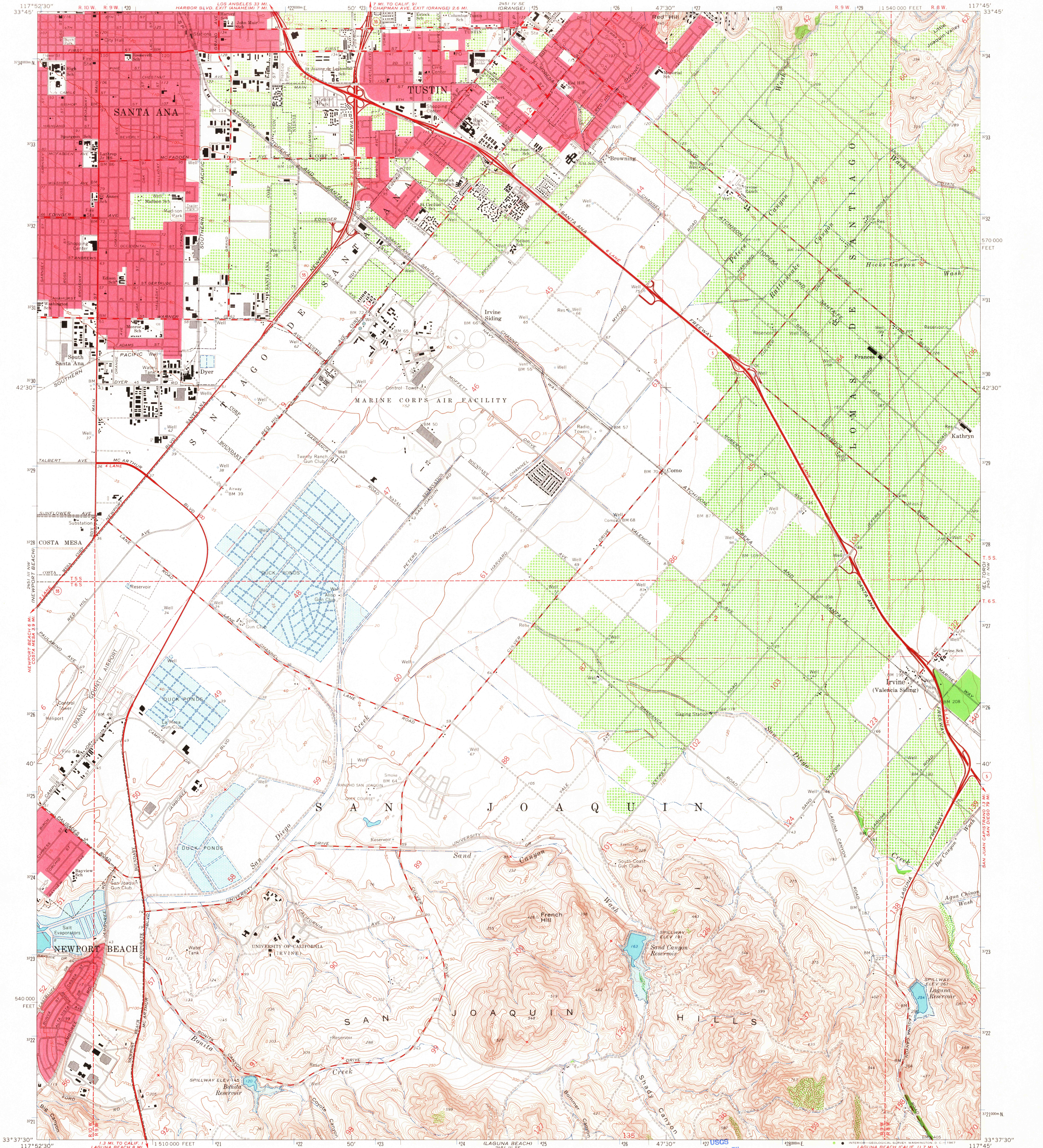
241 IV NE
2451 III NW

UNITED STATES
DEPARTMENT OF THE INTERIOR
GEOLOGICAL SURVEY

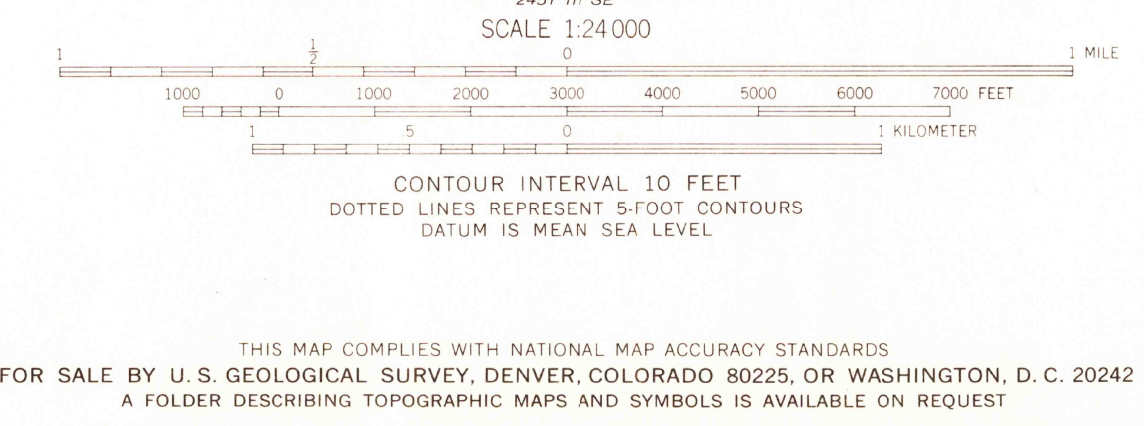
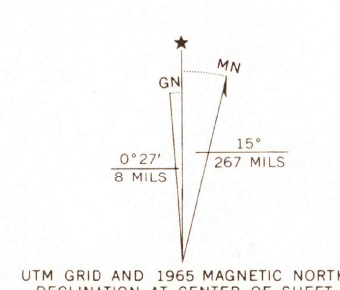
STATE OF CALIFORNIA
DEPARTMENT OF WATER RESOURCES

TUSTIN QUADRANGLE
CALIFORNIA-ORANGE CO.
7.5 MINUTE SERIES (TOPOGRAPHIC)
NE/4 SANTA ANA 15 QUADRANGLE

251 IV SE
251 I SW
BLACK STAR CANYON



Mapped, edited, and published by the Geological Survey
Control by USGS, USC&GS, and Orange County
Topography by photogrammetric methods from aerial photographs taken
1946 and planetable surveys 1932, and by the Irvine Company 1960
Revised from aerial photographs taken 1963 and planetable surveys 1965
Polyconic projection. 1927 North American datum
10,000-foot grid based on California coordinate system, zone 6
1000-meter Universal Transverse Mercator grid ticks,
zone 11, shown in blue
Red tint indicates areas in which only landmark buildings are shown
Dotted land lines established by private survey
The northwest portion of this map lies within a subsidence area
Vertical control based on latest available adjustment
Areas covered by dashed light-blue pattern
are subject to controlled inundation



USGS
Historical File
Topographic Division

ROAD CLASSIFICATION
Heavy-duty ——— Light-duty ———
Medium-duty ——— Unimproved dirt ———
Interstate Route ——— State Route ———



U.S.G.S.
TOPOGRAPHIC DIVISION

TUSTIN, CALIF.
NE/4 SANTA ANA 15 QUADRANGLE
N3337.5-W11745/7.5
1965
AMS 2451 III NE-SERIES V895

4700
W. 1. 1967