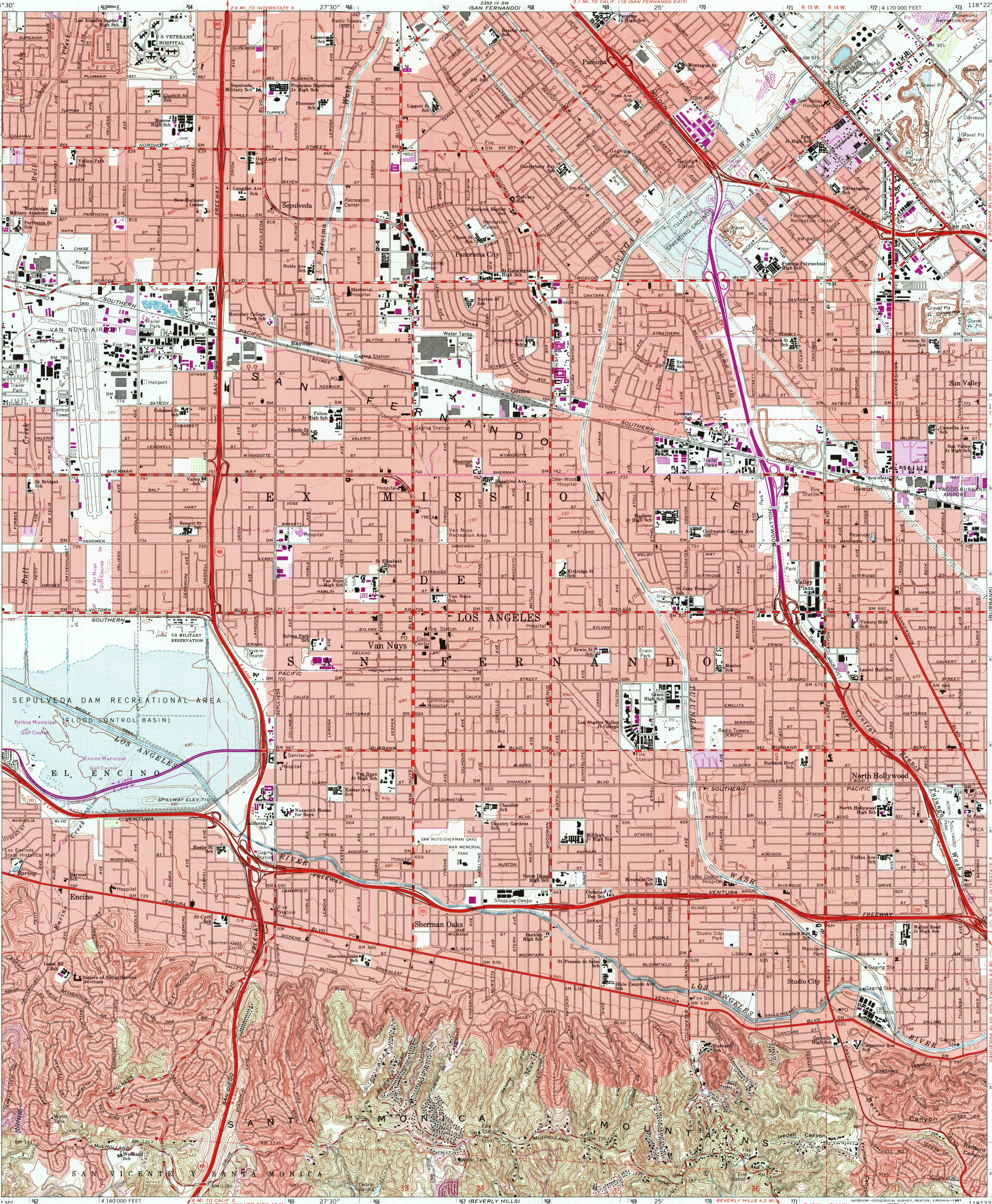


UNITED STATES  
DEPARTMENT OF THE INTERIOR  
GEOLOGICAL SURVEY

STATE OF CALIFORNIA  
DEPARTMENT OF WATER RESOURCES

VAN NUYS QUADRANGLE  
CALIFORNIA-LOS ANGELES CO.  
7.5 MINUTE SERIES (TOPOGRAPHIC)



Mapped, edited, and published by the Geological Survey  
Control by USGS, USC&GS, and Los Angeles City and County  
Topography by photogrammetric methods from aerial  
photographs taken 1964. Field checked 1966  
Supersedes map surveyed 1933, revised 1953  
Polyconic projection. 1927 North American datum  
10,000-foot grid based on California coordinate system, zone 7  
1000-meter Universal Transverse Mercator grid ticks,  
zone 11, shown in blue  
To place on the predicted North American Datum 1983  
move the projection lines 3 meters north and  
85 meters east as shown by dashed corner ticks  
Red tint indicates areas in which only landmark buildings are shown  
Areas covered by dashed light-blue pattern are subject  
to controlled inundation

SCALE 1:24,000  
1 1000 0 1000 2000 3000 4000 5000 6000 7000 FEET  
1 KILOMETER  
CONTOUR INTERVAL 20 FEET  
DOTTED LINES REPRESENT 10-FOOT CONTOURS  
NATIONAL GEODETIC VERTICAL DATUM OF 1929  
THIS MAP COMPLIES WITH NATIONAL MAP ACCURACY STANDARDS  
FOR SALE BY U. S. GEOLOGICAL SURVEY, DENVER, COLORADO 80225, OR RESTON, VIRGINIA 22092  
A FOLDER DESCRIBING TOPOGRAPHIC MAPS AND SYMBOLS IS AVAILABLE ON REQUEST

ROAD CLASSIFICATION  
Heavy-duty ——— Light-duty ———  
Medium-duty ——— Unimproved dirt ———  
Interstate Route U.S. Route State Route  
VAN NUYS, CALIF.  
34118-B4-TF-024  
1966  
PHOTOREVISED 1972  
DMA 2352 III NW-SERIES Y895