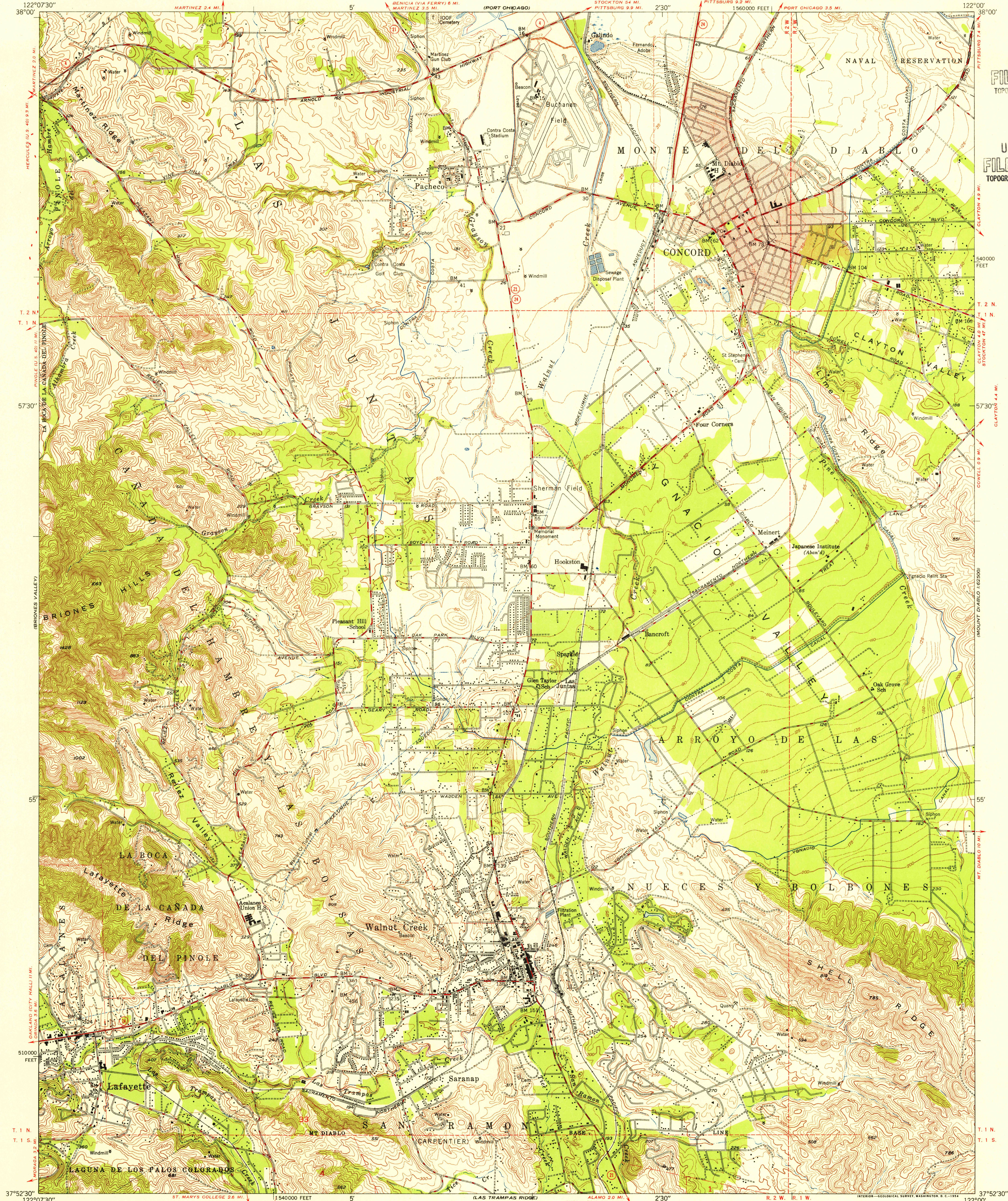
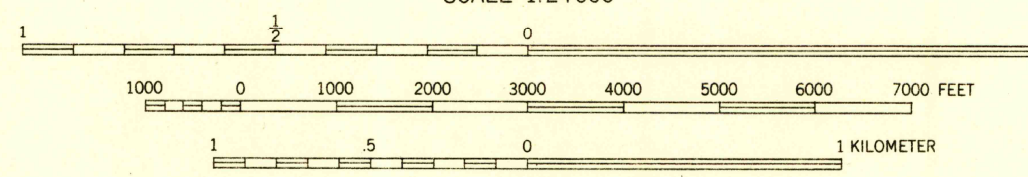
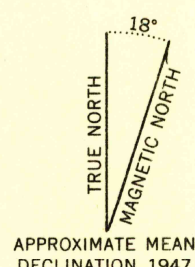


U.S.G.S.
FILE COPY
TOPOGRAPHIC

U.S.G.S.
FILE COPY
TOPOGRAPHIC DIVISION



Mapped, edited, and published by the Geological Survey
Control by USGS and USC & GS
Topography from aerial photographs by multiplex methods
Aerial photographs taken 1946. Field check 1947
Polyconic projection. 1927 North American datum
10,000-foot grid based on California coordinate system,
zone 3
Red tint indicates area in which only
landmark buildings are shown
Dashed land lines indicate approximate location



CONTOUR INTERVAL 25 FEET
DASHED LINES REPRESENT 5 FOOT CONTOURS
DATUM IS MEAN SEA LEVEL

THIS MAP COMPLIES WITH NATIONAL MAP ACCURACY STANDARDS
FOR SALE BY U. S. GEOLOGICAL SURVEY, DENVER, COLORADO OR WASHINGTON 25, D. C.

USGS
Historical File
Topographic Division

ROAD CLASSIFICATION
HARD-SURFACE ALL WEATHER ROADS DRY WEATHER ROADS
Heavy-duty 4 LANE Improved dirt 4 LANE
Medium-duty 4 LANE Unimproved dirt 4 LANE
Loose-surface, graded, or narrow hard-surface 4 LANE
U. S. Route State Route

WALNUT CREEK, CALIF.
NE4 CONCORD 15' QUADRANGLE
N3752.5-W12200.75

1947

DEC 16 1954
3215